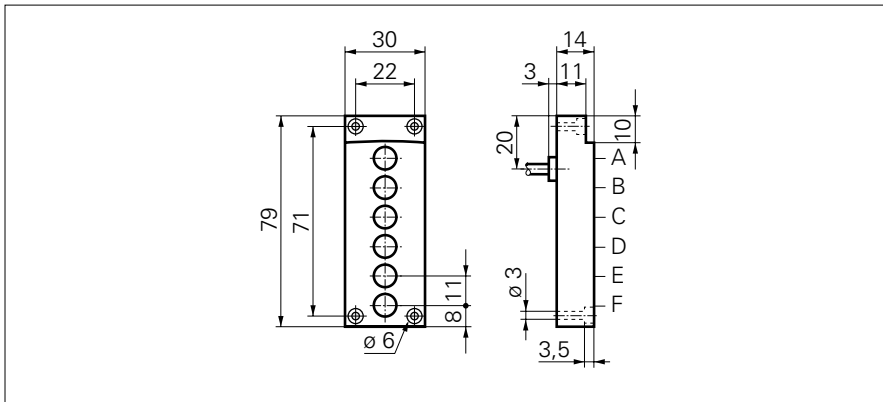


**Inductive sensors special versions**

**ILFK 12P1101/I06**

**dimension drawing**



**general data**

mounting type	non-flush
special type	inductive code reader
nominal sensing distance $S_n$	4 mm
hysteresis	1 ... 20 % of $S_r$

**electrical data**

switching frequency	< 2 kHz
voltage supply range +Vs	10 ... 30 VDC
current consumption max. (no load)	20 mA
output circuit	PNP make function (NO)
voltage drop $V_d$	< 2 VDC
output current	< 200 mA
short circuit protection	yes
reverse polarity protection	yes

**mechanical data**

type	rectangular
material (sensing face)	PA 6
housing material	PA 6
dimension	30 mm
housing length	79 mm
connection types	cable, 2 m

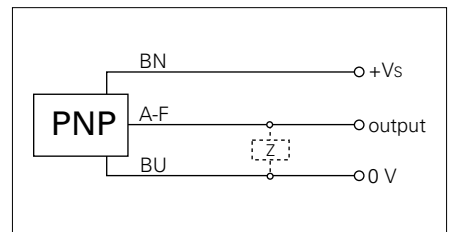
**ambient conditions**

operating temperature	0 ... +60 °C
protection class	IP 67

**photo**



**connection diagram**



- reduced wiring
- PA 6 plastic body