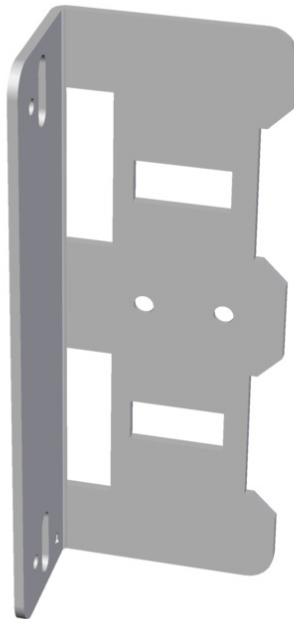


ITEM 073538 SCHALTERAUFNAHME NP

Description	Technical data	Accessories	Downloads
-------------	----------------	-------------	-----------



Features

- › Switch bracket made of steel
- › For doors hinged on the left or right

Advantages

- › Robust construction
- › Easily fitted to standard aluminum profiles and machine covers by screw connection
- › Symmetrical design for doors hinged on the right or left

Notes

- › Switch bracket **NP** is only suitable for series **NP...AS**

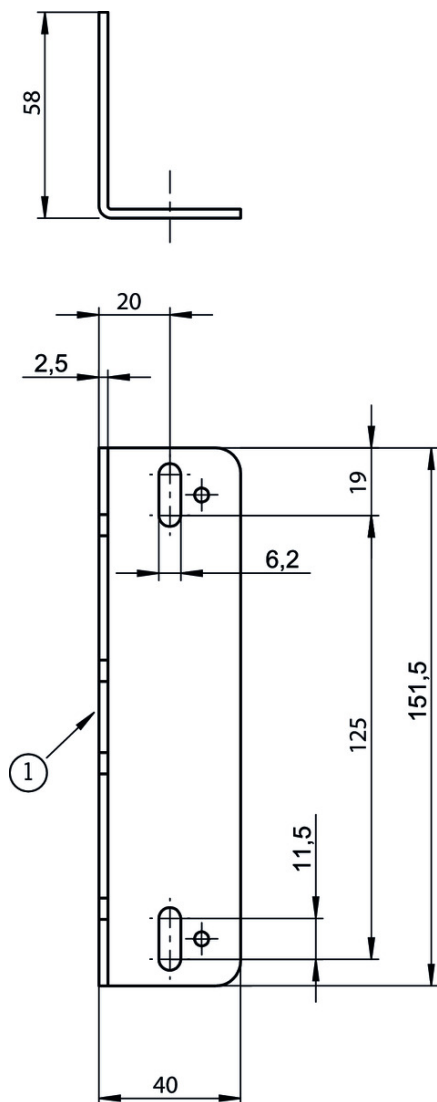
Mechanical values and environment

Material	Galvanized steel
----------	------------------

Weight

Net 0,25 kg

Dimension drawing















Legende

1 Type label

Catalogs

- ✓ Bezpečnostní spínače s plastovým pouzdrém Sicherheitsschalter mit Kunststoffgehäuse Safety Switches with Plastic Housing Interruptores de seguridad con carcasa plástica Interrupteurs de sécurité avec boîtier plastique 塑料壳体 的安全开关

	Doc. no.	Version	Language	Download
Sicherheitsschalter mit Kunststoffgehäuse	096955	11-03/18		 6.6 MB
Interrupteurs de sécurité avec boîtier plastique	100677	11-03/18		 6.6 MB
Interruptores de seguridad con carcasa plástica	104855	11-03/18		 6.6 MB
Bezpečnostní spínače s plastovým pouzdem	121649	11-03/18		 6.6 MB
Safety Switches with Plastic Housing	096956	11-03/18		 6.6 MB
塑料壳体 的安全开关	116243	11-03/18		 6.2 MB