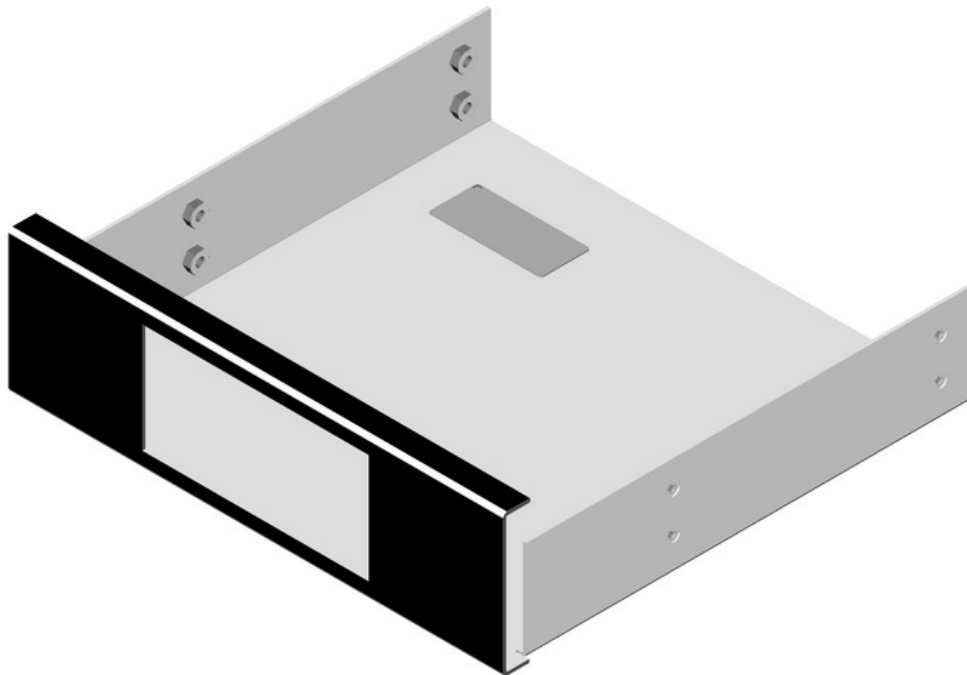


## ITEM 093615 EKS PC-MOUNTING FRAME

Description	Technical data	Accessories	Downloads
-------------	----------------	-------------	-----------



### Features

- › PC mounting frame for 5.25" drive bay
- › For installing the EKS Electronic-Key adapter in a PC
- › Front signal black matt RAL 9004
- › Including 4 fixing screws
- › An optional connection cable is available for the connection from the USB Electronic-Key adapter to the internal USB connection on the motherboard

### Approvals



### Mechanical values and environment

Material	Steel sheet
Mounting cut-out according to DIN 43700	33x68 mm

Drive bay

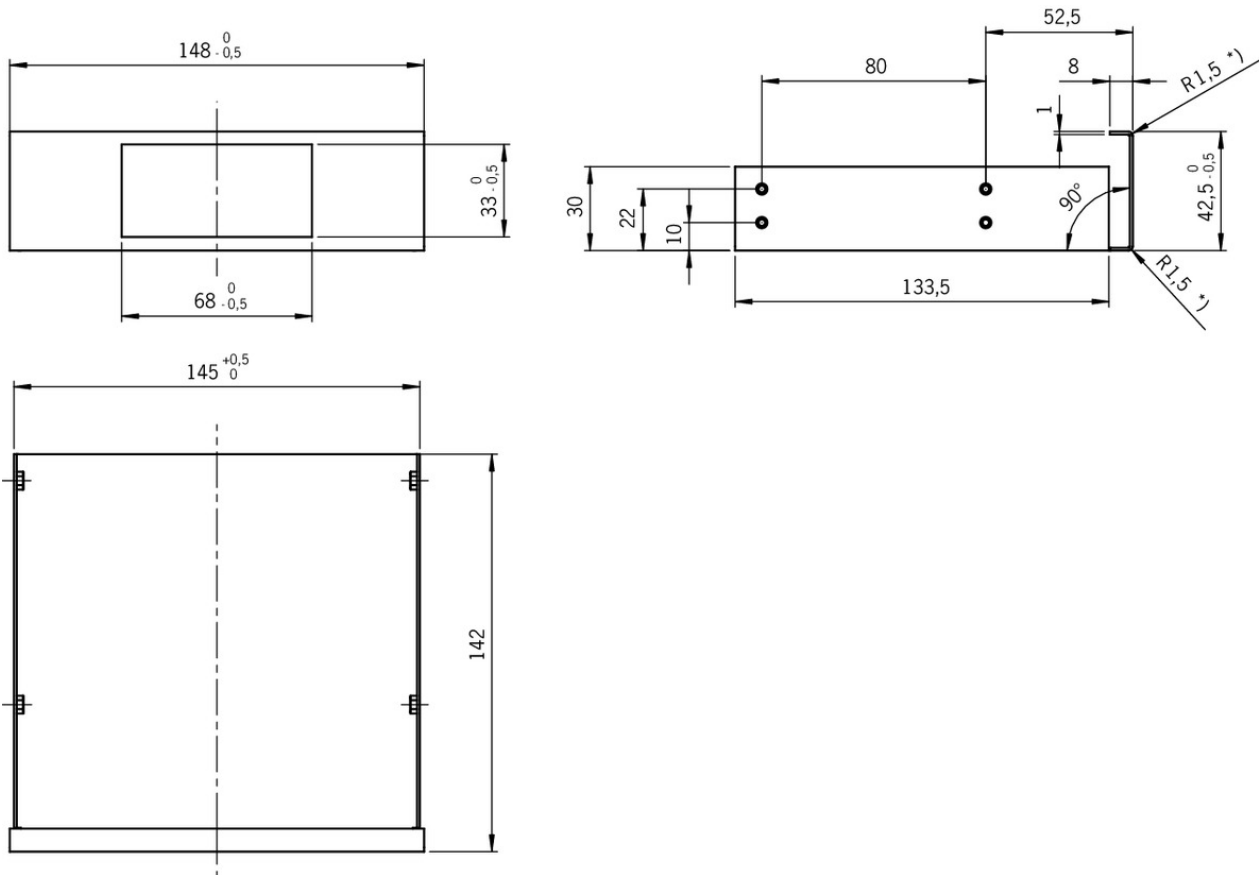
5,25 in

## Miscellaneous

Color

On the front Signal black mat

## Dimension drawing



## Connection material

- ✓ Connection cable with USB type B to female plug, 5-pin











**095633** EKS USB - PC INTERN

### ✓ Features

- › USB 2.0 cable type B to tab connector, 4-core
- › Straight plug connector
- › Cable length 0.8 m
- › Double-screened cable

## Catalogs

▼ Electronic-Key-System EKS Electronic-Key-System EKS Electronic-Key-System EKS Electronic-Key-System EKS

	<b>Doc. no.</b>	<b>Version</b>	<b>Language</b>	<b>Download</b>
Electronic-Key-System EKS	086808	14-04/17		 3.2 MB
Electronic-Key-System EKS	092953	14-04/17		 3.2 MB
Electronic-Key-System EKS	114432	14-04/17		 3.2 MB
Electronic-Key-System EKS	086809	14-04/17		 3.2 MB