

ITEM 087640 SN02K08-552-MC784

Description	Technical data	Accessories	Downloads
-------------	----------------	-------------	-----------



Features

- › plunger spacing 8mm
- › Upright housing, without flange
- › Degree of protection IP67 according to IEC 60529

Switching elements

- ES** Snap-action switching contact 1 changeover contact standard
- 552** switching element
- ES** Snap-action switching contact 1 changeover contact suitable for
- 614** switching low currents

Approvals



Mechanical values and environment

Design	Upright
Housing material	Die-cast aluminum, anodized
Weight	
Net	0,14 kg
Ambient temperature	-5 ... 80 °C
Degree of protection	IP67
Mechanical life	10 x 10 ⁶
Contact material	Silver alloy, gold flashed
Switching principle	Snap-action switching contact
Plunger spacing	8 mm
Installation position	Any
Tightening torque	
Screw terminal switching element	Hexagon socket AF 1.3 mm max. 0,2 Nm
Number of switching elements	2
Number of changeover contacts	2
Connection	2 x M16 x 1.5
Approach speed	0,01 ... 8 m/min [1]
Actuating element	Ball plunger
Actuating force	min. 15 N
Operating point	12,4 ... 12,5 12,6 [2]
Operating point accuracy	± 0.03 [3]

Electrical connection ratings

Rated thermal current I _{th}	6 A
Utilization category according to EN 60947-5-1	
AC-15	2A 230V
DC-13	2A 24V
Short circuit protection according to IEC 60269-1	
(Fuse)	6A gG
Rated insulation voltage U _i	250 V
Rated impulse withstand voltage U _{imp}	2,5 kV
Switching current	
Min. at DC 24V	min. 10 mA
Connection cross-section	0,14 ... 1,0 mm ²

Miscellaneous

C number	
C784	[4]

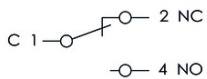
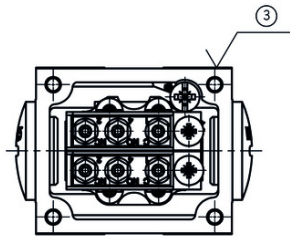
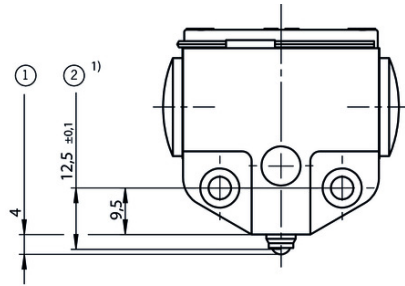
[1] The approach speed specified applies in conjunction with EUCHNER trip dogs in accordance with DIN 69639.

[2] Operating point is stated from the middle of the mounting hole.

[3] The reproducible switching point accuracy refers to the axial travel of the plunger after the switching element ES 552 has been run-in with approx. 2000 operating cycles.

[4] Operating point 12.5 ± 0.1 is stated from the middle of the mounting hole. Mounting surface is marked. Two screw plugs.

Dimension drawing



Legende

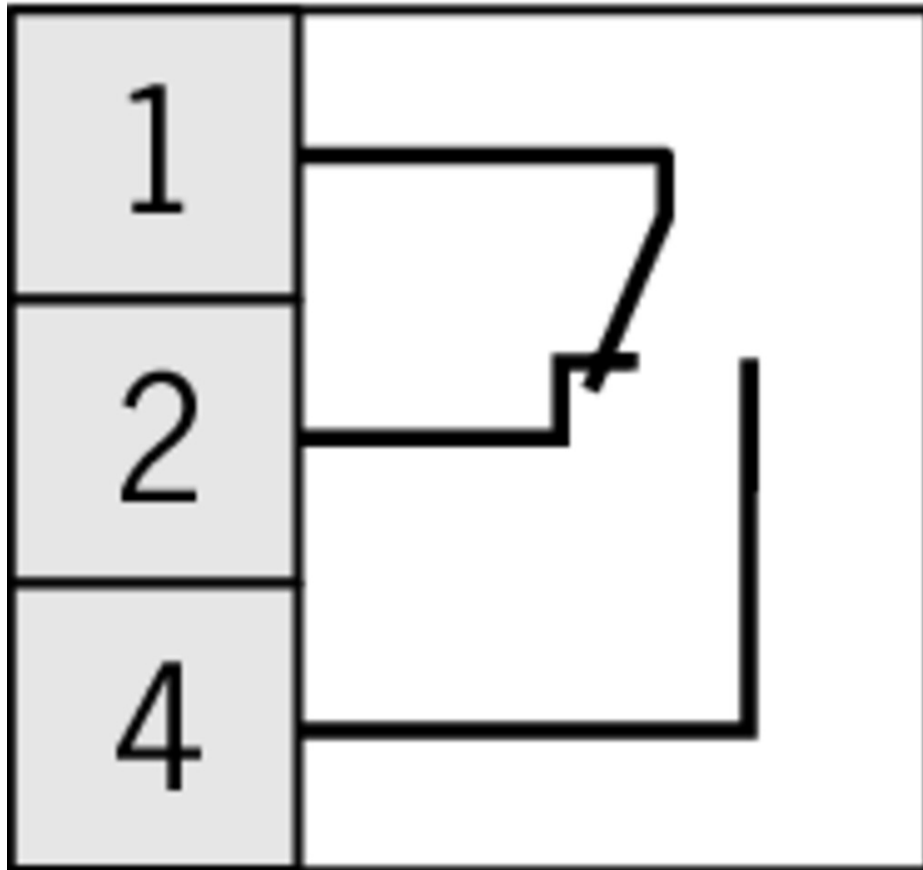
1 Max. free position

2 Operating point

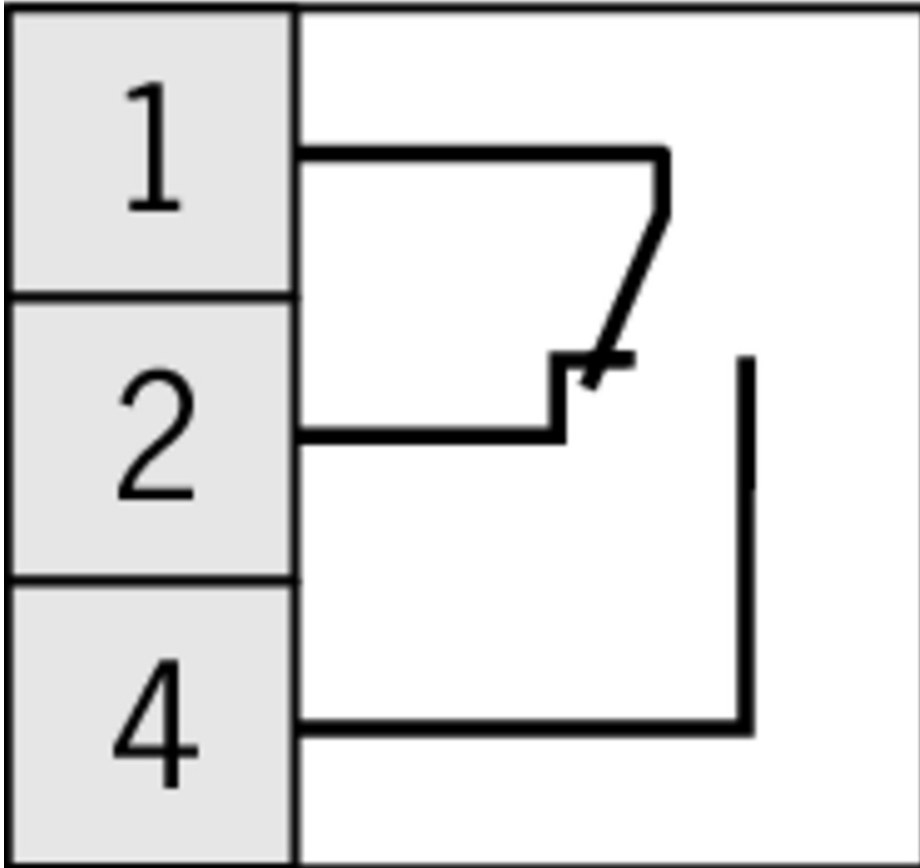
3 Mounting surface

1) Operating points must be adjusted from the mounting surface.

ES 552







ES 614



Instructions

Betriebsanleitung Präzisions-Reihengrenztaster GL, GS, SB, SN 8 mm

	Doc. no.	Version	Language	Download
Betriebsanleitung Präzisions-Reihengrenztaster GL, GS, SB, SN 8 mm	2076050	05-01/18		 0.6 MB
Mode d'emploi Boîtiers multipistes de précision GL, GS, SB, SN 8 mm				
Istruzioni di impiego Finecorsa multipli di precisione GL, GS, SB, SN 8 mm				
Operating Instructions Precision Multiple Limit Switches GL, GS, SB, SN 8 mm			