

AP000042

ACCESSORIES • MOUNTING



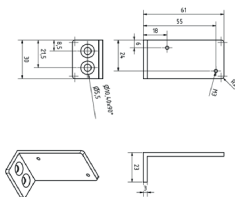
MECHANICAL DATA

Angle	90 °
Diameter/width of the fastening holes for sensor	2.5 mm
Diameter/width of the fastening holes for sensor	5.5 mm
Height	61 mm
Length	23 mm
Material	Stainless steel 1.4301
Mounting type	Screw
Number of boreholes	4
Thread pitch	0.5 mm
Thread size, metric	3
Version	Mounting angle bracket
Weight	0.05 kg
Width	30 mm

OTHER DATA

Scope of delivery	Angle
-------------------	-------

DIMENSIONAL DRAWING



INSTALLATION



Mounting / Installation may only be carried out by a qualified electrician!

DISPOSAL



SAFETY WARNINGS

Before initial operation, please make sure to follow all safety instructions that may be provided in the product information!