

Datasheet - BN 32-01

Magnetic reed switch / BN 32



- Non-contact principle
- 1 Reed kontakts
- Long life
- Actuating surface and direction of actuation marked by switch symbol
- 85 mm x 26 mm x 24 mm
- Thermoplastic enclosure
- Actuating distance up to 55 mm depending on actuating magnet and version
- Spade connector

(Minor differences between the printed image and the original product may exist!)


Ordering details

Product type description	BN 32-01
Article number	101057229
EAN Code	4030661025148
eCl@ss	27-27-01-04

Approval

Approval	-
----------	---

Global Properties

Permanent light	BN 32
Standards	-
Compliance with the Directives (Y/N) 	Yes
suitable for elevators (Y/N)	No
Active principle	Magnetic drive
Materials	
- Material of the housings	Plastic, glass-fibre reinforced thermoplastic
- Material of the active surface	Plastic
Housing construction form	Block
Weight	58
Recommended actuator	BP 10, 2 x BP 10, BP 15, 2 x BP 15, 2 x BP 15/2, BP 34, BP 20, BP 31, BP 11, BP 12, BP 21, BE 20

Mechanical data

Design of electrical connection	Flat plug-in connector 4.8 mm
Mechanical life	1.000.000.000 operations
Electrical lifetime	1.000.000 ... 1.000.000.000 operations
Switching frequency	300/
Actuating planes	Actuation from side

Active area	lateral
Switch distance	5 ... 40 BP 10 = 5 mm 2 x BP 10 = 12 mm BP 15 = 6 mm 2 x BP 15 = 12 mm 2 x BP 15/2 = 12mm BP 34 = 15 mm BP 20 = 15 mm BP 31 = 15 mm BP 11 = 5 ... 15 mm BP 12 = 10 ... 25 mm BP 21 = 20 ... 40 mm BE 20 = 15 mm
- notice	Actuating distance up to 40 mm depending on actuating magnet and version
Type of actuation	Magnet
restistance to shock	-
resistant to vibration	15 g, on sine wave oscillation
Bounce duration	0,3 ... 0,6
Latching (Y/N)	No
Actuating speed	18
Switching point accuracy	± 0,25 mm

Ambient conditions

Ambient temperature	
- Min. environmental temperature	-25
- Max. environmental temperature	+90
Protection class	IP67

Electrical data

Design of control element	Opener (NC)
Number of shutters	0
Number of openers	1
Switching time - Close	-
Switching time - Open	0,5
Voltage type	
Dielectric strength	> 600 (50)
Switching voltage	250
Switching current	3 A
Switching capacity	120 /

Outputs

Design of control output	Reed kontakts
--------------------------	---------------

LED switching conditions display

LED switching conditions display (Y/N)	No
--	----

ATEX

Explosion protection categories for gases	None
Explosion protected category for dusts	None

Dimensions

Dimensions of the sensor

- Width of sensor	85
- Height of sensor	26
- Length of sensor	24

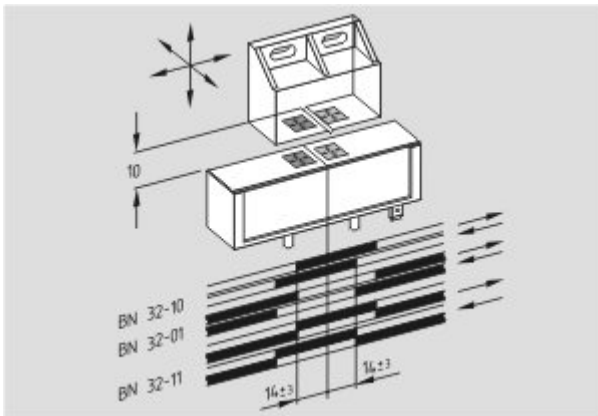
notice

The opening and closing functions depend on the direction of actuation, the actuating magnets and the polarity of the actuating magnets.




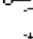

Included in delivery

Actuators must be ordered separately.

Diagram



Note Diagram

-  positive break NC contact
-  active
-  no active
-  Normally-open contact
-  Normally-closed contact

Documents

Declaration of conformity (en) 186 kB, 12.07.2018

Code: __bn_p01_en

Declaration of conformity (de) 102 kB, 08.06.2016

Code: __bn_p01

notice - Switch distance (de) 36 kB, 07.08.2009

Code: s_bnbsp01

notice - Switch distance (nl) 39 kB, 07.08.2009

Code: s_bnbsp04

notice - Switch distance (en) 42 kB, 07.08.2009

Code: s_bnbsp02

notice - Switch distance (fr) 41 kB, 07.08.2009

Code: s_bnbsp03

notice - Switch distance (pt) 39 kB, 07.08.2009

Code: s_bnbsp10

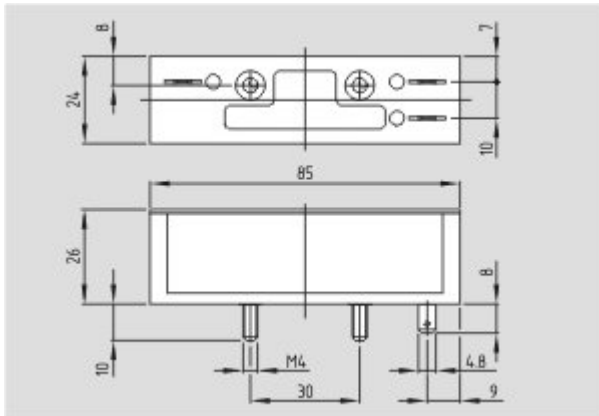
notice - Switch distance (it) 40 kB, 07.08.2009

Code: s_bnbsp05

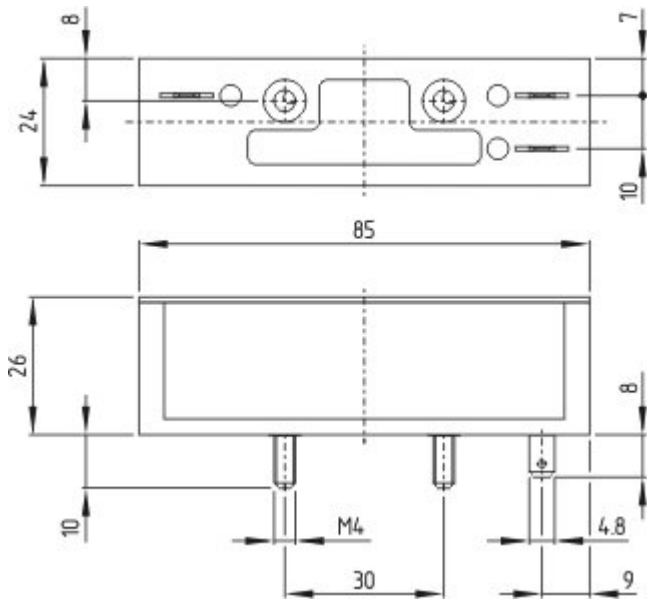
notice - Switch distance (es) 38 kB, 07.08.2009

Code: s_bnbsp09

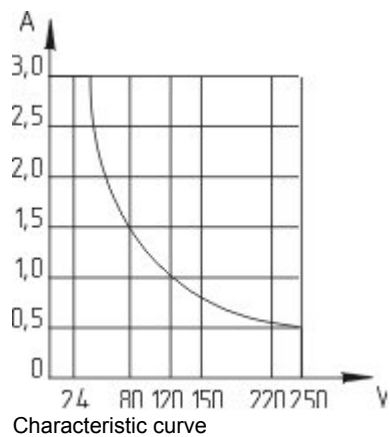
Images



Dimensional drawing (basic component)

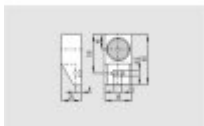


Dimensional drawing (basic component)



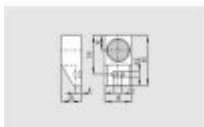
System components

Actuator



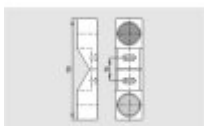
101057534 - BP 21 S

- -metal housing
- S-pole marked red
- Suitable for mounting on ferrous material



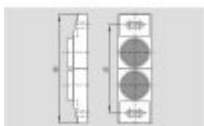
101057536 - BP 21 N

- -metal housing
- N-pole marked green
- Suitable for mounting on ferrous material



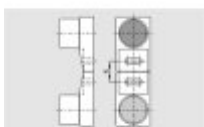
101059921 - BP 21

- -metal housing
- S-pole marked red
- N-pole marked green
- Suitable for mounting on ferrous material



101059917 - BP 12 N

- -metal housing
- N-pole marked green
- Suitable for mounting on ferrous material



101059916 - BP 12

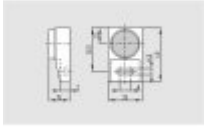
- -metal housing
- S-pole marked red
- N-pole marked green
- Suitable for mounting on ferrous material

101057533 - BP 11 S

- -metal housing

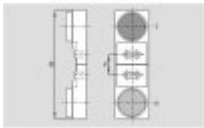


- S-pole marked red
- Suitable for mounting on ferrous material



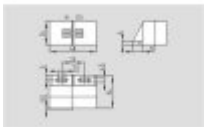
10105923 - BP 11 N

- -metal housing
- N-pole marked green
- Suitable for mounting on ferrous material



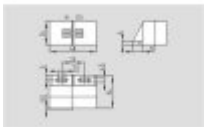
10105922 - BP 11

- -metal housing
- S-pole marked red
- N-pole marked green
- Suitable for mounting on ferrous material



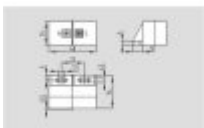
101057521 - BP 31 S

- thermoplastic enclosure
- S-pole marked red
- Suitable for mounting on ferrous material with a distance of 20 mm



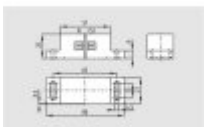
101057520 - BP 31 N

- thermoplastic enclosure
- N-pole marked green
- Suitable for mounting on ferrous material with a distance of 20 mm



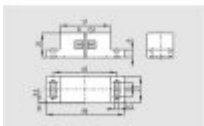
101057530 - BP 31

- thermoplastic enclosure
- S-pole marked red
- N-pole marked green
- Suitable for mounting on ferrous material with a distance of 20 mm



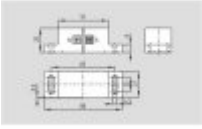
101057541 - BP 20 S

- -metal housing
- S-pole marked red
- Suitable for mounting on ferrous material with a distance of 20 mm



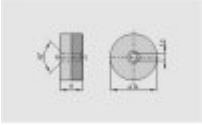
101057538 - BP 20 N

- -metal housing
- N-pole marked green
- Suitable for mounting on ferrous material with a distance of 20 mm



101057549 - BP 20

- -metal housing
- S-pole marked red
- N-pole marked green
- Suitable for mounting on ferrous material with a distance of 20 mm



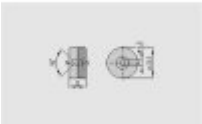
101057553 - BP 34

- thermoplastic enclosure
- S-pole marked red
- N-pole marked green
- Suitable for mounting on ferrous material with a distance of 25 mm



101060165 - BP 15/2

- Unenclosed
- Polarity stamped in
- Suitable for mounting on ferrous material with a distance of 18 mm



101060163 - BP 15

- thermoplastic enclosure
- N-pole marked green
- S-pole marked red
- Suitable for mounting on ferrous material with a distance of 18 mm



101057531 - BP 10

- Unenclosed
- Colour coding of poles by labels