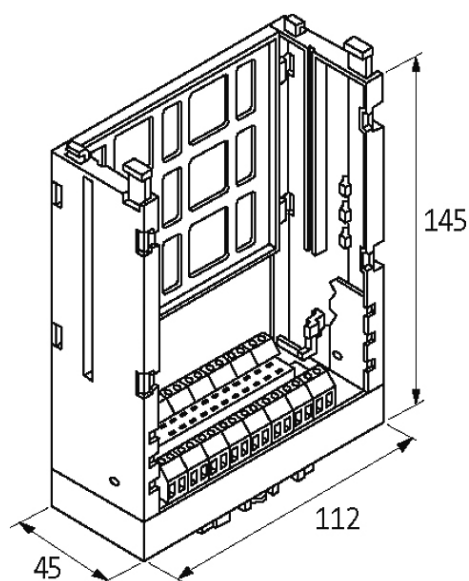


EUROCARD HOLDER

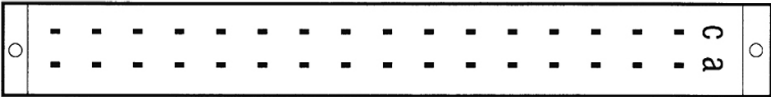
SKT 32 D

Screw terminals
32-pole D (EN 60603)
Row a, c

The D2 size is for a card without a front plate.

[Link to Product](#)**Illustration**

stay connected



Product may differ from Image

Technical Data	
Operating voltage	250 V AC
Operating current	max. 4 A
Configuration	32-pole D (EN 60603)
Material group	EN 60664-1 over voltage, category I
Material	Plastic, flame retardant
General data	
Connection	4 mm ² single core
Mounting method	DIN-rail mountable (EN 60715) in vertical or horizontal position or screw fixing
Dimensions H × W × D	112×45×145 mm
Description	
Functional description	To insert the card first press down the 2 yellow buttons. Then slide the Eurocard into the guide slots pushing until fully engaged. The card is now locked into position. It can be removed by pressing down on the 2 yellow buttons.
Commercial data	
country of origin	CZ
customs tariff number	85369010
EAN	4048879042000
eClass	27260710
Packaging unit	1