

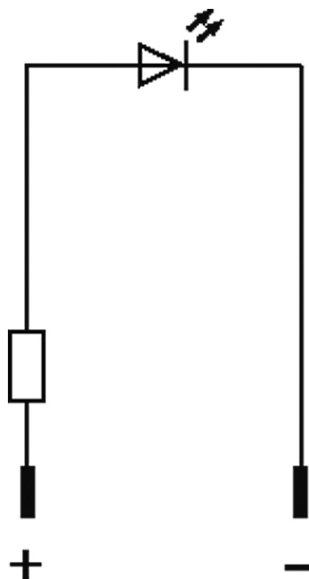
LED-INDICATOR RED

LED 3mm - 24V DC - 20 mA - IP40

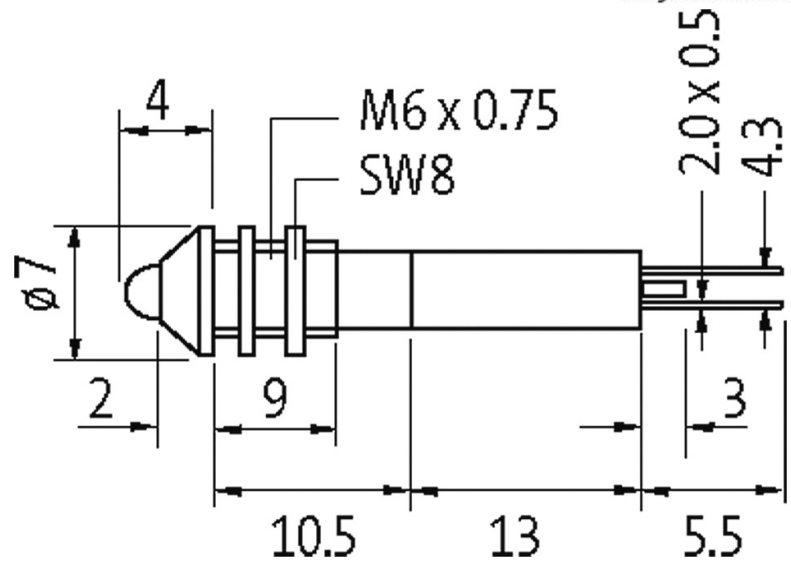
(red)
24 V DC

[Link to Product](#)

Illustration



stay connected



Product may differ from Image

Technical Data

Operating voltage	24 V DC $\pm 15\%$
Current consumption	approx. 15 mA
Protection (IEC 60529/EN 60529)	IP40

General data

Connection	Faston 2.0 x 0.5 mm
Housing	Brass, chrome plated
LED \varnothing	3.0 mm $\pm 5\%$
Front panel hole diameter \varnothing	6 mm
Dimensions H x W x D	7x7x33 mm
Temperature range	-40...+70 °C

Commercial data

country of origin	DE
customs tariff number	85318070
EAN	4048879041218
eClass	27261590
Packaging unit	10