

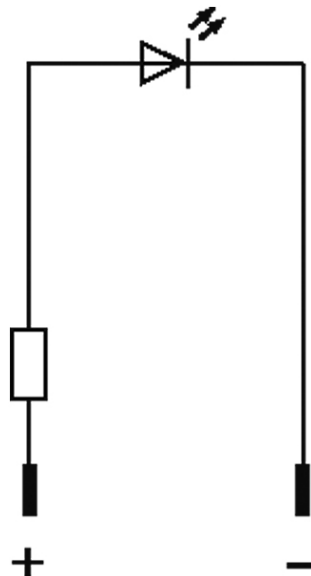
## LED-INDICATOR BLUE

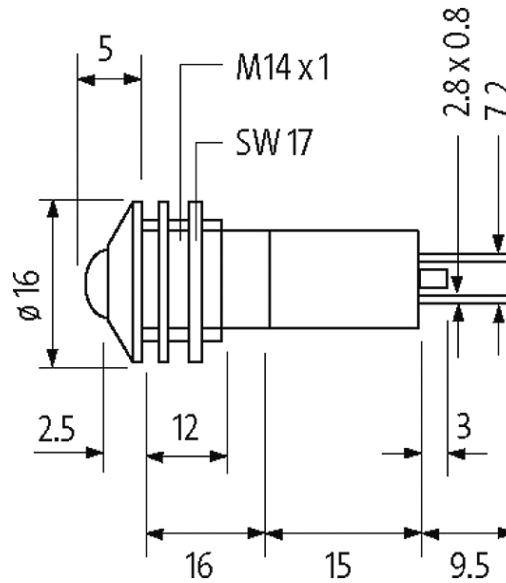
LED 10mm - 24V DC - 20 mA - IP67

(blue)  
24 V DC

[Link to Product](#)

Illustration





Product may differ from Image

### Technical Data

Operating voltage	24 V DC $\pm$ 15%
Current consumption	approx. 15 mA
Protection (IEC 60529/EN 60529)	IP67

### General data

Housing	Brass, chrome plated
LED $\varnothing$	10 mm
Front panel hole diameter $\varnothing$	14 mm
Dimensions H x W x D	16x16x45 mm
Temperature range	-30...+75 °C
Connection	Faston 2.8 x 0.8 mm

### Commercial data

country of origin	DE
customs tariff number	85318070
EAN	4048879041096
eClass	27261590
Packaging unit	10