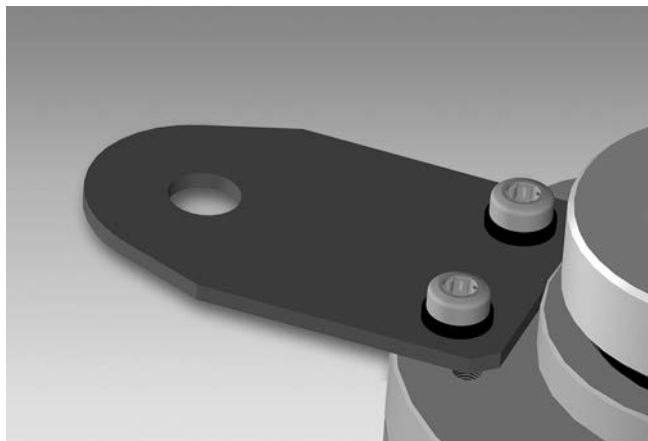


Accessories

Mounting accessories

Mounting kit 099



Features

- Rigid mounting plate with attachment point for Baumer torque arm size M6 (DMS 6)
- Suitable for an electrically isolated mounting.

Description

Mounting plate mount with the screws on the encoder. Torque arm size M6 (DMS 6) mount on the mounting plate. Encoder slide onto the drive shaft and torque arm size M6 mount onto the client side. Clamping ring fastening by the provided screw.

Part number

11155325 Mounting plate, 1-arm, pitch circle diameter $\varnothing 95$ mm, mounting M6, isolated, rigid, suitable for Baumer torque arm size M6 (DMS 6) (mounting kit 099)

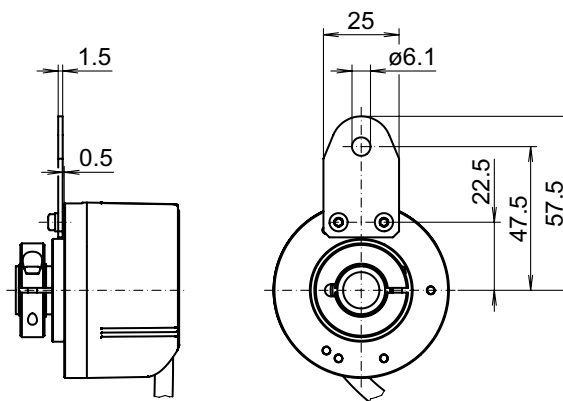
Scope of delivery

Included: Mounting plate, two screws M3 x 6 (DIN 7985 - TX10) with two electrically insulated discs and insulating sockets.

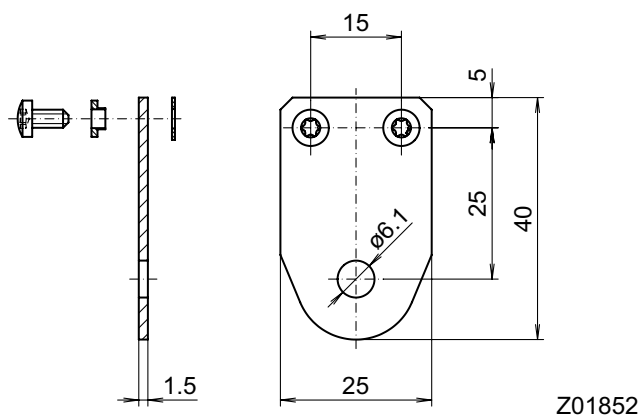
Suitable for

EIL580 - blind hollow shaft, EIL580 - through hollow shaft, EIL580P - blind hollow shaft, EIL580P - through hollow shaft

Assembly drawing



Dimensions



Example with torque arm size M6 (DMS 6)

