

Totalizers electromechanic

Impulse counters adding, screw mount

Display 6-digits, with/without reset button

F 514



F 514 - Front panel with screw mount

Features

- Impulse counter
- Adding
- Display 6-digits
- With or without reset button / key reset
- Front panel with screw mount

Technical data - electrical ratings

Voltage supply	24/110 VAC $\pm 10\%$ (50/60 Hz) 230 VAC $+6/-10\%$ (50/60 Hz) 24 VDC $\pm 10\%$
Residual ripple	<48 %
Nominal frequency	50 / 60 Hz
Power consumption	2 W, 3 VA
Pulse ratio	1:1
Service life	VDC - 100 million impulses VAC - 50 million impulses
Standard DIN EN 61010-1	Protection class II Overvoltage category II Pollution degree 2
Emitted interference	DIN EN 61000-6-4
Interference immunity	DIN EN 61000-6-2

Technical data - mechanical design

Display	White numbers on black
Number of digits	6-digits
Digit height	4.5 mm
Count mode	1 impulse = 1 count
Step-by-step switching	Adding in 2 half steps
Measuring range	999 999
Zero setting	Manual by reset button or detachable key
Ambient temperature	0...+45 °C
Storage temperature	-20...+70 °C
Relative humidity	80 % non-condensing
Protection DIN EN 60529	IP 41
Housing type	Built-in housing
Connection	Soldering pins (flat)
Mounting type	Front panel with 2 screws
Dimensions W x H x L	60 x 37.5 x 61.3 mm
Cutout dimensions	51 x 26 mm
Mounting depth	77.8 mm
Weight approx.	100 g
Material	Housing: Noryl PPO, black

Totalizers electromechanic

Impulse counters adding, screw mount
Display 6-digits, with/without reset button

F 514

Trigger level

Max. counting speed 10 pulses/s

Voltage	24/110 VAC $\pm 10\%$ 230 VAC $+6/-10\%$
---------	---

Power	3 VA
-------	------

Min. pulse duration	50 ms
---------------------	-------

Min. pulse interval	50 ms
---------------------	-------

Switch on time (at 25 °C)	100 %
---------------------------	-------

Max. counting speed 20 pulses/s

Voltage	24 VDC $\pm 10\%$
---------	-------------------

Power	2 W
-------	-----

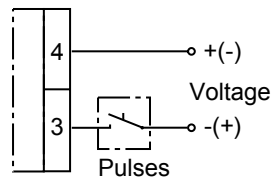
Min. pulse duration	25 ms
---------------------	-------

Min. pulse interval	25 ms
---------------------	-------

Switch on time (at 25 °C)	100 %
---------------------------	-------

Connection diagram

Standard connection



Totalizers electromechanic

Impulse counters adding, screw mount
Display 6-digits, with/without reset button

F 514

Part number

F 514. **B**

Display

B 6-digits 999 999

Voltage / connection

A3 24 VDC / Standard connection

A5 24 VAC / Standard connection

A8 110 VAC / Standard connection

A9 230 VAC / Standard connection

Zero setting

600B Without reset button

640A With detachable key

650A With reset button

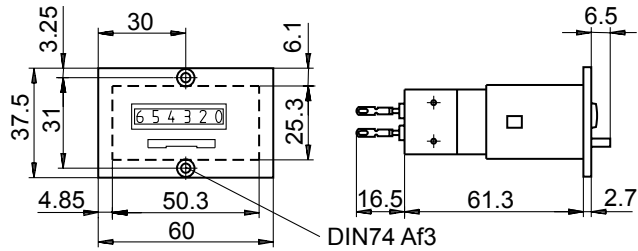
Totalizers electromechanic

Impulse counters adding, screw mount
Display 6-digits, with/without reset button

F 514

Dimensions

F 514 with reset button, 6-digits



F 514 without reset button, 6-digits

