

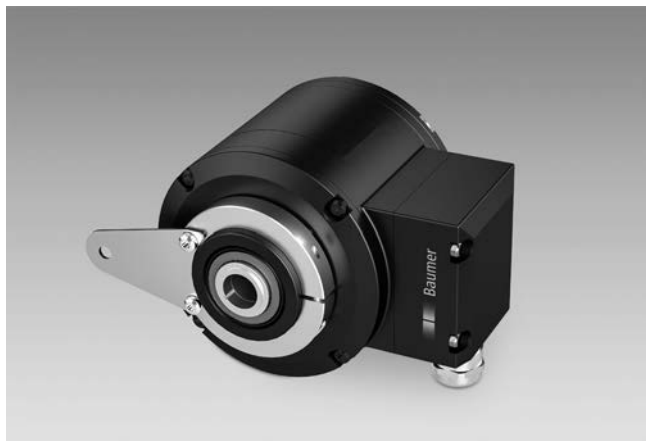
Absolute encoders - bus interfaces

Through hollow shaft

EtherCAT / 13 bit ST / 16 bit MT / Speed switch

Number of pulses and switching speed freely programmable

HMG10P-T - EtherCAT



HMG10P-T - picture similar

Technical data - electrical ratings

Voltage supply	10...30 VDC
Short-circuit proof	Yes
Consumption w/o load	≤200 mA
Initializing time	≤500 ms after power on
Interface	EtherCAT
Function	Multiturn
Transmission rate	100 MBaud
Device address	Automatic address designation
Steps per revolution	8192 / 13 bit
Number of revolutions	65536 / 16 bit
Additional outputs	Square-wave TTL/HTL, TTL/ RS422
Sensing method	Magnetic
Interference immunity	EN 61000-6-2
Emitted interference	EN 61000-6-3
Programming interface	RS485 (≤600 m)
Programmable parameters	Bus system: see bus features Additional output (number of pulses), switch-off and switch-on speeds
Diagnostic function	Position or parameter error
Status indicator	DUO-LED und LEDs link/activity in bus connecting box 4 LEDs in device back side
Approvals	CE, UL approval / E256710

Technical data - electrical ratings (speed switches)

Switching accuracy	±2 % (or 1 Digit)
Switching outputs	1 output (Open collector, solid state relay on request)
Output switching capacity	30 VDC; ≤100 mA
Switching delay time	≤20 ms

Features

- Interface EtherCAT
- Magnetic sensing method
- Resolution: singleturn 13 bit, multiturn 16 bit
- Function display via LEDs
- Multiturn sensing with Energy Harvesting technology, without gear or battery
- Two-sided bearing system with hybrid bearings
- Special protection against corrosion C5-M

Optional

- Integrated speed switch programmable
- Additional output incremental programmable

Technical data - mechanical design

Size (flange)	ø105 mm
Shaft type	ø16...20 mm (through hollow shaft)
Flange	Support plate, 360° freely positionable
Protection DIN EN 60529	IP 66/IP 67
Operating speed	≤6000 rpm
Range of switching speed	ns (off) = ±2...6000 rpm, factory setting 6000 rpm
Operating torque typ.	10 Ncm
Rotor moment of inertia	950 gcm ²
Admitted shaft load	≤450 N axial ≤650 N radial
Materials	Housing: aluminium alloy Shaft: stainless steel
Corrosion protection	IEC 60068-2-52 Salt mist for ambient conditions C5-M (CX) according to ISO 12944-2
Operating temperature	-40...+85 °C
Relative humidity	95 % non-condensing
Resistance	IEC 60068-2-6 Vibration 30 g, 10-2000 Hz IEC 60068-2-27 Shock 400 g, 1 ms
Weight approx.	2.2 kg (depending on version)
Connection	Bus connecting box Terminal box incremental

Absolute encoders - bus interfaces

Through hollow shaft

EtherCAT / 13 bit ST / 16 bit MT / Speed switch

Number of pulses and switching speed freely programmable

HMG10P-T - EtherCAT

Part number

HMG10P

	-T	H		.		G	EC	.3		00		.A
--	----	---	--	---	--	---	----	----	--	----	--	----

Additional output

- 0 Without
- 5 1024 ppr* TTL/HTL (Vin=Vout), 6 channels, electrically isolated
- 6 1024 ppr* TTL/RS422, 6 channels

Resolution multiturn

- 0 Without
- 6 16 bit

Voltage supply / interface

EC 10...30 VDC, EtherCAT

Connection

G 1x bus connecting box with 3 connectors M12, radial +
1x terminal box with 1 cable gland M20, radial

Shaft diameter

- C ø16 mm, clamping ring on drive side
- F ø20 mm, clamping ring on drive side
- P ø16 mm, clamping ring on drive side with keyway

Protection

- D IP 66 and IP 67, optimized for dusty environments
- L IP 66 and IP 67, optimized for oily and wet environments

Flange

H Support for torque arm, shaft insulation hybrid bearing

Speed switch

- Without
- D With speed switch / switching speed 6000 rpm*
(Standard: Open collector, solid state relay on request)

* Factory setting, programmable

Absolute encoders - bus interfaces

Through hollow shaft

EtherCAT / 13 bit ST / 16 bit MT / Speed switch

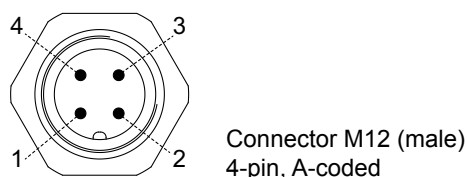
Number of pulses and switching speed freely programmable

HMG10P-T - EtherCAT

EtherCAT - Terminal assignment

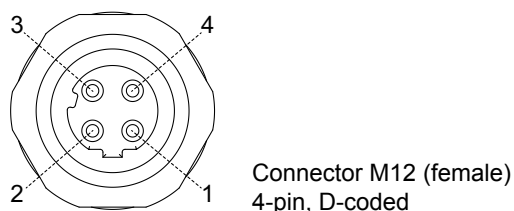
View A¹⁾ - View into connector „Voltage supply“

male	Connection	Description
1	UB	Voltage supply 10...30 VDC
2	-	Do not use
3	GND	Ground for UB
4	-	Do not use



View A²⁾ and A³⁾ - View into connector „Data transmission“

female	Connection	Description
1	TxD+	Transmission data+
2	RxD+	Receiving data+
3	TxD-	Transmission data-
4	RxD-	Receiving data-



EtherCAT - Features

Bus protocol	EtherCAT
Device profile	CoE (CANopen over EtherCAT) DSP406
Features	100 MBaud Ethernet Automatic address designation Distributed clock for precise synchronization. Optional device configuration as „Reference Clock“ Factory setting 10 byte PDO, configurable 4 byte PDO / 2 byte PDO for shorter cycle times
Process data	Position value, Warnings, System time
Cycle times	Depending on sensor type, enabled scaling functionality and length of PDO. Minimum cycle time: 62,5 µs
Synchronization	0x00 Free Run, not synchronized 0x03 Distributed clocks DC, synchronized with SYNCO/SYNC1 Event

¹⁾ See dimensions

²⁾ Additional output incremental (option)

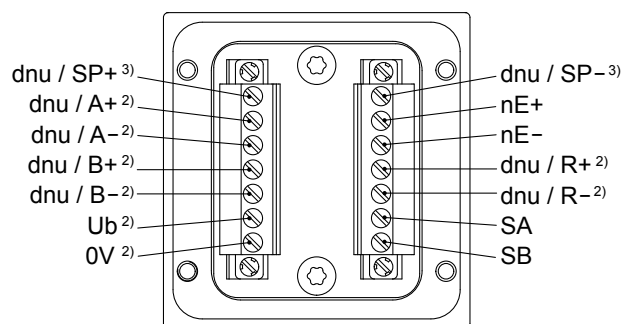
³⁾ Speed switch (option)

Speed switch / additional output incremental - Terminal significance

Ub ²⁾	Voltage supply
0V ²⁾	Ground
A+ ²⁾	Output signal channel 1
A- ²⁾	Output signal channel 1 inverted
B+ ²⁾	Output signal channel 2 (offset by 90° to channel 1)
B- ²⁾	Output signal channel 2 inverted
R+ ²⁾	Zero pulse (reference signal)
R- ²⁾	Zero pulse inverted
nE+	System OK+ / error output
nE-	System OK- / error output inverted
SP+ ³⁾	DSL_OUT1 / speed switch (Open collector, solid state relay on request)
SP- ³⁾	DSL_OUT2 / speed switch (0V, solid state relay on request)
SA	RS485+ / programming interface
SB	RS485- / programming interface
dnu	Do not use

Speed switch / additional output incremental - Terminal assignment terminal box

View B¹⁾



Absolute encoders - bus interfaces

Through hollow shaft

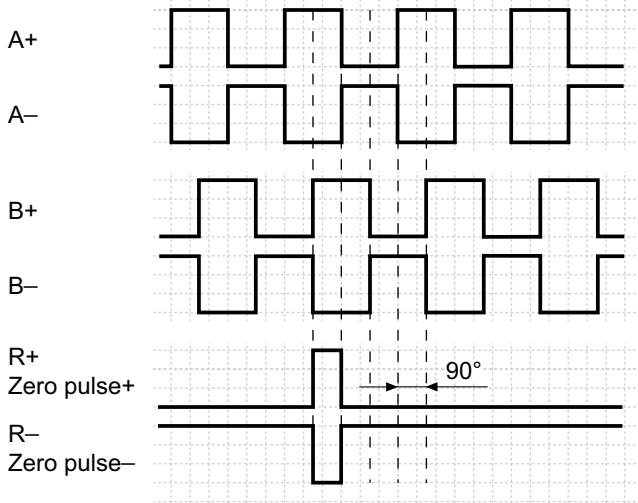
EtherCAT / 13 bit ST / 16 bit MT / Speed switch

Number of pulses and switching speed freely programmable

HMG10P-T - EtherCAT

Additional output incremental - Output signals

Version with additional output incremental at positive rotating direction¹⁾



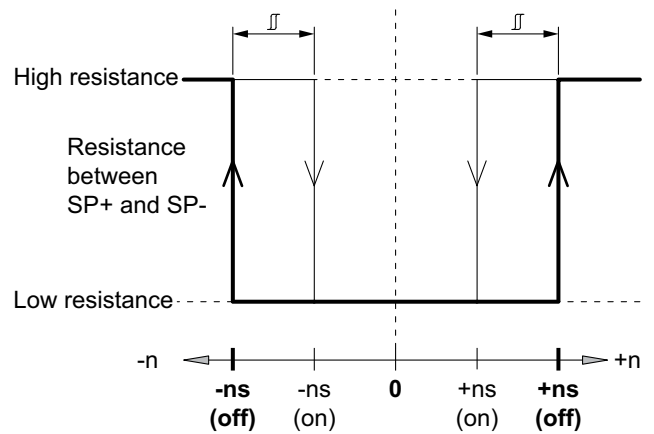
Additional output incremental - Trigger level

Trigger level	TTL/RS422
High / Low	$\geq 2.5 \text{ V} / \leq 0.5 \text{ V}$
Transmission length	$\leq 550 \text{ m @ } 100 \text{ kHz}$
Output frequency	$\leq 600 \text{ kHz}$
Trigger level	TTL/HTL ($V_{in} = V_{out}$)
High / Low	$\geq 2.5 \text{ V} / \leq 0.5 \text{ V (TTL)}$ $\geq U_b - 3 \text{ V} / \leq 1.5 \text{ V (HTL)}$
Transmission length	$\leq 550 \text{ m @ } 100 \text{ kHz (TTL)}$ $\leq 350 \text{ m @ } 100 \text{ kHz (HTL)}$
Output frequency	$\leq 600 \text{ kHz (TTL)}$ $\leq 350 \text{ kHz (HTL)}$

Electrically isolated:

The output TTL/HTL ($V_{in} = V_{out}$) at the additional output incremental is electrically isolated and requires a separate power supply.

Speed switch - Switching characteristics



n = Speed

+ns (off) = Switch-off speed at shaft rotation in positive rotating direction¹⁾.

-ns (off) = Switch-off speed at shaft rotation in negative rotating direction¹⁾.

Switching hysteresis Δ :

5...100 % (factory setting = 10 % min. 1 Digit)

+ns (on) = Switch-on speed at shaft rotation in positive rotating direction¹⁾.

-ns (on) = Switch-on speed at shaft rotation in negative rotating direction¹⁾.

¹⁾ See dimensions

Absolute encoders - bus interfaces

Through hollow shaft

EtherCAT / 13 bit ST / 16 bit MT / Speed switch

Number of pulses and switching speed freely programmable

HMG10P-T - EtherCAT

Accessories

Connectors and cables

11191145	Adapter cable for programming the HMG10P/PMG10P bus interfaces series D-SUB connector (male) 15-pin with connecting cable, D-SUB connector (male) 9-pin and 7-pin connecting terminal
----------	--

Mounting accessories

11043628	Torque arm M6, length 67-70 mm
11004078	Torque arm M6, length 120-130 mm (shortenable ≥ 71 mm)
11002915	Torque arm M6, length 425-460 mm (shortenable ≥ 131 mm)
11054917	Torque arm M6 insulated, length 67-70 mm
11072795	Torque arm M6 insulated, length 120-130 mm (shortenable ≥ 71 mm)
11082677	Torque arm M6 insulated, length 425-460 mm (shortenable ≥ 131 mm)
11077197	Mounting kit for torque arm size M6 and earthing strap
11077087	Mounting and dismounting set

Programming accessories

11190106	Z-PA.SDL.1 - WLAN-Adapter Programming unit for xMG10P series
----------	---

Absolute encoders - bus interfaces

Through hollow shaft

EtherCAT / 13 bit ST / 16 bit MT / Speed switch

Number of pulses and switching speed freely programmable

HMG10P-T - EtherCAT

Dimensions

