

# ASi-5/ASi-3 EtherCAT Gateway with integrated Safety Monitor

## ASi-5/ASi-3 EtherCAT-Gateway with integrated Safety Monitor

New standard ASi-5

ASi-5 – Great data bandwidth, short cycle times

Compatible with all ASi generations

ASi-5 master and ASi-3 master in one device

Safety over EtherCAT (configurable as device or master)

Safety over EtherCAT (FSoE) and Safe Link in one device

- up to 450 devices

Safely monitoring safety drives with Safety over EtherCAT (FSoE)

1 ASi-5/ASi-3 master, EtherCAT device

Up to 64 release circuits

- up to 6 release circuits SIL 3, cat. 4 on the Monitor, fast electronic safe outputs

Safe ASi outputs are supported

- up to 64 independent ASi outputs  
Multiple safe ASi outputs possible via a single ASi address

OPC UA server and integrated web server for simplified diagnostics

Selection of Mode of Safe Operation

Safe speed and standstill monitoring


Applications up to category 4/PLe/SIL 3

Chip card for storage of configuration data



(figure similar)



Figure	Type	Inputs Safety, SIL 3, cat. 4	Inputs Safety, expandable to	Outputs Safety, SIL 3, cat. 4	Safety outputs, independent according to SIL 3, expandable to	Safety communication	Number of ASi networks, number of ASi Master <sup>(1)</sup>	1 power supply, 1 gateway for 2 ASi networks, inexpensive power supplies <sup>(2)</sup>	Diagnostic and configuration interface <sup>(3)</sup>	Art. no.
	Safety EtherCAT, ASi-5 / ASi-3	3 x 2 cannels	max. 31 x 2 channels, max. 1891 in max. configuration	6 release circuits; 6 x fast electronic safe outputs	max. 64, max. 1984 in max. configuration	FSoE + Safe Link	1 ASi network, 1 ASi-5/ASi-3 master	yes, max. 4 A/ASi network	Ethernet diagnostic	<b>BWU3583</b>

<sup>(1)</sup> Number of ASi networks, number of ASi Master  
"Single Master": 1 ASi network, 1 ASi-5/ASi-3 master.

# ASi-5/ASi-3 EtherCAT Gateway with integrated Safety Monitor

- (2) **1 power supply, 1 gateway for 2 ASi networks, inexpensive power supplies**  
**"yes, max. 4 A/ASi network"**: Cost-effective power for 2 ASi networks with 1 power supply (optionally supply of multiple Single Gateways by 1 power supply). Operation with short cable lengths with standard 24 V power supply possible.
- (3) **Diagnostic and configuration interface**  
**"Ethernet diagnostic"**: Access to AS-i master and safety monitor via Bihl+Wiedemann proprietary software over Ethernet diagnostics interface.

The latest version of the device description file of the gateway is available in the "Downloads" section of the respective device.

<b>Article no.</b>	<b>BWU3583</b>
<b>Fieldbus interface</b>	
Type	EtherCAT, RJ-45 acc. IEEE 802.3
Baud rates	100 MBaud
Safety communication	FSoE
OPC UA interface	–
Card slot	chip card (512 KB) for storage of configuration data
<b>Diagnostic interface</b>	
Type	Ethernet, RJ-45 acc. IEEE 802.3
Baud rate	10/100 MBaud half-duplex or full-duplex
Safety communication	Safe Link
OPC UA interface	OPC UA server + web server
<b>ASi</b>	
ASi specification	ASi-3 + ASi-5
Cycle time	<b>Cycle time ASi-3 (variable):</b> 150 µs * (number of ASi-3 nodes + 2) <b>Cycle time ASi-5 (constant):</b> 1,27 ms for 384 bits input data + 384 bits output data
Operating voltage	30 V <sub>DC</sub> (20 ... 31,6 V) (PELV voltage)
Operating current	300 mA
ASi Power24V capability <sup>(1)</sup>	yes
<b>AUX</b>	
Operating voltage	24 V <sub>DC</sub> (19,2 ... 28,8 V)
Max current consumption	7,2 A
<b>Display</b>	
LCD	menu, indication of ASi addresses and error messages in plain text
LED power (green)	power on
LED ect run (green)	EtherCAT communication active
LED config error (red)	configuration error
LED U ASi (green)	ASi voltage o.k.
LED ASi active (green)	ASi normal operation active
LED prg enable (green)	automatic addresses programming enabled
LED prj mode (yellow)	configuration mode active
LED AUX (green)	ASi power on and auxiliary power on
LEDs SI1 ... SI6 (yellow)	state of inputs: LED off: open LED on: closed
LEDs SO1 ... SO6 (yellow)	state of outputs: LED off: open LED on: closed
<b>UL-specifications (UL508)</b>	
External protection	An isolated source with a secondary open circuit voltage of ≤30 V <sub>DC</sub> with a 3 A maximum over current protection. Over current protection is not required when a Class 2 source is employed.
In general	UL mark does not provide UL certification for any functional safety rating or aspects of the above devices.

# ASi-5/ASi-3 EtherCAT Gateway with integrated Safety Monitor

<b>Article no.</b>	<b>BWU3583</b>
<b>Environment</b>	
Applied standards	EN 50581 EN 62026-2 EN 60529 EN 61000-6-2 EN 61000-6-4 EN 61131-2 EN 61326-3-1 EN 62061, SIL 3 EN 61508, SIL 3 EN ISO 13849-1, PL e EN ISO 13849-2
Operating altitude	2000 m
Ambient temperature	-25 °C ... +55 °C (no condensation permitted)
Storage temperature	-25 °C ... +85 °C
Housing	stainless steel, for DIN rail mounting
Pollution Degree	2
Protection category	IP20
Tolerable loading referring to humidity	according to EN 61131-2
Maximum tolerable shock and vibration stress	according to EN 61131-2
Voltage of insulation	≥500 V
Weight	800 g
Dimensions (W / H / D in mm)	109 / 120 / 106

(1) **ASi Power24V**

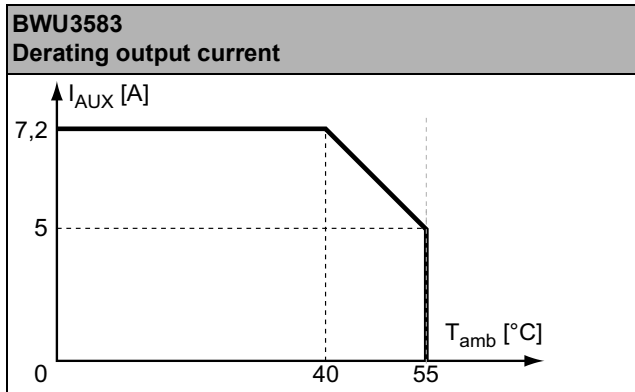
The device can be operated directly on a 24 V (PELV) power supply. The gateway has been optimized with integrated data coupling coils and adjustable self-resetting fuses for safe use of powerful 24 V power supplies.

<b>Article no.</b>	<b>BWU3583</b>
<b>Safety monitor</b>	
Start delay	< 10 ms
Max. turn-off time	< 40 ms
Antivalent switches for local inputs	yes
Standstill monitors for local inputs	6 axes, up to 50 Hz <sup>(1)</sup>
Speed monitors for local inputs	3 to 6 axes, up to 400 Hz <sup>(2)</sup>
<b>Connection</b>	
Connection	COMBICON
Length of connector cable	unlimited <sup>(3)</sup>
<b>Input</b>	
Inputs Safety, SIL3, cat. 4	3 x 2 channels <sup>(4)</sup>
Inputs digital, EDM	up to 6 standard inputs <sup>(4)</sup>
Switching current	15 mA (T = 100 µs), continuously 4 mA at 24 V
Power supply	out of AUX
Sensor supply	short-circuit and overload protected according to EN 61131-2

# ASi-5/ASi-3 EtherCAT Gateway with integrated Safety Monitor

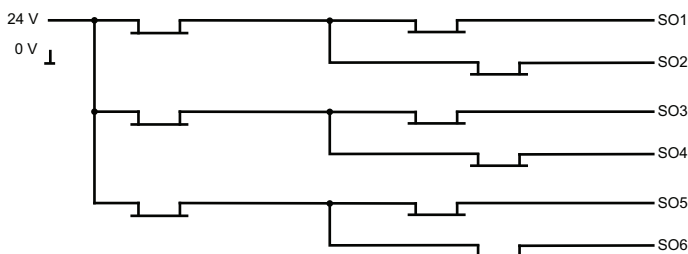
<b>Article no.</b>	<b>BWU3583</b>
<b>Output</b>	
Number of release circuits on the monitor	6
Outputs	semiconductor output max. contact load: 1,2 A <sub>DC-13</sub> at 30 V, $\Sigma = 7,2$ A in sum <sup>(5)</sup>
Power supply (semiconductor outputs)	out of AUX
Output	short-circuit and overload protected according to EN 61131-2
Test pulse (semiconductor outputs)	if output is on: minimum interval between 2 test pulses: 250 ms; maximum pulse width 1 ms

- (1) connection at all SI or SO terminals possible.  
 (2) connection only at terminals SO1 ... SO6 configured as standard inputs (see "Variations of terminal configuration for BWU3583")  
 (3) loop resistance  $\leq 150 \Omega$   
 (4) see "Variations of terminal configuration for BWU3583"  
 (5)



	<b>BWU3583</b>
<b>Current measurement of the ASi circuits</b>	•
<b>Self-resetting adjustable fuses</b>	•
<b>ASi earth fault monitor distinguishes between ASi cable and sensor cable</b>	•
<b>In version „1 gateway, 1 power supply for 2 ASi circuits“: only 1 gateway + 1 ASi power supply is needed for both 2 ASi circuits</b>	•

## Safety outputs block diagram BWU3583:



# ASi-5/ASi-3 EtherCAT Gateway with integrated Safety Monitor

## Variations of terminal configuration for BWU3583

Terminal	Safe output	Safe input for mechanical contacts in combination with T1, T2 <sup>(1)</sup>	Safe antivalent input <sup>(1)</sup>	Safe electronic input <sup>(1)</sup>	Standard input <sup>(1)</sup>
SI1,2	–	•	•	•	•
SI3,4	–	•	•	•	•
SI5,6	–	•	•	•	•
SO1,2 <sup>(2)</sup>	•	•	•	–	•
SO3,4 <sup>(2)</sup>	•	•	•	–	•
SO5,6 <sup>(2)</sup>	•	•	•	–	•

(1) Inputs may only be supplied by the same 24 V source as the device itself.

(2) If outputs are configured as inputs, the input current has to be limited by an external element at ≤ 100 mA.

## Connections: Gateway + Safety Monitor:

BWU3583	Connection	Description	
	SI1, SI3, SI5	Safe input terminal (T1)	
	SI2, SI4, SI6	Safe input terminal (T2)	
	T1	Clock output 1	
	T2	Clock output 2	
	SO1 ... SO6	Safe semiconductor outputs 1 ... 6	
	24 V, 0 V	Power supply for local I/Os	
	+ASI 1-	Connection of ASi circuit	
	ASI +PWR-	Power supply for Gateway and ASi networks	

## Accessories:

- Safe contact expander, 1 or 2 independent channels (art. no. BWU2548 / BWU2539)
- Chip card, memory capacity 512 kB (art. no. BW4055)
- Bihl+Wiedemann Safety Suite - Safety Software for Configuration, Diagnostics and Commissioning (art. no. BW2916)
- Power supplies, e.g.: 30 V power supply, 4 A, 1 phase (art. no. BW4218), 30 V power supply, 8 A, 1 phase (art. no. BW4219), 30 V power supply, 8 A, 3 phases (art. no. BW4220), 30 V Power Supply, 16 A, 1 phase (art. no. BW4221), 30 V Power Supply, 16 A, 3 phases (art. no. BW4222) (for further power supply units visit [www.bihl-wiedemann.de/en/products/accessories/power-supplies](http://www.bihl-wiedemann.de/en/products/accessories/power-supplies))