

Demanding environment

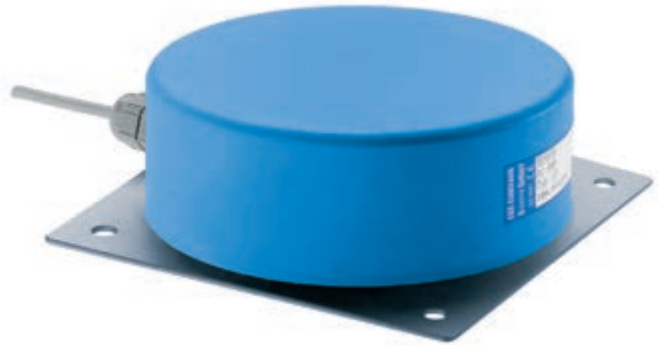
Series ID - Proximity switches

Ø 160 mm

DC 10...55 V
AC 20...250 V

Sensing range adjustable

Increased EMC



Design	DC PNP • Ø 160 mm	DC PNP • Ø 160 mm	AC • Ø 160 mm programmable
Dimensions Installation non flush (nf)			
Operating distance sn [mm] (Adjustable range)	120 nf (20...150)	120 nf (20...150)	120 nf (20...150)
GSP ID-No. Type P31325 IDU 160 GSP	P31325 IDU 160 GSP	P31326 ID 160 GSP	-
GSOP ID-No. Type P31270 IDU 160 GSOP	P31270 IDU 160 GSOP	P31271 ID 160 GSOP	-
WP ID-No. Type - -	-	-	P31272 IDS 160 WP
Supply voltage [V]	10...55 DC	10...55 DC	20...250 AC
Switching current [mA]	400	400	400
Short circuit proof	•	•	3000 mA/10 ms
Reverse protection	•	•	-
Voltage drop max. [V]	2	2	6 eff.
Minimum load current [mA]	-	-	8
Current consumption [mA]	4	4	2.5
Switching frequency [Hz]	20	20	10
Ambient temperature [°C]	-25...+75	-25...+75	-25...+75
EMC-class	A	A	A
Protection [EN 60529]	IP 67	IP 67	IP 67
LED display	•	•	•
Housing material	PBT / Aluminium	PBT / Aluminium	PBT / Aluminium
Connection	M12 connector	GSP: 2 m PVC-cable, 3x0.5 mm ² GSOP: 2 m PVC-cable, 4x0.5 mm ²	PG-plug connection 2 m, 2x0.75 mm ² , PVC
	GSP 	GSOP 	WP
Accessories	connecting cable SLG 3-2 (GSP) / SLG 4-2 (GSOP), page 3.69		