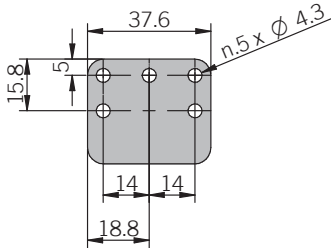
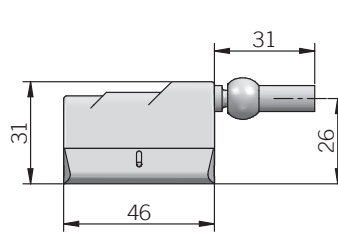


## CURSORS FOR EMSPA - EMSPB - EMSPS

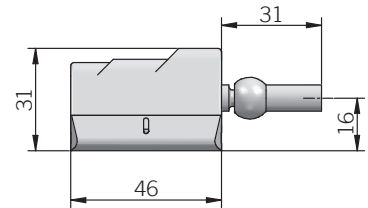
Floating cursor EMS-CSF  
P/N 95490012



Sliding cursor axial joint high EMS-CSA  
P/N 95490000

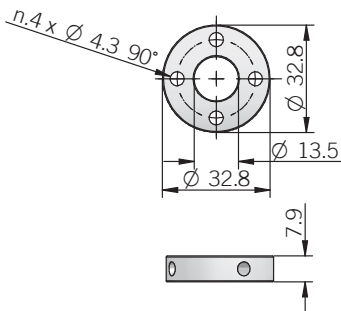


Sliding cursor axial joint low EMS-CSB  
P/N 95490001

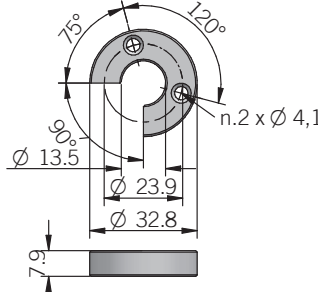


## FLOATING CURSORS FOR EMSSA - EMSSS

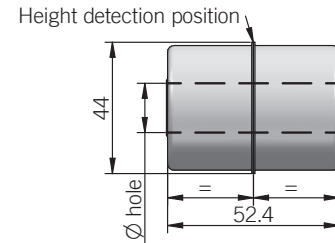
Floating cursor EMS-CAA



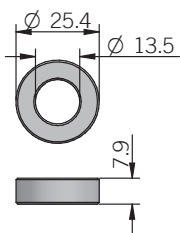
Floating cursor EMS-CAB



Floating cursor for liquids EMS-CAG12 / EMS-CAG15

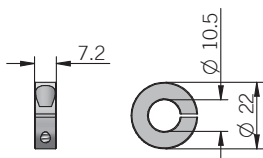


Floating cursor EMS-CAC



Description	P/N	Material	Scope of delivery
EMS-CAA	95590000	aluminum	n.4 M4 brass nuts n.8 D4 brass washers n.4 M4x25 brass screws
EMS-CAB	95590001	aluminum	n.4 M4 brass nuts n.4 D4 brass washers n.2 M4x25 brass screws
EMS-CAC	95590011	aluminum	/
EMS-CAG12	95590012	AISI 316 stainless steel	12 mm hole
EMS-CAG15	95590013	AISI 316 stainless steel	15 mm hole

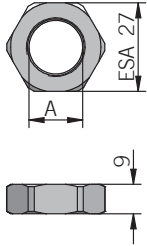
## COLLAR CLAMPING FOR EMS-CAG12 / EMS-CAG15



Description	P/N	Material	Scope of delivery
EMS-FG01	95590014	AISI 316 stainless steel	n.1 D3 AISI 316 washer n.1 M3x8 AISI 316 screw

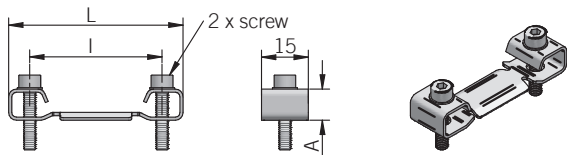
dimensions in mm

HEX NUT



Description	P/N	Material	A	Applicable to model
EMS-CD01	95590010	AISI 316 stainless steel	M18 x 1,5	EMSSA - EMSSS
EMS-CD02	95590015	AISI 316 stainless steel	3/4" - 16UNF	EMSSA - EMSSS

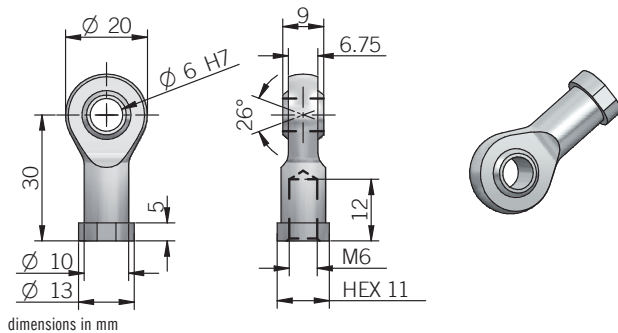
BRACKETS



Scope of delivery  
n.2 brackets

Description	P/N	Center-to-center (I)	Overall dimension (L)	Height (A)	Screw (M)	Applicable to model
EMSPA-EMSPS-ST42	95490011	42,5	56	12,4	M4	EMSPA - EMSPS
EMSPA-EMSPS-ST50	95490010	50	63,5	12,4	M5	EMSPA - EMSPS
EMSPB-ST42	95490022	42,5	56	10	M4	EMSPB
EMSPB-ST50	95490026	50	63,5	10	M5	EMSPB

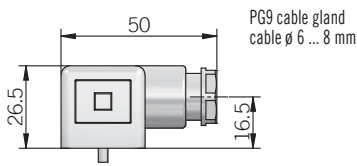
EPLA BALL JOINT



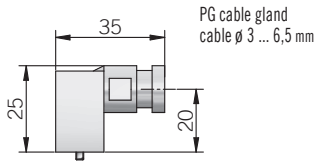
dimensions in mm

Description	P/N	Material	Scope of delivery	Applicable to model
EPLA-SN01	95390003	Steel	n.1 Ø 6 mm ball joint	EPLA

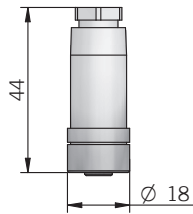
CONNECTORS



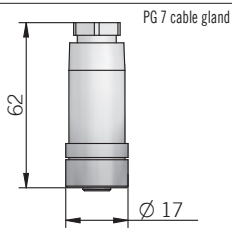
Description	P/N	Material	Scope of delivery	Applicable to model
EPLA/C-EMSPB C04FV 90° (IP 65)	95390004	Plastic	n.1 female DIN 43650-A (4 pin) connector	EPLA - EPLC - EMSPB



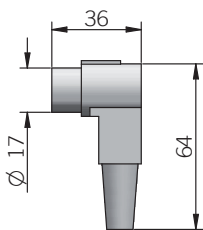
Description	P/N	Material	Scope of delivery	Applicable to model
EPLB-C04FV 90° (IP 65)	95390001	Plastic	n.1 female 43650-C (4 pin) connector	EPLB



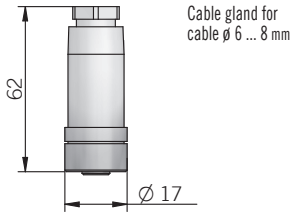
Description	P/N	Material	Scope of delivery	Applicable to model
EPL-C03FV (IP 40)	95390002	Plastic	n.1 female C03FV (3 pin) connector	EPLA - EPLB



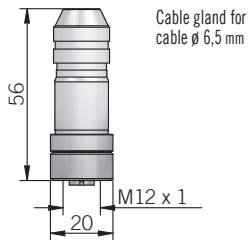
Description	P/N	Material	Scope of delivery	Applicable to model
EPL-C05FV (IP 67)	95390005	Metal	n.1 female DIN 43322 (5 pin) connector	EPLA - EPLB - EPLC - EPLT



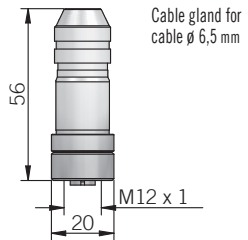
Description	P/N	Material	Scope of delivery	Applicable to model
EPL-C05FV 90° (IP 40)	95390007	Plastic	n.1 female DIN 43322 (5 pin) connector	EPLA - EPLB - EPLC - EPLT



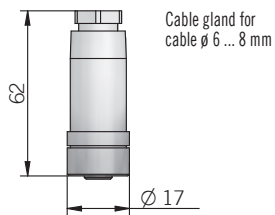
Description	P/N	Material	Scope of delivery	Applicable to model
EMS-C08FV (IP 67)	95490025	Metal	n.1 female M16 DIN 45326 (8 pin) connector	EMSPA - EMSPS



Description	P/N	Material	Scope of delivery	Applicable to model
EMS-S05FV (IP 67)	95490002	Metal	n.1 female M12 A coded (5 pin) connector	EMSPA - EMSPB



Description	P/N	Material	Scope of delivery	Applicable to model
EMS-S08FV (IP 67)	95490024	Metal	n.1 female M12 A coded (8 pin) connector	EMSPA - EMSPB



Description	P/N	Material	Scope of delivery	Applicable to model
EMS-C06FV (IP 67)	95490015	Metal	n.1 female M16 DIN 45322 (6 pin) connector	EMSPA - EMSPS - EMSSA - EMSSS