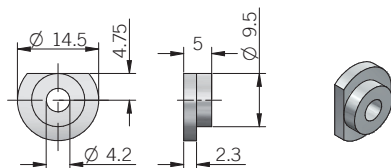
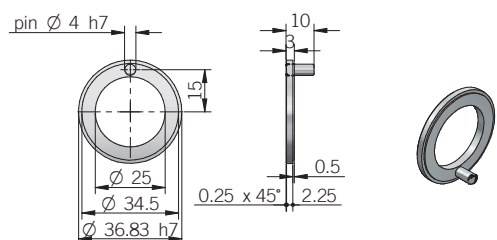


FIXING CLAMPS

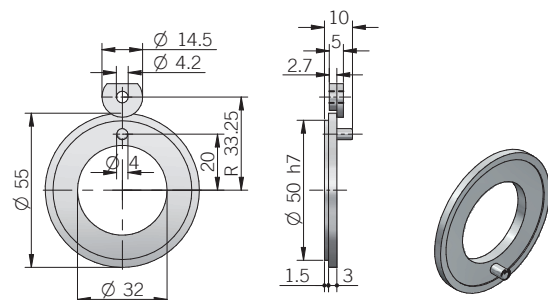


Description	P/N	Material	Scope of delivery	Applicable to model
kit n.3 fixing clamps	94080001	EN-AW 2011 aluminum	n.3 fixing clamps	36K - 40N - 40X - 49C/P - 50A/B - 58B - 63A - 80A - 90A

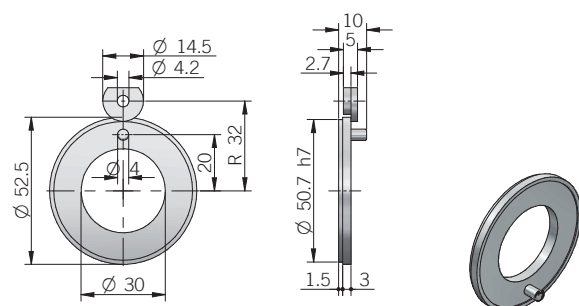
MECHANICAL FLANGES



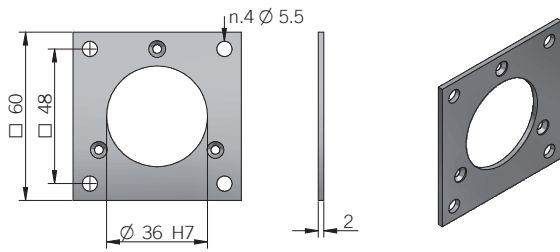
Description	P/N	Material	Scope of delivery	Applicable to model
FLG004 - resolver flange size 15	94010076	EN-AW 2011 aluminum	n.1 flange	36K



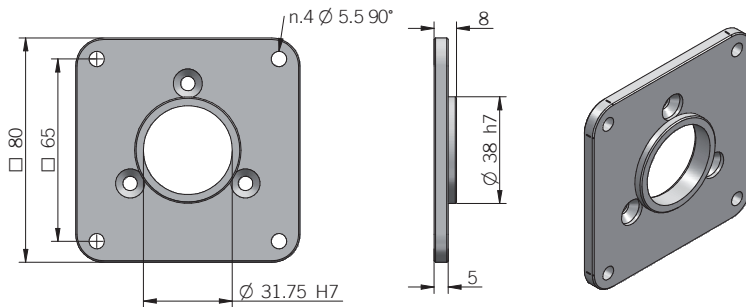
Description	P/N	Material	Scope of delivery	Applicable to model
FLG000 - resolver flange size 19 (01 version)	94010087	EN-AW 2011 aluminum	n.1 flange	49C/P



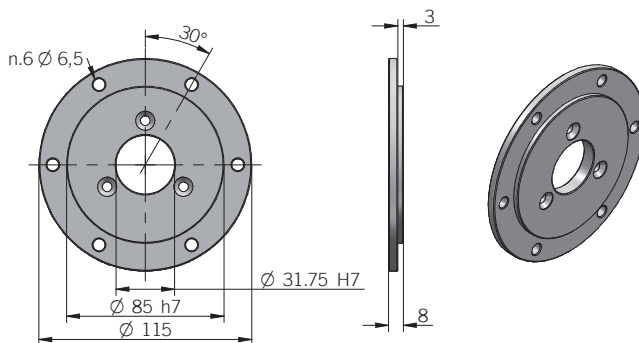
Description	P/N	Material	Scope of delivery	Applicable to model
FLG001 - resolver flange size 19 (14 version)	94010065	EN-AW 2011 aluminum	n.1 flange	49C/P



Description	P/N	Material	Scope of delivery	Applicable to model
58C square flange	94990048	EN-AW 2011 aluminum	n.1 58C square flange n.3 M3x6 screws	58C

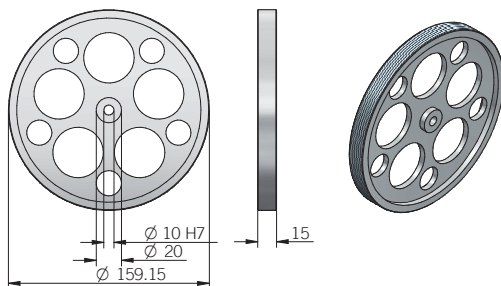


Description	P/N	Material	Scope of delivery	Applicable to model
63A square flange	94990049	EN-AW 2011 aluminum	n.1 63A square flange n.3 M5x10 screws	63A



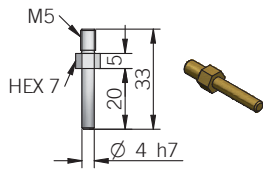
Description	P/N	Material	Scope of delivery	Applicable to model
63A REO-444 flange	94990050	EN-AW 2011 aluminum	n.1 63A REO-444 flange n.3 M5x10 screws	63A

MEASURING WHEELS

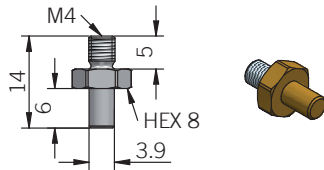


Description	P/N	Material	Scope of delivery	Applicable to model
Measuring wheel weight 260 g (9,17 oz)	44030108	EN-AW 2011 aluminum	n.1 measuring wheel n.1 M5x16 screw	RL - RM 500

TORQUE PINS



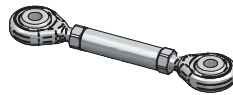
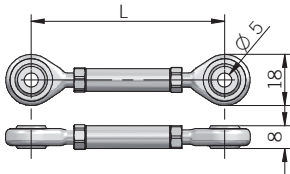
Description	P/N	Material	Scope of delivery	Applicable to model
M5 4mm torque pin	23240008	Brass	n.1 torque pin	EH - EF 80



Description	P/N	Material	Scope of delivery	Applicable to model
M4 3,9 mm torque pin	94080010	Brass	n.2 torque pins	88PE

TORQUE ARM

For applications with low axial and radial play



Length

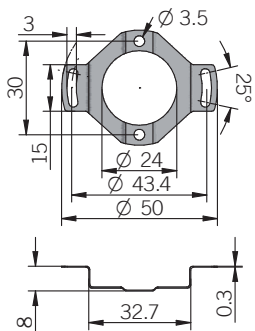
SN5A30 L = 80 ± 10mm

SN5A60 L = 110 ± 10mm

SN5A90 L = 140 ± 10mm

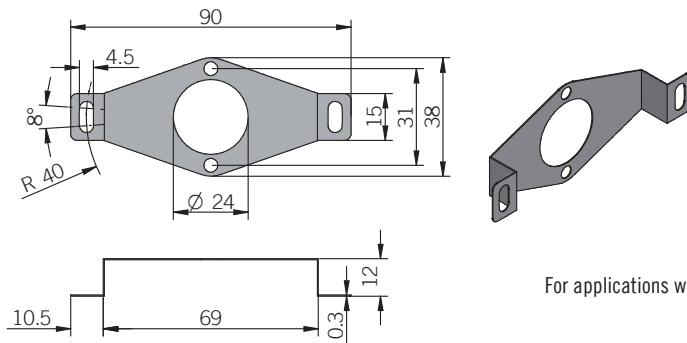
Description	P/N	Material	Scope of delivery	Applicable to model
SN5A30	94010061	Steel	n. 1 torque arm n. 2 M5 x 12 UNI ISO 7380	88PE - 120P
SN5A60	94010070			
SN5A90	94010071			

ENCODER COUPLINGS



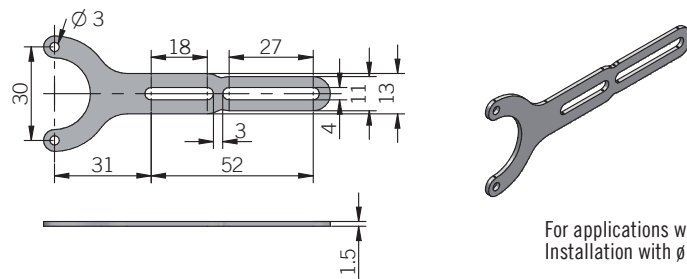
For applications with high dynamics and moderate axial play and low radial play

Description	P/N	Material	Scope of delivery	Applicable to model
Ø 43,4 mm spring coupling	94990046	1.4310 AISI 301	n.1 encoder spring n.2 M3x4 screws	38F



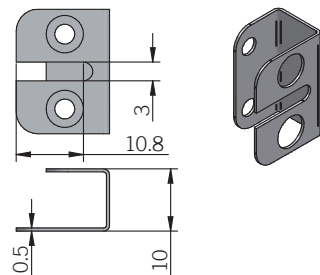
For applications with high dynamics and moderate axial play and low radial play

Description	P/N	Material	Scope of delivery	Applicable to model
ø 80 mm spring coupling	94990047	1.4310 AISI 301	n.1 encoder spring n.2 M3x4 screws	38F



For applications with low dynamics and high axial play and low radial play.
Installation with ø 4 mm cylindrical pin. Do not install with rigid fixing (e.g. screw)

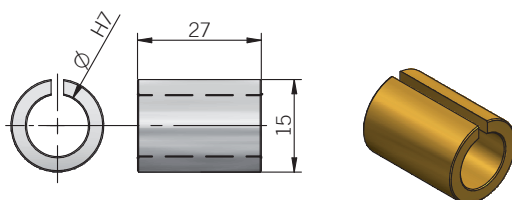
Description	P/N	Material	Scope of delivery	Applicable to model
38F bracket kit	94990045	Stainless steel	n.1 bracket n.2 M3x4 screws	38F



For applications with low dynamics and high axial play and low radial play.
Installation with ø 3 mm cylindrical pin. Do not install with rigid fixing.

Description	P/N	Material	Scope of delivery	Applicable to model
88P-88PE torque stop kit	94990051	1.4310 AISI 301	n.1 torque stop n.2 M3x4 screws	88P - 88PE

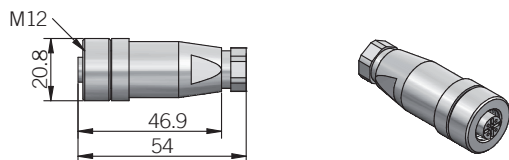
SHAFT ADAPTERS



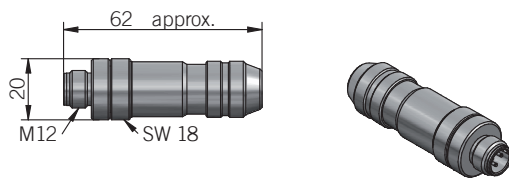
Description	P/N	Material	Scope of delivery	Applicable to model
Shaft adapter 15/12 mm	41890398	Bronze	n.1 shaft adapter	AAM 58F
Shaft adapter 15/10 mm	41890399			

For further shaft adapter diameters please directly contact our offices

CONNECTORS



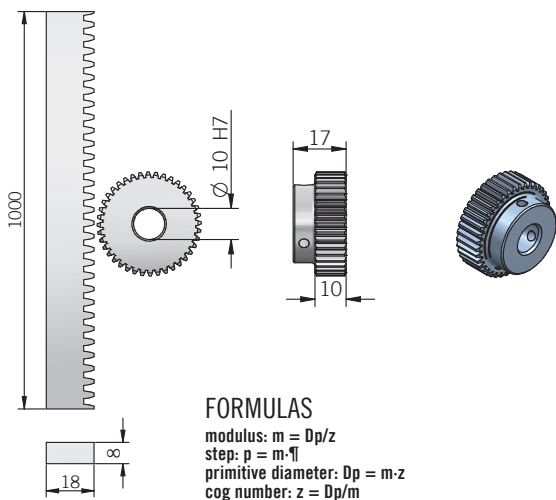
Description	P/N	Material	Scope of delivery	Applicable to model
M12 female connector for power supply (POWER)	22030091	Plastic	n.1 female M12 A coded connector	AAM 58



Description	P/N	Material	Scope of delivery	Applicable to model
M12 male connector for I/O (PORT 1 / 2)	22030152	Metal	n.1 female M12 D coded connector	AAM 58

EC34 ACCESSORIES

Rack and cogged wheel
 $p = 2,5$ $z = 40$ $m = 0,796$



dimensions in mm

Description	P/N	Material	Scope of delivery	Applicable to model
Cogged wheel $M = 0,796$ / $P = 2,5$ / $Z = 4$	94080003	C45 steel	n.1 cogged wheel	34A
Rack $P = 2,5$ / 1m length	23280006		n.1 1m P 2,5 rack	