

## ITEM 050428 NZ2VZ-538E3VSM04

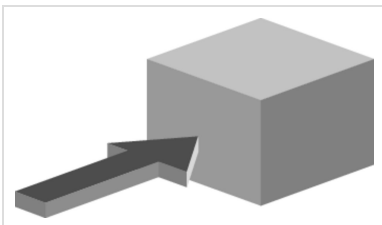
Description	Technical data	Accessories	Downloads
-------------	----------------	-------------	-----------



### Features

- › Housing according to EN 50041
- › Plug connector SR6

### Approach direction



- › Figure  
Horizontal  
Can be adjusted in 90° steps

### Guard locking type

**VSM** Closed-circuit current principle, guard locking by spring force. Release by applying voltage to the solenoid.

## Switching element

538H Slow-action switching contact 2 NC⊖

## Approvals



## Mechanical values and environment

Housing material	Anodized die-cast alloy
Weight	Net 0,7 kg
Ambient temperature	-25 ... 80 °C
Degree of protection	IP65
Mechanical life	2 x 10 <sup>6</sup>
Contact material	Silver alloy, gold flashed
Switching principle	Slow-action switching contact
Solenoid alignment	3
Installation position	Any
Number of door position positively driven contacts	2
Connection	1 x Plug connector SR6 [1]
Approach speed	max.20 m/min
Actuation frequency	1200 1/h
Guard locking principle	Closed-circuit current principle
Locking force F <sub>max</sub>	2000 N
Locking force F <sub>Zh</sub>	1500 N
Retention force	35 N
Extraction force	40 N
Actuating force	45 N
Insertion depth	52 mm

## Electrical connection ratings

Rated thermal current I <sub>th</sub>	4 A [2]
Utilization category according to EN 60947-5-1	AC-15 4A 230V [3] DC-13 4A 24V [4]
Solenoid operating voltage	DC 24 V -15 ... 10
Short circuit protection according to IEC 60269-1	

	(Fuse)	4A gG [5]
Rated insulation voltage U <sub>i</sub>	AC/DC	250 V
Rated impulse withstand voltage U <sub>imp</sub>		2,5 kV
Switching voltage	Min. at 10mA	12 V
Switching current	Min. at 24V	1 mA

### Reliability values acc. to EN ISO 13849-1

	<b>Control of the guard locking</b>
Category	Depending on external control of guard locking
Performance Level	Depending on external control of guard locking
PFH <sub>D</sub>	Depending on external control of guard locking
	<b>Monitoring of the position of the safety guard</b>
B10 <sub>D</sub>	4,5 x 10 <sup>6</sup>

### in combination with Actuator BETAETIGER-Z-G

#### Mechanical values and environment

Overtravel	4 mm
------------	------

### in combination with Actuator BETAETIGER-Z-GN

#### Mechanical values and environment

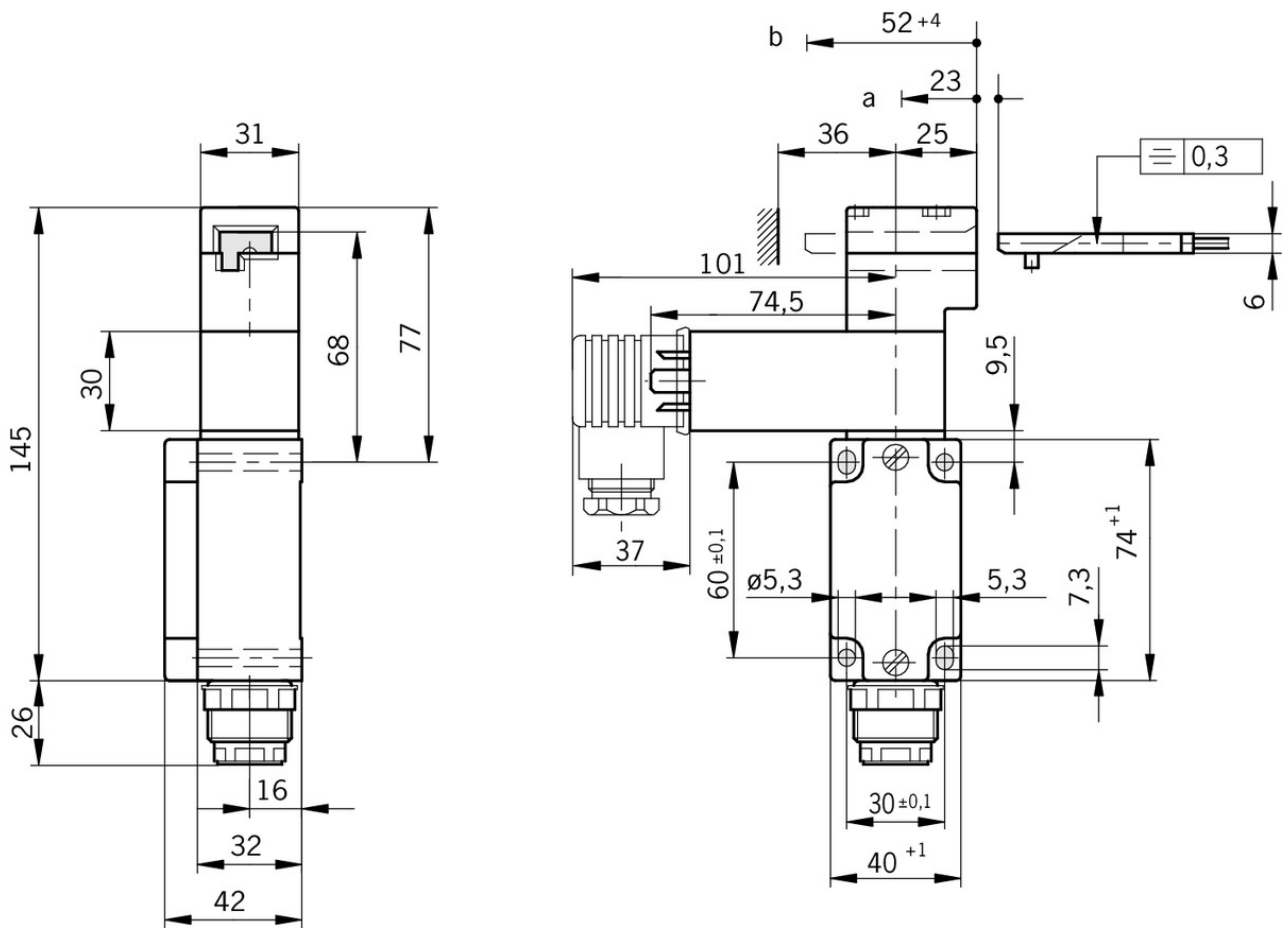
Overtravel	16 mm
------------	-------

[1] 6-pin + PE

[2, 3, 4] > 70° C => 2 A

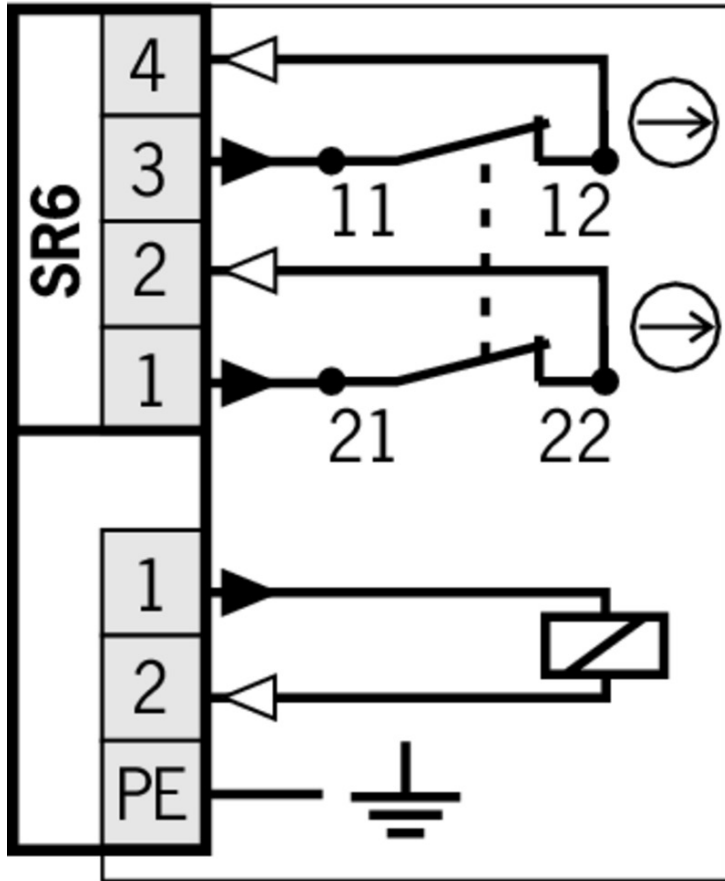
[5] > 70° C => 2 A gG

## Dimension drawing

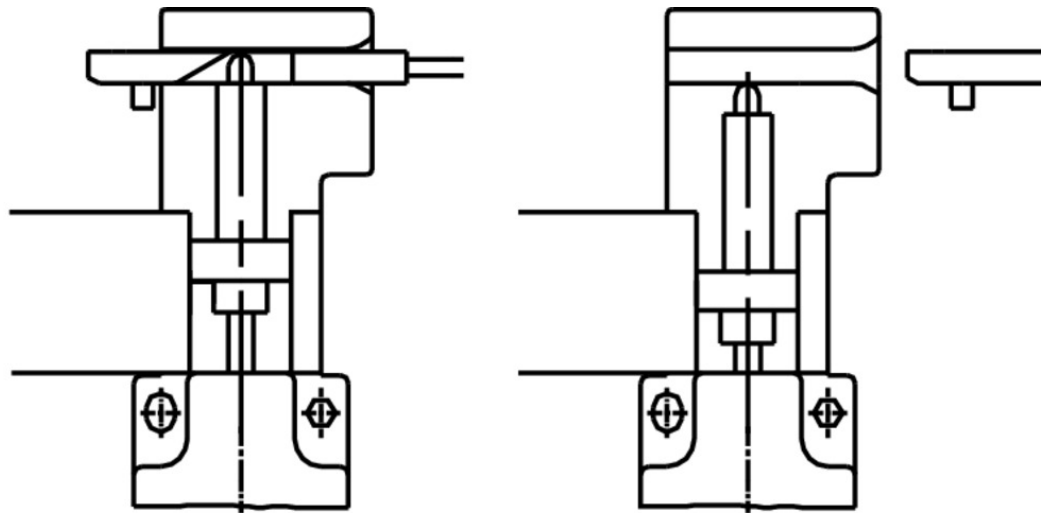


## Legende

- a* Travel without operation: actuator is in the guide slot, but function is not triggered.
- b* Switching operation completed: actuator must be inserted to this point to ensure reliable switching. The actuator must be withdrawn at least to point *a* for switching off.



## Switching functions



## Actuator

- Hinged actuator left for safety switches NZ.VZ, NZ.VZ.VS and TZ



**100407** RADIUSBETAETIGER-Z-L-C2194

Features

- › Two stainless safety screws per actuator
- › Smaller door radii



**074413** RADIUSBETAETIGER-Z-L/V25

Features

- › Two stainless safety screws per actuator
- › Packaging unit 25 pieces



**024298** RADIUSBETAETIGER-Z-L

Features

- › Two stainless safety screws per actuator

- Hinged actuator right for safety switches NZ.VZ, NZ.VZ.VS and TZ



**100406** RADIUSBETAETIGER-Z-R-C2194

Features

- › Two stainless safety screws per actuator
- › Smaller door radii



**074412** RADIUSBETAETIGER-Z-R/V25

✓ Features

- › Two stainless safety screws per actuator
- › Packaging unit 25 pieces



**024299** RADIUSBETAETIGER-Z-R

✓ Features

- › Two stainless safety screws per actuator

✓ Actuators for safety switches NZ.VZ, NZ.VZ.VS and TZ



**072251** BETAETIGER-Z-GN

✓ Features

- › Two stainless safety screws per actuator



**097436** BETAETIGER-Z-GME

✓ Features

- › Made of solid stainless steel
- › Two stainless safety screws per actuator



**016849** BETAETIGER-Z-G

✓ Features

- › Two stainless safety screws per actuator



**074411** BETAETIGER-Z-G/V25

✓ Features

- › Two stainless safety screws per actuator
- › Packaging unit 25 pieces

✓ Hinged actuator top for safety switches NZ.VZ, NZ.VZ.VS and TZ



**074415** RADIUSBETAETIGER-Z-O/V25

✓ Features

- › Two stainless safety screws per actuator
- › Packaging unit 25 pieces



**057950** RADIUSBETAETIGER-Z-O

✓ Features

- › Two stainless safety screws per actuator

✓ Hinged actuator bottom for safety switches NZ.VZ, NZ.VZ.VS and TZ



**074414** RADIUSBETAETIGER-Z-U/V25

✓ Features

- › Two stainless safety screws per actuator
- › Packaging unit 25 pieces



### **048850** RADIUSBETAETIGER-Z-U

#### ✓ Features

- › Two stainless safety screws per actuator
- 

## Bolt

---

### ✓ Bolt NZ-C for safety switches NZ.VZ and NZ.VZ.VS



### **057735** RIEGEL NZ-C

#### ✓ Features

- › Steel bolt
  - › For doors hinged on the left
  - › Can be locked in open position with padlocks
  - › Actuator and switch bracket included
- 

### ✓ Bolt NZ-A for safety switches NZ.VZ and NZ.VZ.VS



### **057734** RIEGEL NZ-A

#### ✓ Features

- › Steel bolt
  - › For doors hinged on the right
  - › Can be locked in open position with padlocks
  - › Actuator and switch bracket included
  - › Bolt is not allowed to be used in conjunction with an escape release.
- 

### ✓ Bolt NZ-A... for safety switches NZ.VZ and NZ.VZ.VS



### **083890** RIEGEL NZ-AB

#### ✓ Features

- › Steel bolt
  - › For doors hinged on the right
  - › Ball detent mechanism in closed position
  - › Can be locked in open position with padlocks
  - › Actuator and switch bracket included
- 



### **078455** RIEGEL NZ-AR2

#### ✓ Features

- › Steel bolt
  - › For doors hinged on the right
  - › Detent knob in open position
  - › Detent knob in closed position
  - › Can be locked in open position with padlocks
  - › Actuator and switch bracket included
- 

### ✓ Bolt NZ-C... for safety switches NZ.VZ and NZ.VZ.VS



### **078456** RIEGEL NZ-CR2

#### ✓ Features

- › Steel bolt
- › For doors hinged on the left



- › Detent knob in open position
- › Detent knob mechanism in closed position
- › Can be locked in open position with padlocks
- › Actuator and switch bracket included



#### **083892** RIEGEL NZ-CB

##### ✓ Features

- › Steel bolt
- › For doors hinged on the left
- › Ball detent mechanism in closed position
- › Can be locked in open position with padlocks
- › Actuator and switch bracket included

#### ✓ Bolts NZ/TZ-S1 and NZ/TZ-S2 for safety switches NZ.VZ, NZ.VZ.VS and TZ



#### **028357** RIEGEL NZ/TZ-S1

##### ✓ Features

- › Aluminum bolt
- › For doors hinged on the left or right. Cone grip bottom.
- › Spring catch in open position
- › Can be locked in open position with padlocks
- › Actuator included



#### **028359** RIEGEL NZ/TZ-S2

##### ✓ Features

- › Aluminum bolt
- › For doors hinged on the left or right. Cone grip top.
- › Spring catch in open position
- › Can be locked in open position with padlocks
- › Actuator included

#### ✓ Bolts NZ/TZ-S1/AF and NZ/TZ-S1/CF with escape release for safety switches NZ.VZ, NZ.VZ.VS and TZ with escape release



#### **079786** RIEGEL NZ/TZ-S1/AF

##### ✓ Features

- › Aluminum bolt
- › For doors hinged on the right
- › Escape release
- › Spring catch in open position
- › Can be locked in open position with padlocks
- › Actuator included



#### **079785** RIEGEL NZ/TZ-S1/CF

##### ✓ Features

- › Aluminum bolt
- › For doors hinged on the left
- › Escape release
- › Spring catch in open position
- › Can be locked in open position with padlocks
- › Actuator included

## Function expansion

---

### ▼ LED function display NZ



**029221** NGL060GR



**029220** NGL060RT

---

### ▼ Lockout mechanism NZ.VZ/TZ, 3 holes



**046730** SPERREINSATZ-Z-046730

#### ▼ Features

- › Prevents unintentional closing of the door
  - › Can be secured with padlocks
- 



**091305** SPERREINSATZ MIT KETTE

#### ▼ Features

- › Prevents unintentional closing of the door
  - › Can be secured with padlocks
- 

### ▼ Lockout mechanism NZ.VZ/TZ, 5 holes

**086538** SPERREINSATZ-Z-086538

#### ▼ Features

- › Prevents unintentional closing of the door
  - › Can be secured with padlocks
- 

### ▼ Protective plate NZ.VZ/TZ

**059136** SCHUTZBLECH NZ/TZ

---

## Mounting accessories

---

### ▼ Mounting plates EMP-SC for safety switches NM, NP...AS and NZ



**085753** EMP-SC

#### ▼ Features

- › For vertical and horizontal mounting of safety switches NM, NP...AS and NZ
- 

### ▼ Mounting plates EMP-B1 for actuators for safety switches CTP, TP...A, STA, STP, TX and TZ



**093457** EMP-B1

---

- ▼ Mounting plates EMP-B2 for actuators for safety switches CTP, TP...A, STA, STP, TX and TZ



**093458** EMP-B2

---

## Spare parts

- ▼ Replacement head NZ.VZ

**076250** BETAETIGUNGSKOPF NZVZ

---

## Connection material

- ▼ Plug connector SR6



**013176** SR6EF

- ▼ Features

- › Crimp contacts
  - › Coding shells
- 



**024999** SR6WFG11R

- ▼ Features

- › Socket crimp contacts
  - › 6-pin+PE
  - › Contact carrier can be adjusted in 7 outlet directions
- 

**087180** SR6AM2-M20

- ▼ Features

- › Crimp contacts
  - › Male socket
- 

**013178** SR6K

- ▼ Features

- › Coding for plug connector SR6
  - › Coding shells
- 

- ▼ Connection cable with plug connector SR6, 5m



**077632** C-M26F07-07X1,0PU05,0-MA-077632

- ▼ Features

- › Female plug SR6, 6-pin + PE
  - › Straight plug connector
  - › PUR cable
  - › Cable length 5 m
  - › With flying lead
- 

- ▼ Connection cable with plug connector SR6, 5m, angled



**077638** C-R22F07-07X1,0PU05,0-MA-077638

✓ Features

- › Female plug SR6, 6-pin + PE
  - › Angled plug connector
  - › PUR cable
  - › Cable length 5 m
  - › With flying lead
- 

✓ Connection cable with plug connector SR6, 10m



**077633** C-M26F07-07X1,0PU10,0-MA-077633

✓ Features

- › Female plug SR6, 6-pin + PE
  - › Straight plug connector
  - › PUR cable
  - › Cable length 10 m
  - › With flying lead
- 

✓ Connection cable with plug connector SR6, 10m, angled



**077639** C-R22F07-07X1,0PU10,0-MA-077639

✓ Features

- › Female plug SR6, 6-pin + PE
  - › Angled plug connector
  - › PUR cable
  - › Cable length 10 m
  - › With flying lead
- 

✓ Connection cable with plug connector SR6, 15m



**077634** C-M26F07-07X1,0PU15,0-MA-077634

✓ Features

- › Female plug SR6, 6-pin + PE
  - › Straight plug connector
  - › PUR cable
  - › Cable length 15 m
  - › With flying lead
- 

✓ Connection cable with plug connector SR6, 15m, angled



**077640** C-R22F07-07X1,0PU15,0-MA-077640

✓ Features

- › Female plug SR6, 6-pin + PE
  - › Angled plug connector
  - › PUR cable
  - › Cable length 15 m
  - › With flying lead
- 

✓ Connection cable with plug connector SR6, 20m

**098128** C-M26F07-07X1,0PU20,0-MA-098128

✓ Features



- › Female plug SR6, 6-pin + PE
- › Straight plug connector
- › PUR cable
- › Cable length 20 m
- › With flying lead

## ▼ Solenoid plug for safety switch NZ.VZ.VS

**028345** STECKVERBINDER FUER MAGNETVERRIEG.

### ▼ Features

- › Without rectifier for the connection of DC.

## Instructions

### ▼ Istruzioni di impiego Finecorsa di sicurezza NZ.VZ-...VS

	Doc. no.	Version	Language	Download
Betriebsanleitung Sicherheitsschalter NZ.VZ-...VS	094066	07-08/16		2.2 MB
Manual de instrucciones Interruptor de seguridad NZ.VZ-...VS				
Mode d'emploi Interrupteur de sécurité NZ.VZ-...VS				
Operating Instructions Safety Switch NZ.VZ-...VS				
Istruzioni di impiego Finecorsa di sicurezza NZ.VZ-...VS	094066	07-08/16		0.6 MB
Návod na prevádzku Bezpečnostný spínač NZ.VZ-...VS	094066	07-08/16		0.6 MB

## Catalogs

















### ▼ Sicherheitsschalter mit Metallgehäuse Safety Switches with Metal Housing Bezpečnostní spínače s kovovým pouzdrém Interrupteurs de sécurité avec boîtier métallique 金属壳体 的安全开关 Interruptores de seguridad con carcasa metálica

	Doc. no.	Version	Language	Download
Sicherheitsschalter mit Metallgehäuse	100319	11-03/18		7.9 MB
Interrupteurs de sécurité avec boîtier métallique	100676	11-03/18		7.9 MB
Interruptores de seguridad con carcasa metálica	104856	11-03/18		14.0 MB
Safety Switches with Metal Housing	100369	11-03/18		7.9 MB
Bezpečnostní spínače s kovovým pouzdrém	121650	11-03/18		7.9 MB
金属壳体 的安全开关	102453	11-03/18		8.2 MB

## Declaration of conformity

### ▼ EU prohlášení o shodě

Doc. no.	Version	Language	Download
----------	---------	----------	----------

EU-Konformitätserklärung	2077153	25-02/17		 0.3 MB
Declaración UE de conformidad				
Déclaration UE de conformité				
Dichiarazione di conformità				
EU declaration of conformity				
EU prohlášení o shodě	2077153	25-02/17		 0.5 MB
EU-overensstemmelseserklæring				
Δήλωση συμμόρφωσης της ΕΕ				
EU-vaatimustenmukaisuusvakuutus				
EU-típusbizonyítvány				
EU-conformiteitsverklaring				
Deklaracja zgodności UE				
Declaração de Conformidade UE				
Declarația de conformitate UE				
EÚ vyhlásenie o zhode				

### CAD data

CAD data for this item on TraceParts