

ITEM 090348 NZ1VZ-538E3VSE07L110-M

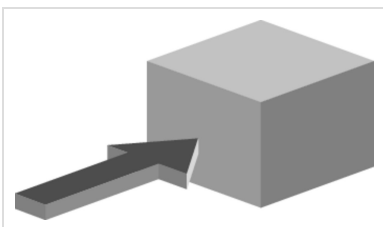
Description	Technical data	Accessories	Downloads
-------------	----------------	-------------	-----------



### Features

- › Housing according to EN 50041
- › Cable entry M20 x 1.5
- › LED indicator

### Approach direction



- › Figure  
Horizontal  
Can be adjusted in 90° steps

### LED function display

A function display is available for the following voltage range:

- › AC 110 V±15% red

## Guard locking type

**VSE** Open-circuit current principle, guard locking by applying voltage to the solenoid. Release by spring force.

## Switching element

**538H** Slow-action switching contact 2 NC $\ominus$

## Approvals



## Mechanical values and environment

Housing material	Anodized die-cast alloy
Weight	Net 0,7 kg
Ambient temperature	-25 ... 80 °C
Degree of protection	IP65
Mechanical life	$2 \times 10^6$
Contact material	Silver alloy, gold flashed
Switching principle	Slow-action switching contact
Solenoid alignment	3
Installation position	Any
Number of door position positively driven contacts	2
Connection	1 x M20 x 1.5
Approach speed	max.20 m/min
Actuation frequency	1200 1/h
Guard locking principle	Open-circuit current principle
Locking force $F_{max}$	2000 N
Locking force $F_{Zh}$	1500 N
Retention force	35 N
Extraction force	40 N
Actuating force	45 N
Insertion depth	52 mm

## Electrical connection ratings

Rated thermal current $I_{th}$	4 A
Utilization category according to EN 60947-5-1	AC-15 4A 230V

	DC-13	4A 24V
Solenoid operating voltage	AC	110 V -15 ... 10
Short circuit protection according to IEC 60269-1	(Fuse)	4A gG
Rated insulation voltage U <sub>i</sub>	AC/DC	250 V
Rated impulse withstand voltage U <sub>imp</sub>		2,5 kV
Switching voltage	Min. at 10mA	12 V
Switching current	Min. at 24V	1 mA
Connection cross-section		0,34 ... 0,75 mm <sup>2</sup>
Display module	AC	110 V Red

### Reliability values acc. to EN ISO 13849-1

	Control of the guard locking
Category	Depending on external control of guard locking
Performance Level	Depending on external control of guard locking
PFH <sub>D</sub>	Depending on external control of guard locking
	Monitoring of the position of the safety guard
B10 <sub>D</sub>	4,5 x 10 <sup>6</sup>

### in combination with Actuator BETAETIGER-Z-G

#### Mechanical values and environment

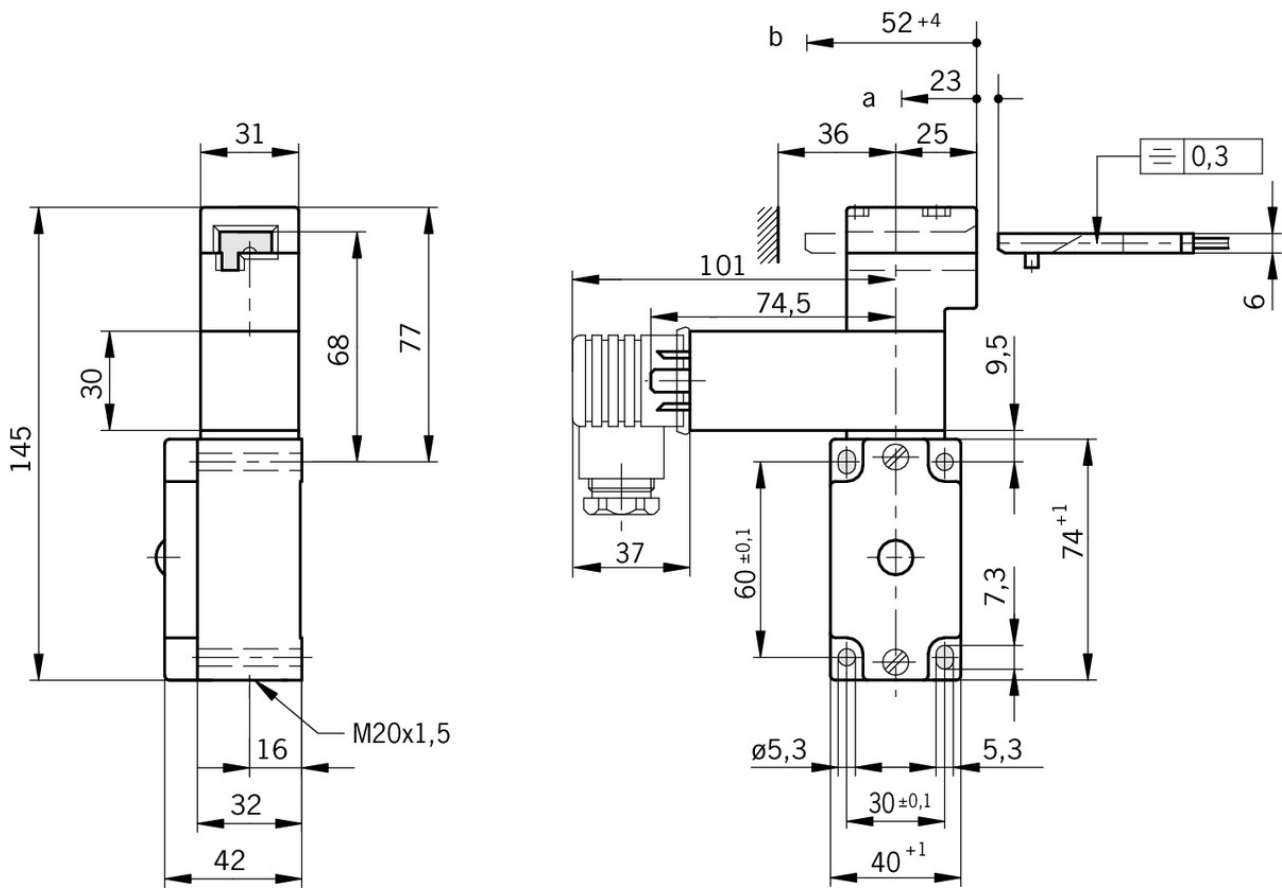
Overtravel	4 mm
------------	------

### in combination with Actuator BETAETIGER-Z-GN

#### Mechanical values and environment

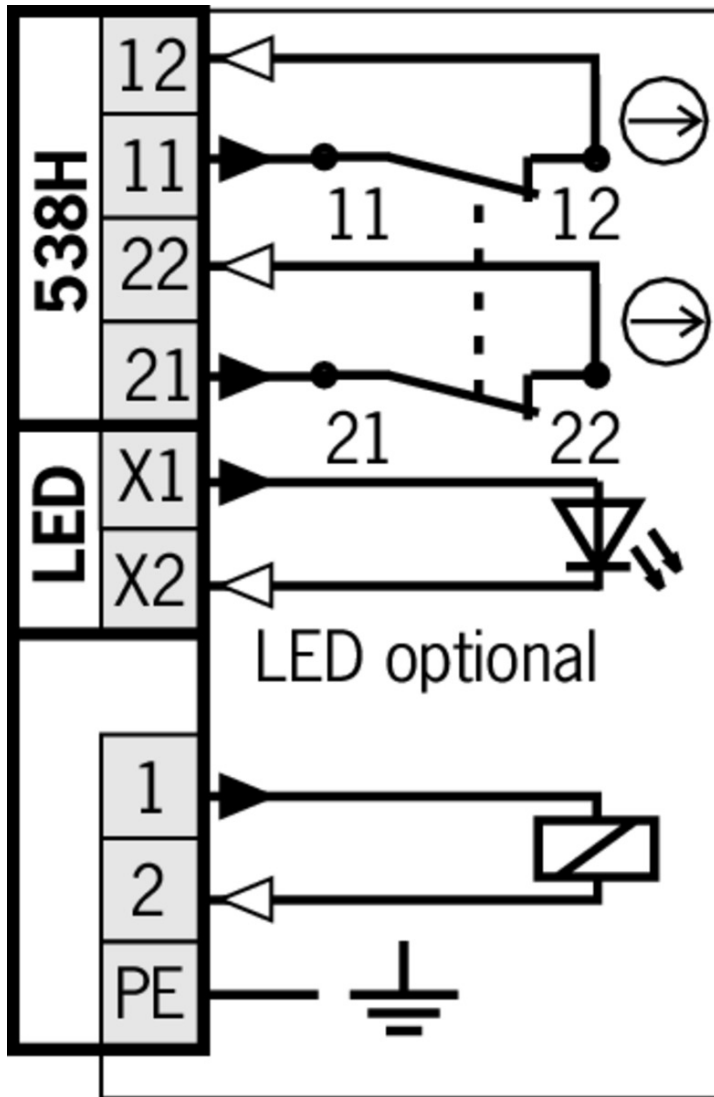
Overtravel	16 mm
------------	-------

## Dimension drawing

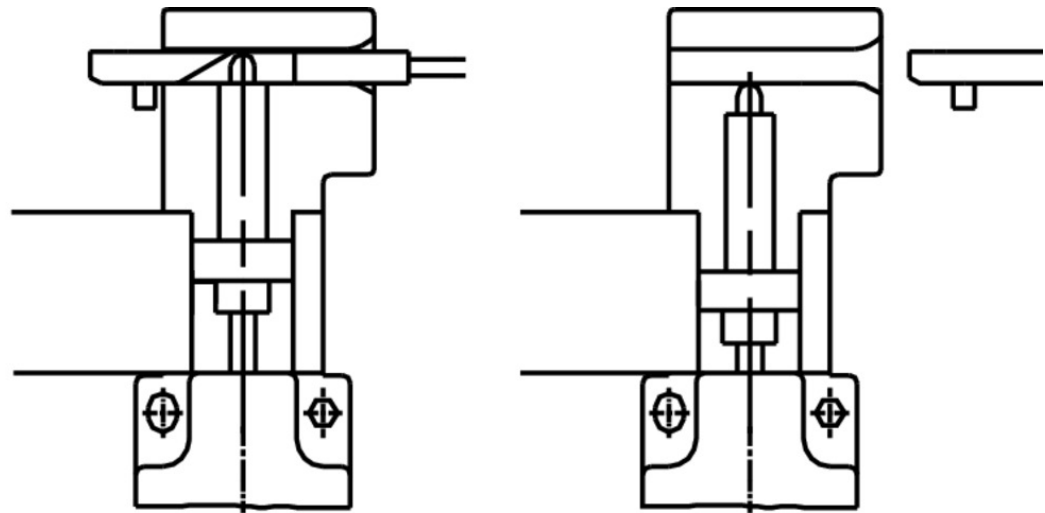


## Legende

- a* Travel without operation: actuator is in the guide slot, but function is not triggered.
- b* Switching operation completed: actuator must be inserted to this point to ensure reliable switching. The actuator must be withdrawn at least to point *a* for switching off.



## Switching functions



## Actuator

- Actuators for safety switches NZ.VZ, NZ.VZ.VS and TZ



### 016849 BETAETIGER-Z-G

#### Features

- Two stainless safety screws per actuator



### 074411 BETAETIGER-Z-G/V25

#### Features

- Two stainless safety screws per actuator
- Packaging unit 25 pieces



### 097436 BETAETIGER-Z-GME

#### Features

- Made of solid stainless steel
- Two stainless safety screws per actuator



### 072251 BETAETIGER-Z-GN

#### Features

- Two stainless safety screws per actuator

- Hinged actuator bottom for safety switches NZ.VZ, NZ.VZ.VS and TZ



**074414** RADIUSBETAETIGER-Z-U/V25

✓ Features

- › Two stainless safety screws per actuator
- › Packaging unit 25 pieces



**048850** RADIUSBETAETIGER-Z-U

✓ Features

- › Two stainless safety screws per actuator

✓ Hinged actuator top for safety switches NZ.VZ, NZ.VZ.VS and TZ



**057950** RADIUSBETAETIGER-Z-O

✓ Features

- › Two stainless safety screws per actuator



**074415** RADIUSBETAETIGER-Z-O/V25

✓ Features

- › Two stainless safety screws per actuator
- › Packaging unit 25 pieces

✓ Hinged actuator right for safety switches NZ.VZ, NZ.VZ.VS and TZ



**100406** RADIUSBETAETIGER-Z-R-C2194

✓ Features

- › Two stainless safety screws per actuator
- › Smaller door radii



**074412** RADIUSBETAETIGER-Z-R/V25

✓ Features

- › Two stainless safety screws per actuator
- › Packaging unit 25 pieces



**024299** RADIUSBETAETIGER-Z-R

✓ Features

- › Two stainless safety screws per actuator

✓ Hinged actuator left for safety switches NZ.VZ, NZ.VZ.VS and TZ



**100407** RADIUSBETAETIGER-Z-L-C2194

✓ Features

- › Two stainless safety screws per actuator
- › Smaller door radii



**074413** RADIUSBETAETIGER-Z-L/V25

✓ Features

- › Two stainless safety screws per actuator
- › Packaging unit 25 pieces



### **024298** RADIUSBETAETIGER-Z-L

#### ✓ Features

- › Two stainless safety screws per actuator
- 

## Bolt

---

### ✓ Bolt NZ-A... for safety switches NZ.VZ and NZ.VZ.VS



### **078455** RIEGEL NZ-AR2

#### ✓ Features

- › Steel bolt
  - › For doors hinged on the right
  - › Detent knob in open position
  - › Detent knob in closed position
  - › Can be locked in open position with padlocks
  - › Actuator and switch bracket included
- 



### **083890** RIEGEL NZ-AB

#### ✓ Features

- › Steel bolt
  - › For doors hinged on the right
  - › Ball detent mechanism in closed position
  - › Can be locked in open position with padlocks
  - › Actuator and switch bracket included
- 

### ✓ Bolt NZ-C... for safety switches NZ.VZ and NZ.VZ.VS



### **078456** RIEGEL NZ-CR2

#### ✓ Features

- › Steel bolt
  - › For doors hinged on the left
  - › Detent knob in open position
  - › Detent knob mechanism in closed position
  - › Can be locked in open position with padlocks
  - › Actuator and switch bracket included
- 



### **083892** RIEGEL NZ-CB

#### ✓ Features

- › Steel bolt
  - › For doors hinged on the left
  - › Ball detent mechanism in closed position
  - › Can be locked in open position with padlocks
  - › Actuator and switch bracket included
- 

### ✓ Bolt NZ-C for safety switches NZ.VZ and NZ.VZ.VS



### **057735** RIEGEL NZ-C

#### ✓ Features

- › Steel bolt
- › For doors hinged on the left
- › Can be locked in open position with padlocks



- › Actuator and switch bracket included
- 

✓ Bolt NZ-A for safety switches NZ.VZ and NZ.VZ.VS



**057734** RIEGEL NZ-A

✓ Features

- › Steel bolt
  - › For doors hinged on the right
  - › Can be locked in open position with padlocks
  - › Actuator and switch bracket included
  - › Bolt is not allowed to be used in conjunction with an escape release.
- 

✓ Bolts NZ/TZ-S1/AF and NZ/TZ-S1/CF with escape release for safety switches NZ.VZ, NZ.VZ.VS and TZ with escape release



**079786** RIEGEL NZ/TZ-S1/AF

✓ Features

- › Aluminum bolt
  - › For doors hinged on the right
  - › Escape release
  - › Spring catch in open position
  - › Can be locked in open position with padlocks
  - › Actuator included
- 



**079785** RIEGEL NZ/TZ-S1/CF

✓ Features

- › Aluminum bolt
  - › For doors hinged on the left
  - › Escape release
  - › Spring catch in open position
  - › Can be locked in open position with padlocks
  - › Actuator included
- 

✓ Bolts NZ/TZ-S1 and NZ/TZ-S2 for safety switches NZ.VZ, NZ.VZ.VS and TZ



**028357** RIEGEL NZ/TZ-S1

✓ Features

- › Aluminum bolt
  - › For doors hinged on the left or right. Cone grip bottom.
  - › Spring catch in open position
  - › Can be locked in open position with padlocks
  - › Actuator included
- 



**028359** RIEGEL NZ/TZ-S2

✓ Features

- › Aluminum bolt
  - › For doors hinged on the left or right. Cone grip top.
  - › Spring catch in open position
  - › Can be locked in open position with padlocks
  - › Actuator included
-

## Mounting accessories

---

- ▼ Mounting plates EMP-SC for safety switches NM, NP...AS and NZ



**085753** EMP-SC

- ▼ Features

- › For vertical and horizontal mounting of safety switches NM, NP...AS and NZ
- 

- ▼ Mounting plates EMP-B1 for actuators for safety switches CTP, TP...A, STA, STP, TX and TZ



**093457** EMP-B1

- ▼ Mounting plates EMP-B2 for actuators for safety switches CTP, TP...A, STA, STP, TX and TZ



**093458** EMP-B2

---

## Function expansion

---

- ▼ Lockout mechanism NZ.VZ/TZ, 3 holes



**046730** SPERREINSATZ-Z-046730

- ▼ Features

- › Prevents unintentional closing of the door
  - › Can be secured with padlocks
- 



**091305** SPERREINSATZ MIT KETTE

- ▼ Features

- › Prevents unintentional closing of the door
  - › Can be secured with padlocks
- 

- ▼ Lockout mechanism NZ.VZ/TZ, 5 holes

**086538** SPERREINSATZ-Z-086538

- ▼ Features

- › Prevents unintentional closing of the door
  - › Can be secured with padlocks
- 

- ▼ Protective plate NZ.VZ/TZ

**059136** SCHUTZBLECH NZ/TZ

---

- ▼ LED function display NZ



**029220** NGLE060RT

---



**029221** NGL060GR

## Spare parts

▼ Replacement head NZ.VZ

**076250** BETAETIGUNGSKOPF NZVZ

## Connection material

▼ Cable glands M20x1.5



**077683** EKVM20/06



**077684** EKVM20/09

▼ Solenoid plug for safety switch NZ.VZ.VS

**028338** STECKVERBINDER M.GLEICHR.F.MAGNETV.

▼ Features

› With rectifier for the connection of AC 110 V - AC 230 V.

## Instructions

▼ Istruzioni di impiego Finecorsa di sicurezza NZ.VZ-...VS

	Doc. no.	Version	Language	Download
Betriebsanleitung Sicherheitsschalter NZ.VZ-...VS	094066	07-08/16		2.2 MB
Manual de instrucciones Interruptor de seguridad NZ.VZ-...VS				
Mode d'emploi Interrupteur de sécurité NZ.VZ-...VS				
Operating Instructions Safety Switch NZ.VZ-...VS				
Istruzioni di impiego Finecorsa di sicurezza NZ.VZ-...VS	094066	07-08/16		0.6 MB
Návod na prevádzku Bezpečnostný spínač NZ.VZ-...VS	094066	07-08/16		0.6 MB

## Declaration of conformity

▼ EU prohlášení o shodě

	Doc. no.	Version	Language	Download
EU-Konformitätserklärung Declaración UE de conformidad Déclaration UE de conformité Dichiarazione di conformità EU declaration of conformity	2077153	25-02/17	    	 0.3 MB
EU prohlášení o shodě EU-overensstemmelseserklæring Δήλωση συμμόρφωσης της ΕΕ EU-vaatimustenmukaisuusvakuutus EU-típusbizonyítvány EU-conformiteitsverklaring Deklaracja zgodności UE Declaração de Conformidade UE Declarația de conformitate UE EÚ vyhlásenie o zhode	2077153	25-02/17	         	 0.5 MB

### CAD data

CAD data for this item on TraceParts