

ITEM 059622 BLINDVERSCHLUSS NOTHALT HBE/HBL

Description	Technical data	Accessories	Downloads
-------------	----------------	-------------	-----------



Features

- › Electro-anodized aluminum
- › black or silver
- › Rear is coated so as to be self-adhesive

Components included in the set

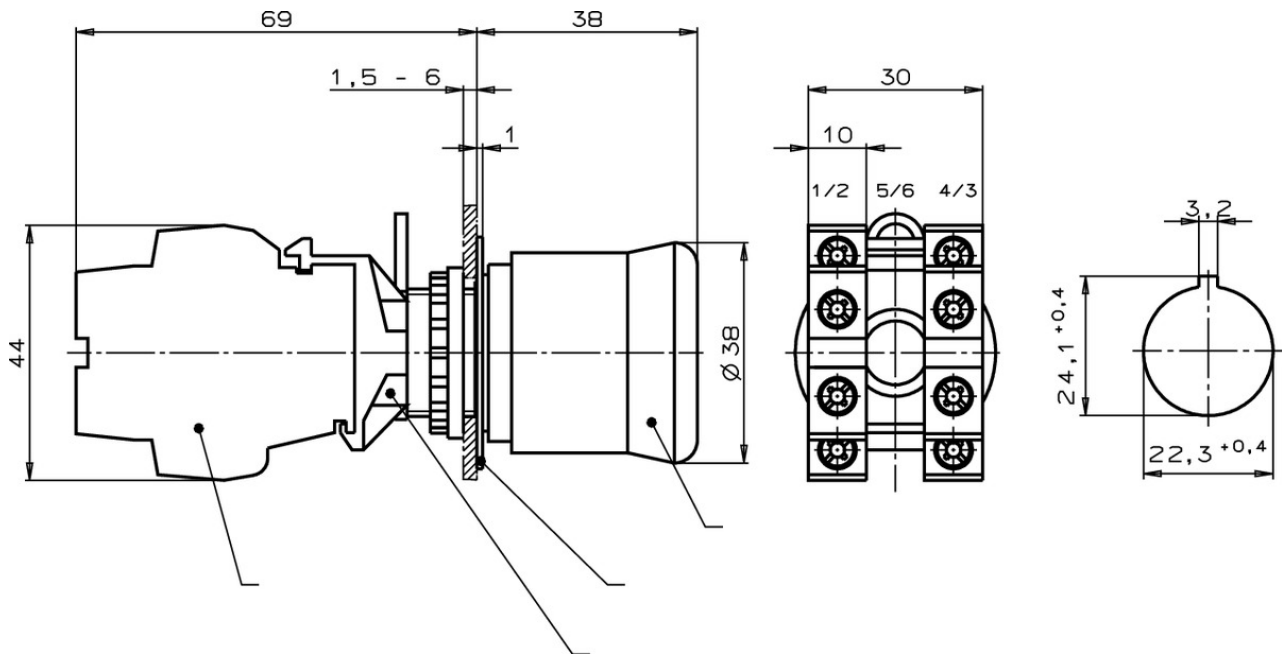
Supplied accessories

Thread ring

Miscellaneous







Additional feature	Round
Color	gray

Dimension drawing



Catalogs

- Handbediengeräte/Handräder Hand-Held Pendant Stations/Handwheels Pupitres portables/Manivelles

	Doc. no.	Version	Language	Download
Handbediengeräte/Handräder	098619	08-09/17		 3.0 MB
Pupitres portables/Manivelles	111529	08-09/17		 3.0 MB
Hand-Held Pendant Stations/Handwheels	099443	08-09/17		 3.0 MB