

ITEM 095175 CEM-A-BH10

Description	Technical data	Accessories	Downloads
-------------	----------------	-------------	-----------



Features

- › Locking force 1000 N
- › Two safety screws M5x16 included

Approvals

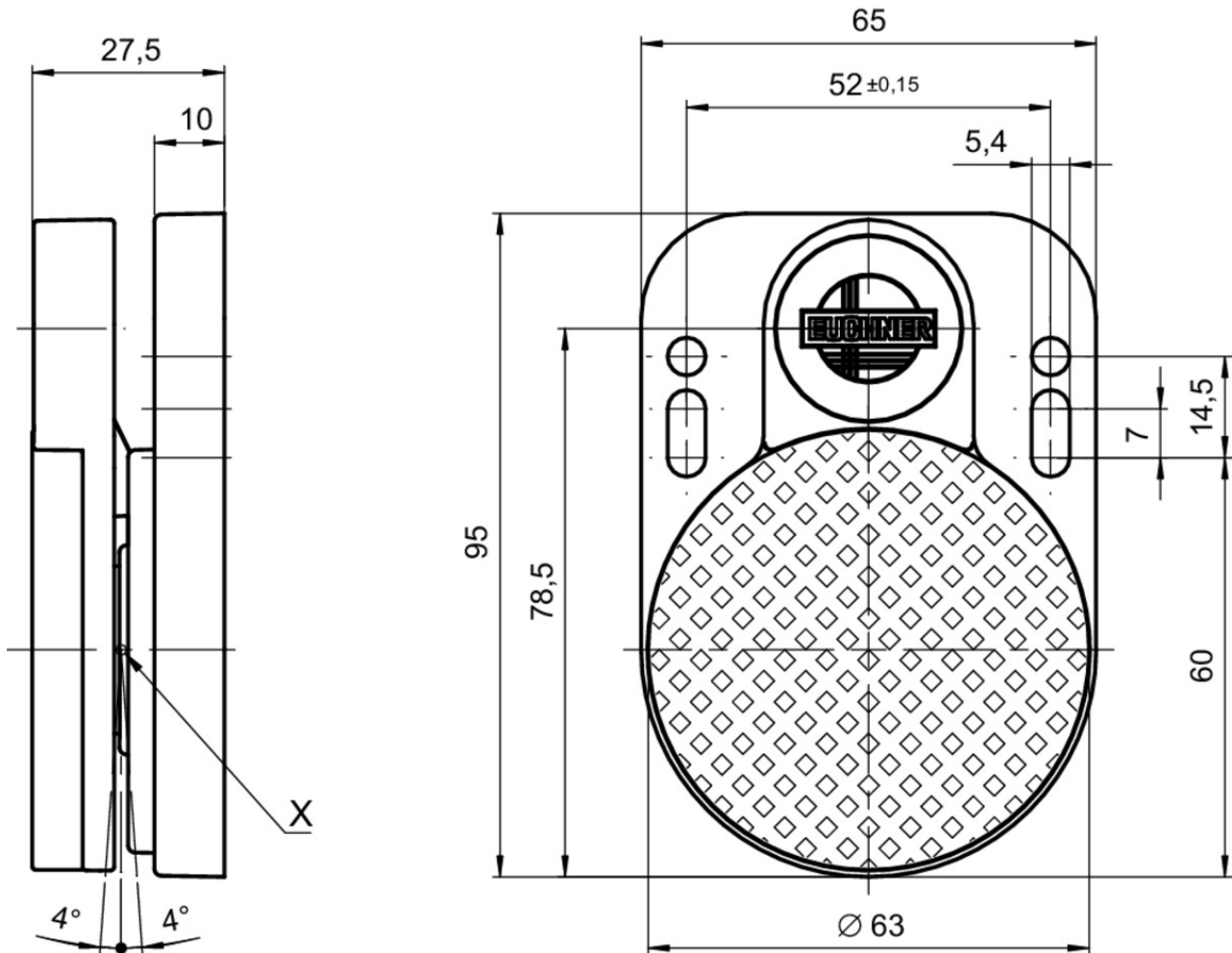


Mechanical values and environment

Material	Anchor plate	Steel, nickel-plated
	Actuator installed	Plastic (PPS)
Housing material		Die-cast aluminum
Weight		
	Net	0,3 kg

Ambient temperature	-25 ... 50 °C
Degree of protection	IP67
Installation position	Active face opposite read head
Angle offset	-4 ... +4 °
Method of operation	Inductive

Dimension drawing



Mounting accessories

▼ Safety screws for actuators, M5 x 16









073456 M5X16/V100

▼ Features

- › Safety screws M5 x 16
- › Packaging unit 100 pieces

Catalogs

- ✓ Transpondercodierte Sicherheitssysteme mit externer Auswertung Transponder-coded safety systems with external evaluation Sistemas de seguridad con codificación por transponder y evaluación externa Systèmes de sécurité à codage par transpondeur avec analyse externe

	Doc. no.	Version	Language	Download
Transpondercodierte Sicherheitssysteme mit externer Auswertung	127596	02-01/18		 3.1 MB
Systèmes de sécurité à codage par transpondeur avec analyse externe	137968	02-01/18		 3.0 MB
Sistemas de seguridad con codificación por transponder y evaluación externa	139969	02-01/18		 3.0 MB
Transponder-coded safety systems with external evaluation	127597	02-01/18		 3.0 MB

CAD data

CAD data for this item on TraceParts