

**ITEM 096327 CET-A-BWK-50X**

Description	Technical data	Accessories	Downloads
-------------	----------------	-------------	-----------



**Features**

- › Actuator for read head/safety switch CET
- › Four safety screws M5x16 included

**Approvals**



**Mechanical values and environment**

Material	Stainless steel
Weight	Net 0,25 kg
Ambient temperature	-20 ... 55 °C
Degree of protection	

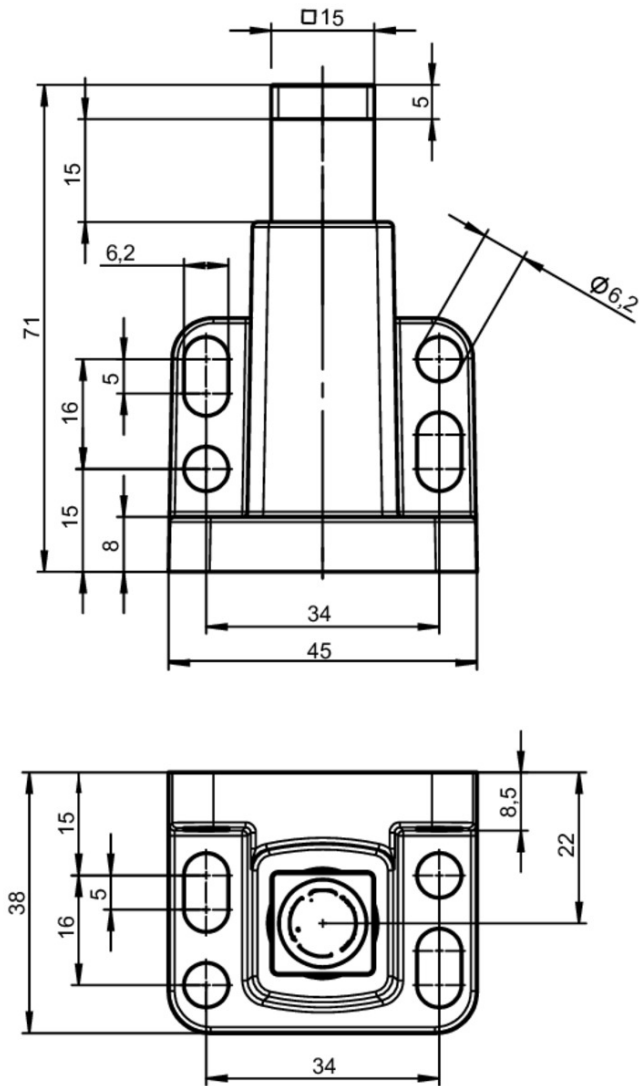
Degree of protection of the transponder	IP67
Mechanical life	$1 \times 10^6$
Installation position	Any [1]
Locking force $F_{max}$	6500 N
Locking force $F_{Zh}$	5000 N

### Electrical connection ratings

Power supply	Inductive via read head
--------------	-------------------------

[1] Active face opposite read head

### Dimension drawing



Mounting accessories

▼ Safety screws for actuators, M5 x 16

**073456** M5X16/V100

▼ Features

- › Safety screws M5 x 16
  - › Packaging unit 100 pieces
- 

▼ Mounting plate EMP-B-... for actuator CET



**106694** EMP-B-CET

▼ Features

- › Mounting plate for actuator CET for hinged or sliding doors
  - › Suitable for aluminum profiles 40 ... 45 mm
  - › Horizontal and vertical mounting
  - › Made of aluminum
- 

## Function expansion

---

▼ Lockout mechanism for CET actuator



**122609** AE-L-CET-122609

▼ Features

- › Prevents unintentional closing of the door
  - › Can be secured with padlocks
  - › Not suitable in combination with cover AM-C for actuator CET
- 



**156429** AE-L-CET-156429

▼ Features

- › Prevents unintentional closing of the door
  - › Can be secured with padlocks
- 

▼ Cover for actuator CET



**124721** AM-C-124721

▼ Features

- › Cover for actuator CET
  - › Horizontal fastening option on the actuator
  - › Mounting using 4 screws M5x16 (included with the actuator)
  - › Not suitable in combination with lockout bar for actuator CET
- 



**124979** AM-C-124979

▼ Features

- › Cover for actuator CET
  - › Horizontal and vertical fastening option on the actuator
  - › Mounting using 4 screws M5x16 (included with the actuator)
  - › Not suitable in combination with lock out bar for actuator CET
- 

▼ Holder for lockout mechanism CET actuator

**156338** Y-CHN-A1-156338



#### Features

- › Holder (incl. wire rope) for lockout bar CET

#### Lockout bar and holder for CET actuators



#### 155865 AE-SET-LCHN-A1-155865

#### Features

- › Prevents unintentional closing of the door
- › Can be secured with padlocks

## Catalogs

- Transpondercodierte Sicherheitsschalter - Verriegelungseinrichtungen und Zuhaltungen  
 Transponder-coded safety switches - Interlocking devices and guard locking devices  
 Interruptores de seguridad con codificación por transponder - Dispositivos de enclavamiento y bloqueos  
 Interrupteurs de sécurité à codage par transpondeur - Dispositifs de verrouillage et interverrouillages

	Doc. no.	Version	Language	Download
Transpondercodierte Sicherheitsschalter - Verriegelungseinrichtungen und Zuhaltungen	127594	02-01/18		5.2 MB
Interrupteurs de sécurité à codage par transpondeur - Dispositifs de verrouillage et interverrouillages	137558	02-01/18		5.2 MB
Interruptores de seguridad con codificación por transponder - Dispositivos de enclavamiento y bloqueos	137560	02-01/18		5.2 MB
Transponder-coded safety switches - Interlocking devices and guard locking devices	127595	02-01/18		5.1 MB

- Transpondercodierte Sicherheitssysteme mit externer Auswertung  
 Transponder-coded safety systems with external evaluation  
 Sistemas de seguridad con codificación por transponder y evaluación externa  
 Systèmes de sécurité à codage par transpondeur avec analyse externe

	Doc. no.	Version	Language	Download
Transpondercodierte Sicherheitssysteme mit externer Auswertung	127596	02-01/18		3.1 MB
Systèmes de sécurité à codage par transpondeur avec analyse externe	137968	02-01/18		3.0 MB
Sistemas de seguridad con codificación por transponder y evaluación externa	139969	02-01/18		3.0 MB
Transponder-coded safety systems with external evaluation	127597	02-01/18		3.0 MB

## CAD data

CAD data for this item on TraceParts