

ITEM 092501 RPS-PS/V5

Description	Technical data	Accessories	Downloads
-------------	----------------	-------------	-----------



Features

- › Pulley set consisting of rope pulley block and pulley support

Approvals



Mechanical values and environment

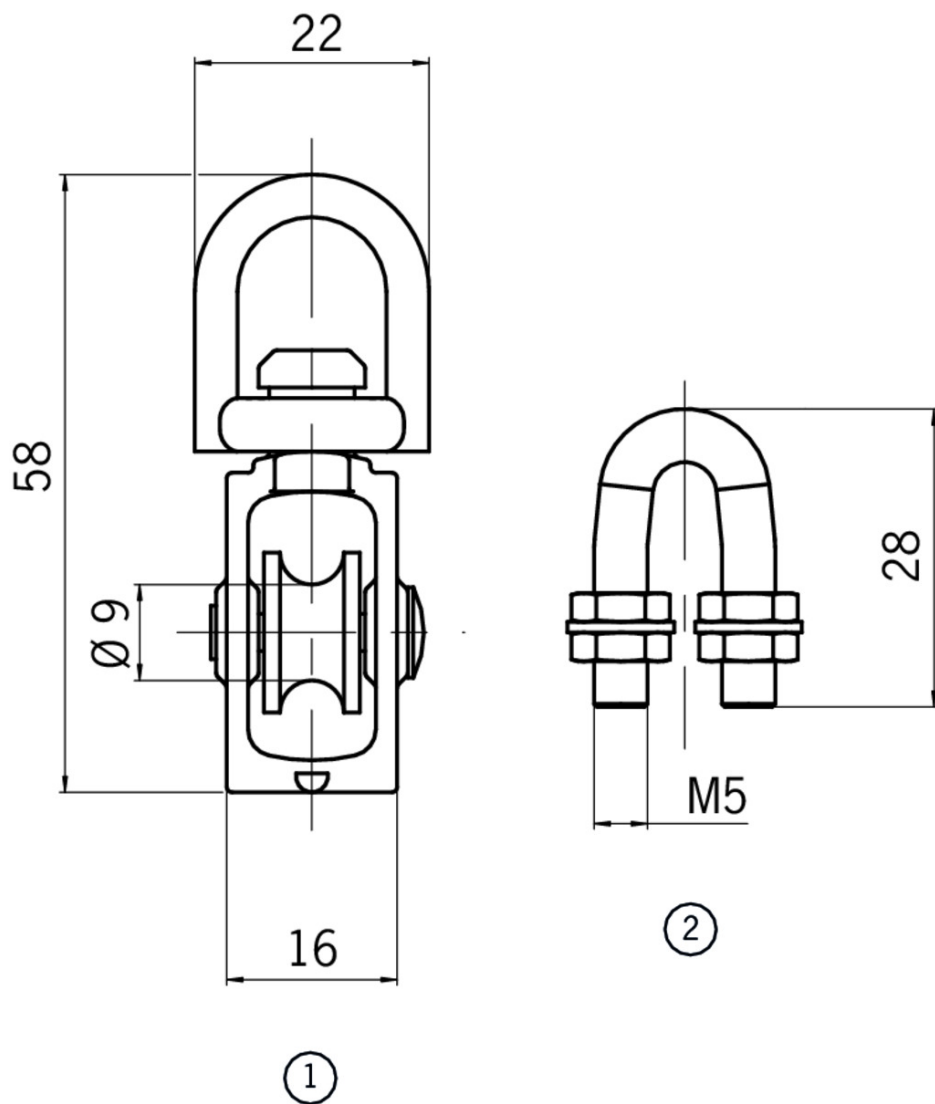
Material	Rope pulley block	Die-cast zinc
	Mounting	Galvanized steel
	Roller	Polyamide
Rope diameter	2 ... 5 mm	
Roller diameter	9 mm	

Miscellaneous

Packaging unit

5 pcs.

Dimension drawing











Legende

- 1 Rope pulley block
- 2 Pulley bracket

Catalogs

✓ Not-Halt-Geräte/Seilzugschalter Emergency Stop Devices/Rope Pull Switches Dispositifs d'arrêt d'urgence/interrupteurs à câble Dispositivos de parada de emergencia / Interruptores de accionamiento por cable

	Doc. no.	Version	Language	Download
Not-Halt-Geräte/Seilzugschalter	106210	06-06/16		 1.9 MB
Dispositifs d'arrêt d'urgence/interrupteurs à câble	116529	06-06/16		 1.9 MB
Dispositivos de parada de emergencia / Interruptores de accionamiento por cable	116530	06-06/16		 1.9 MB
Emergency Stop Devices/Rope Pull Switches	116448	06-06/16		 1.9 MB

CAD data

CAD data for this item on TraceParts