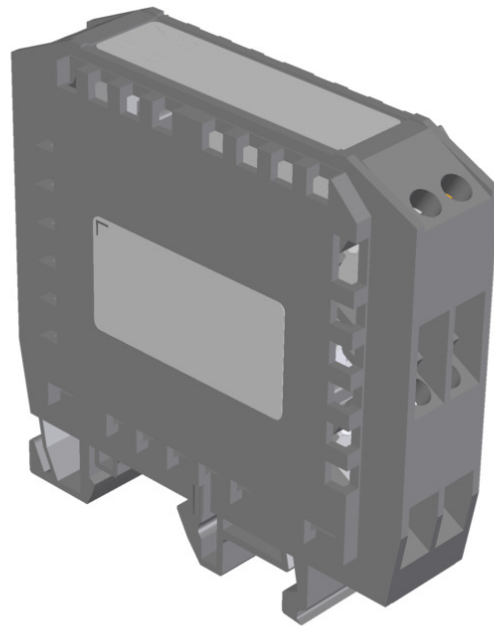


**ITEM 096945 PM-SCL-096945**

Description	Technical data	Accessories	Downloads
-------------	----------------	-------------	-----------



**Features**

Very high currents are produced on power up if capacitive loads are switched; these currents cause increased wear on electromagnetic switching contacts. The PM-SCL module limits the inrush current for approx. 100 ms and protects the switching contacts.

**Mechanical values and environment**

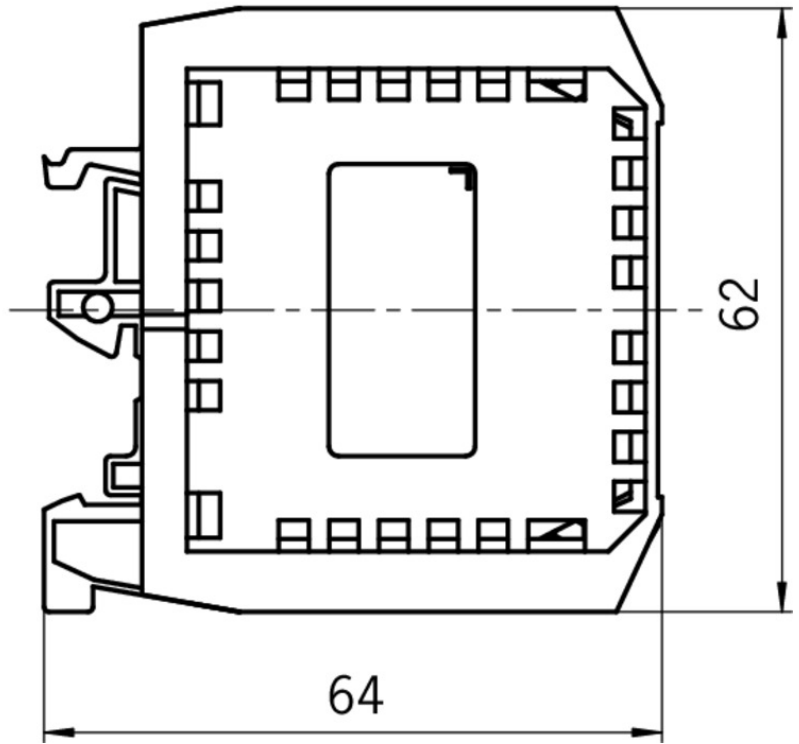
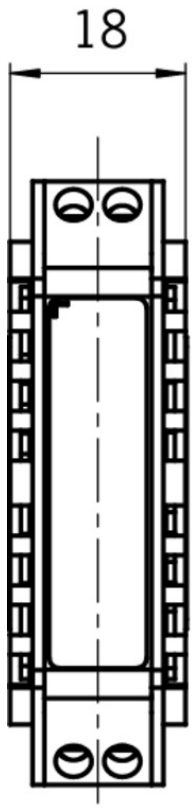
Housing material	Polyamide UL 94.V2
Weight	Net 0,04 kg
Ambient temperature	
At $U_B = DC 24 V$	-20 ... 55 °C
Atmospheric humidity	
Not condensing	max.80 % rH
Degree of protection	IP20
Mounting method	
	Mounting rail 35mm according to DIN EN 60715 TH35

	Mounting rail 32mm according to DIN EN 60715 G32
Connection	Screw terminals

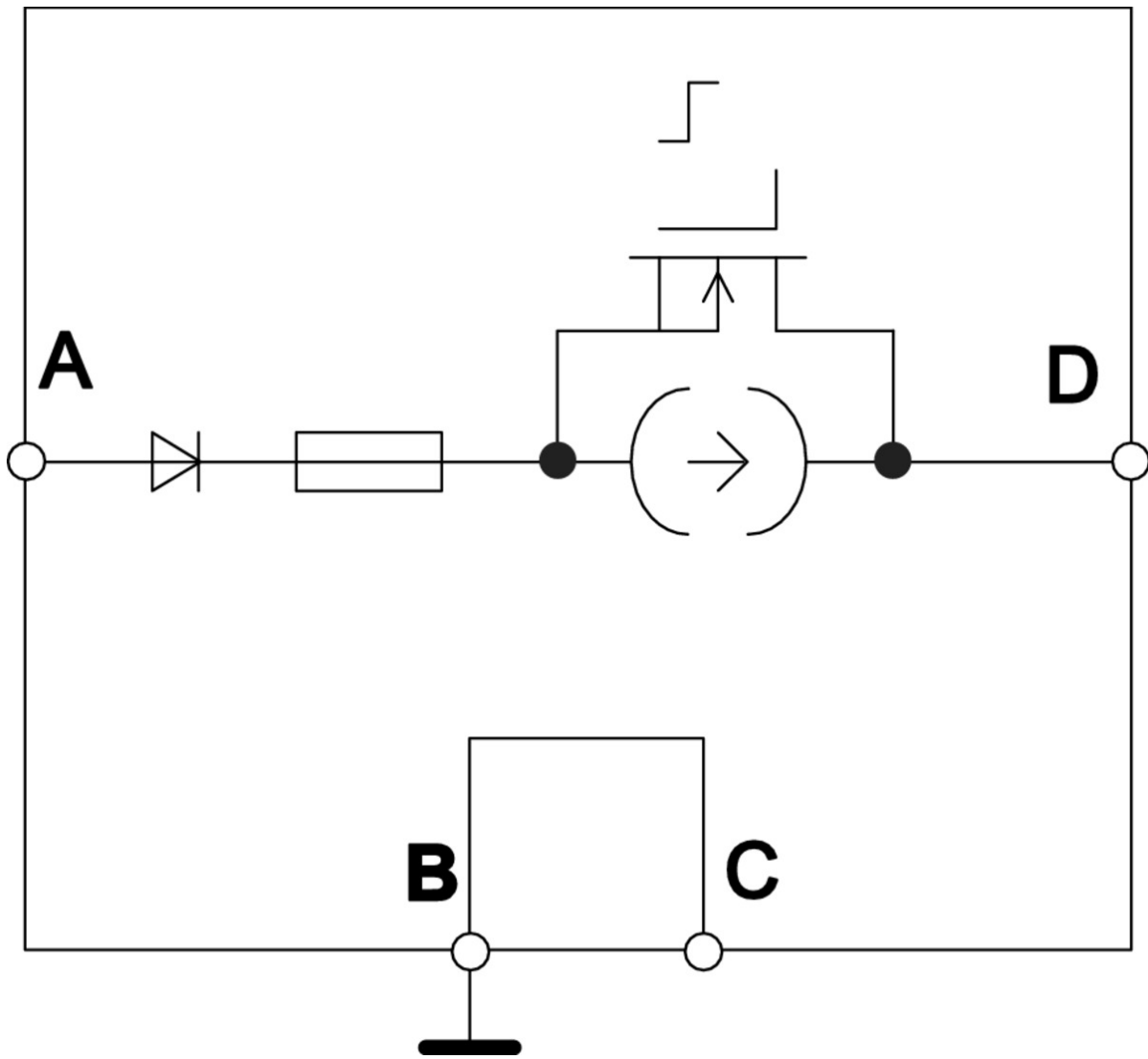
### Electrical connection ratings

Operating voltage DC		
	$U_B$	15 ... 24 ... 40 V DC
Current consumption		
Module current consumption		5 mA
Fusing		
Internal (fine-wire fuse 20 x 5 mm)		6,3 A Slow blow; breaking capacity min. 1 kA
Degree of contamination (external, according to EN 60947-1)		2
Connection cross-section		0,14 ... 2,5 mm <sup>2</sup>
		<b>Terminal: A</b>
Switching frequency, electrical		max.1 Hz
Type of input		Semiconductor input
		<b>Terminal: D</b>
Type of output		Semiconductor output
Switching current		1 ... 3000 mA
Output current		
Inrush current limiting		60 mA
Switching load		
Load capacitance on which interference can be suppressed (at input voltage 24 V)		Max. 40 $\mu$ F
Voltage drop $U_d$		
After the limiting time has elapsed		max.1,0 V
Duration of limiting		
At input voltage 24 V and max. switching frequency 1 Hz		75 ... 160 ms

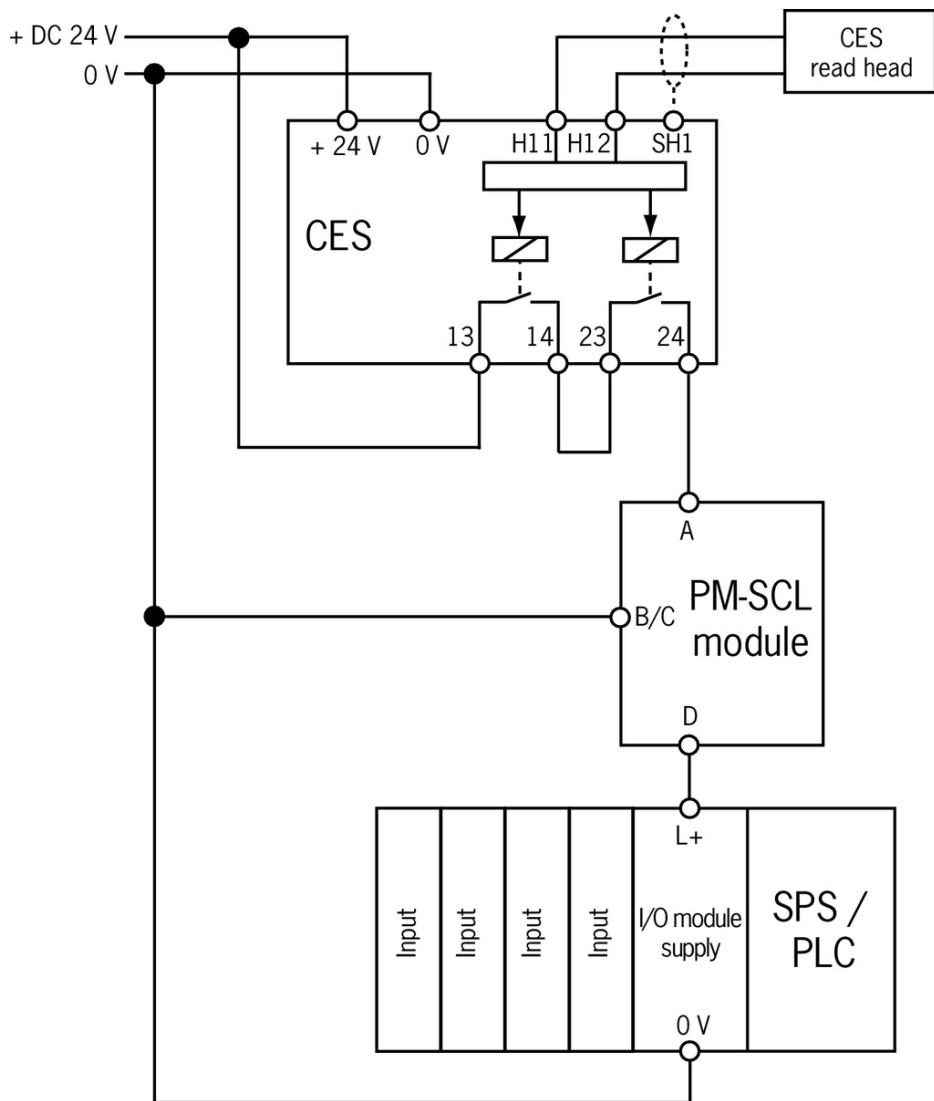
Dimension drawing



**Block diagram and connection example**






### Block diagram and connection example



### Instructions


- ✔ Betriebsanleitung Einschaltstrombegrenzungsmodul PM-SCL

	Doc. no.	Version	Language	Download
Betriebsanleitung Einschaltstrombegrenzungsmodul PM-SCL Operating Instructions Inrush Current Limiting Module PM-SCL	097608	05-01/11	 	 0.5 MB

### Catalogs

- ✔ Transpondercodierte Sicherheitssysteme mit externer Auswertung Transponder-coded safety systems with external evaluation Sistemas de seguridad con codificación por transponder y evaluación externa Systèmes de sécurité à codage par transpondeur avec analyse externe

Doc. no. Version Language Download

Transpondercodierte Sicherheitssysteme mit externer Auswertung	127596	02-01/18		 3.1 MB
Systemes de sécurité à codage par transpondeur avec analyse externe	137968	02-01/18		 3.0 MB
Sistemas de seguridad con codificación por transponder y evaluación externa	139969	02-01/18		 3.0 MB
Transponder-coded safety systems with external evaluation	127597	02-01/18		 3.0 MB