

ITEM 106648 STP3A-4141A024SEM4AS3

Description	Technical data	Accessories	Downloads
-------------	----------------	-------------	-----------



Features

- › Power supply for the guard locking solenoid from AS-i bus
- › Actuating head made of metal
- › Auxiliary release on the front
- › According to AS-Interface specification 3.1

Guard locking type

STP3 Closed-circuit current principle, guard locking by spring force. Release by control of AS-i output 0.

Control of the guard locking solenoid

The guard locking solenoid is controlled by the control system via AS-Interface bus bit D0. It is only supplied from the AS-i bus; an additional supply of auxiliary power is not necessary. The current consumption with solenoid switched on is 400 mA.

AS-Interface inputs

- D0, D1** Door monitoring contact SK
D2, D3 Solenoid monitoring contact ÜK

Evaluation is performed via a safety monitor.

AS-Interface outputs

D0 Guard locking solenoid

D1 Red LED

D2 Green LED

LED function display

- › The Power LED indicates the operating voltage on the bus.
 - › The Fault LED indicates if a fault has been detected on the AS-Interface bus.
 - › The green and the red LEDs can be controlled as required by the control system via the bus using bits D1 and D2.
-

Auxiliary release

Is used for releasing the guard locking with the aid of a tool. To protect against tampering, the auxiliary release is sealed with sealing lacquer.

Approvals



Mechanical values and environment

Housing material	Reinforced thermoplastic
Weight	
	Net 0,5 kg
Ambient temperature	-20 ... 55 °C
Degree of protection	IP67
Mechanical life	1 x 10 ⁶
Contact material	Silver alloy, gold flashed
Switching principle	Slow-action switching contact
Installation position	Any
Number of door position positively driven contacts	
According to As-i Safety at Work	1 D0,D1 [1]
Number of guard lock monitoring positively driven contacts	
According to As-i Safety at Work	1 D2,D3 [2]
Connection	
	1 x Plug connector M12 [3]
Approach speed	
	max. 20 m/min
Actuation frequency	1200 1/h

Guard locking principle	Closed-circuit current principle
Locking force F_{max}	2500 N
Locking force F_{Zh}	2000 N
Retention force	20 N
Extraction force	30 N
Actuating force	35 N

Electrical connection ratings

ASi voltage	22,5 ... 30 V 31,6 V
ASi operating current	Incl. solenoid currentmax.400 mA
Solenoid duty cycle	100 %
ASi slave type	
According to ASI specification 2.1	EA code: 7
According to ASI specification 2.1	ID code: B
ASi data in	
According to ASI safety at work	D0,D1,D2,D3 [4]
ASi data out	
Guard locking solenoid	D0 [5]
LED red	D1 [6]
LED green	D2 [7]
ASi LED	
LED green	Power [8]
LED red	Fault [9]

Reliability values acc. to EN ISO 13849-1

B10 _D	5×10^6
------------------	-----------------

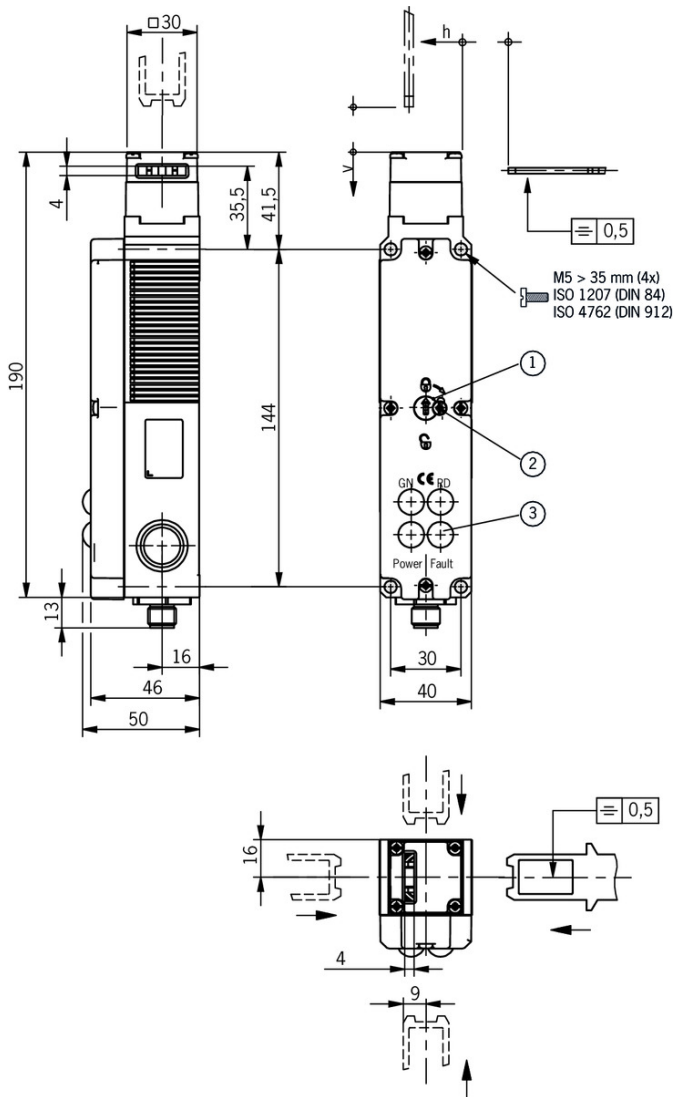
in combination with Actuator BETAETIGER-S-GT-SN

Mechanical values and environment

Overtravel	Horizontal	5 mm
	Vertical	5 mm
Insertion depth	Horizontal	24,5 mm
	Vertical	24,5 mm

- [1] 1 = Door closed
- [2] 1 = Locked
- [3] 4-pin
- [4] See positively driven NC contact
- [5] 1 = Solenoid energized
- [6, 7] 1 = LED on
- [8] ASI voltage is present
- [9] Offline phase or address 0

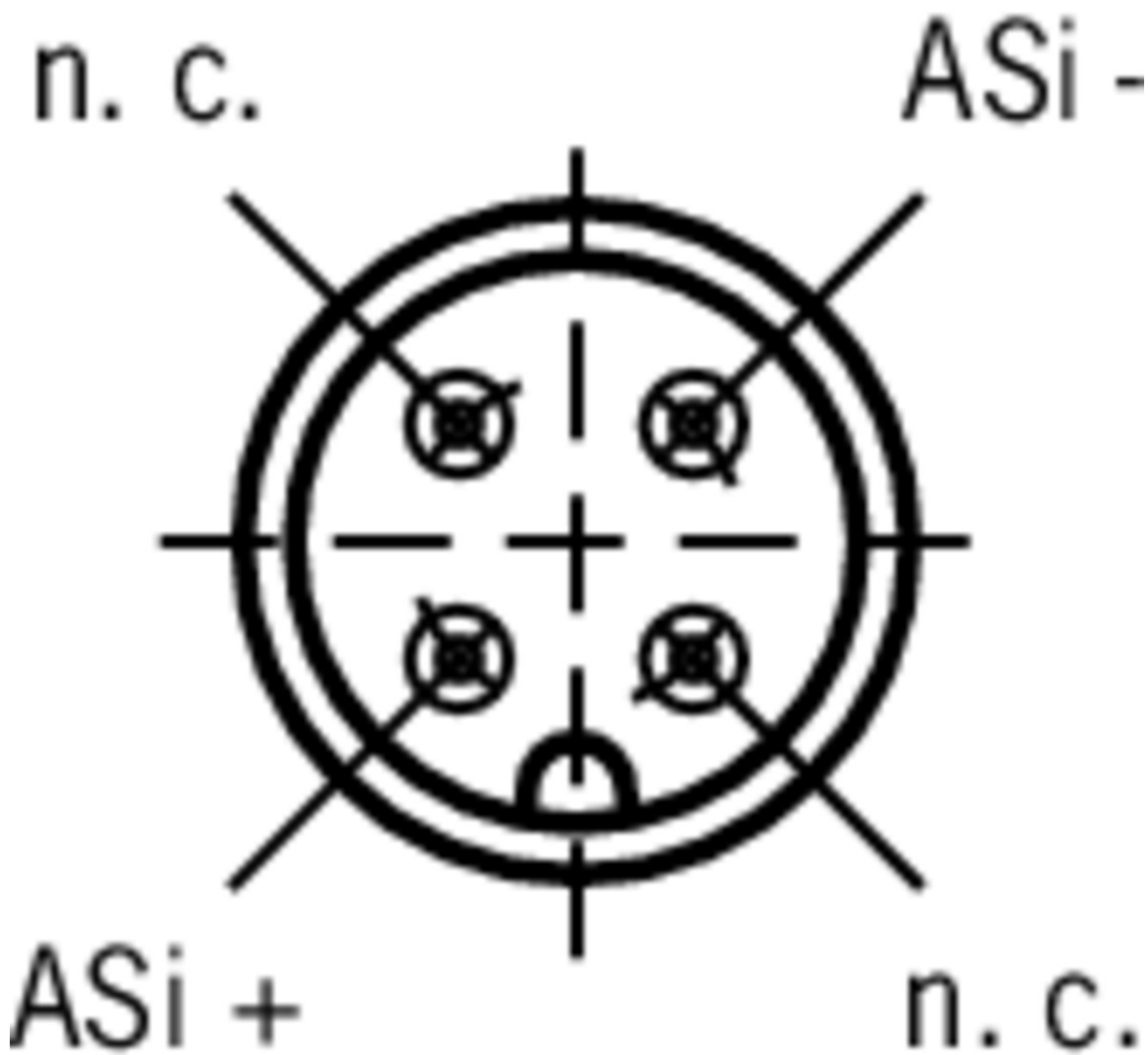
Dimension drawing



Legende

- 1 Auxiliary release
- 2 Locking screw
- 3 LED indicator

Connector assignment



Legende

View of connection side

Actuator

✓ Actuator S for safety switches SGA/SGP/STA/STP/STM



097861 BETAETIGER-S-G-SN-C2115

✓ Features

- › Two safety screws included
- › Physically compatible with TP actuator P-G



095738 BETAETIGER-S-GT-SN

✓ Features

- › Two safety screws included
- › Actuators with rubber bushings

▼ Actuator L for safety switches SGA/SGP/STA/STP/STM for insertion funnel



095739 BETAETIGER-S-GT-LN

▼ Features

- › Two safety screws included
- › Actuators with rubber bushings

▼ Actuator S, bent, for safety switches SGA/SGP/STA/STP/STM



095740 BETAETIGER-S-WQT-SN

▼ Features

- › Two safety screws included



115073 BETAETIGER-S-W-SN-C2115

▼ Features

- › Two stainless safety screws per actuator
- › Minimum door radius 300 mm



105808 BETAETIGER-S-WT-SN-C2115

▼ Features

- › Two stainless safety screws per actuator
- › Actuators with rubber bushings
- › Minimum door radius 300 mm

▼ Hinged actuator L left/right, for safety switches SGA/SGP/STA/STP/STM for insertion funnel



096844 RADIUSBETAETIGER-S-LR-LN

▼ Features

- › Actuators made of stainless steel
- › Two stainless safety screws per actuator
- › For doors hinged on right and left

▼ Actuator L, bent, for safety switches SGA/SGP/STA/STP/STM for insertion funnel



095741 BETAETIGER-S-WQT-LN

▼ Features

- › Two safety screws included
- › Actuators with rubber bushings



105809 BETAETIGER-S-WT-LN-C2115

▼ Features

- › Two stainless safety screws per actuator
- › Actuators with rubber bushings
- › Minimum door radius 300 mm

▼ Hinged actuator S top/bottom for safety switches SGA/SGP/STA/STP/STM

095315 RADIUSBETAETIGER-S-OU-SN



- ✓ Features
 - › Actuators made of stainless steel
 - › Two safety screws included
 - › For doors hinged at top and bottom
-

✓ Hinged actuator S left/right for safety switches SGA/SGP/STA/STP/STM



- 096838** RADIUSBETAETIGER-S-LR-SN
- ✓ Features
 - › Actuators made of stainless steel
 - › Two safety screws included
 - › For doors hinged on right and left
-

✓ Hinged actuator L top/bottom, for safety switches SGA/SGP/STA/STP/STM for insertion funnel



- 096697** RADIUSBETAETIGER-S-OU-LN
- ✓ Features
 - › Actuators made of stainless steel
 - › Two stainless safety screws per actuator
 - › For doors hinged at top and bottom
-

Function expansion

✓ Handle for wire front release



- 099795** AY-HDL-099795
- ✓ Features
 - › Suitable for all wire front releases
-

✓ Insertion funnel for safety switches SGP/STA/STP/STM/SGA



- 093157** EINFUEHRTRICHTER-S
-

✓ Lock for auxiliary release for safety switches CTP/TP/STP



- 084177** SCHLOSS TP VERSCHIEDENSCHLIESSEND
- ✓ Features
 - › Lock unique locking
 - › Key removable in “unlocked” and “locked” positions
-



- 086236** SCHLOSS TP GLEICHSCHLIESSEND
- ✓ Features
 - › Identical locking
 - › Key removable in “unlocked” and “locked” positions
-



- 109212** SCHLOSS TP GLEICHSCHLIESSEND C2293
- ✓ Features
 - › Identical locking

- › Key can be removed only in “locked” position
-

- ▼ Release with automatic reset for safety switches CTP/TP/STP



103110 ENTRIEGELUNG RUECKSTELLEND TP/STP

- ▼ Emergency unlocking for safety switches CTP/TP/STP



099877 NOTENTSPERRUNG TP/STP

- ▼ Lockout bar STA/STP/SGA/SGP/STM



105701 SPERREINSATZ STP/STA

- ▼ Features

- › Prevents unintentional closing of the door
 - › Can be secured with padlocks
-

- ▼ Wire front release



096230 AE-B-A1-02,0-096230

- ▼ Features

- › Can be used as escape release or emergency unlocking
 - › No automatic return
 - › Sheath length 2 m (rope length 6 m)
-



111233 AE-B-A1-03,0-F-111233

- ▼ Features

- › Can be used as escape release or emergency unlocking
 - › automatic return
 - › Sheath length 3 m (rope length 6 m)
-



097747 AE-B-A1-02,0-F-097747

- ▼ Features

- › Can be used as escape release or emergency unlocking
 - › automatic return
 - › Sheath length 2 m (rope length 6 m)
-



098313 AE-B-A1-03,0-098313

- ▼ Features

- › Can be used as escape release or emergency unlocking
 - › No automatic return
 - › Sheath length 3 m (rope length 6 m)
-



098314 AE-B-A1-04,0-098314

- ▼ Features

- › Can be used as escape release or emergency unlocking
- › No automatic return
- › Sheath length 4 m (rope length 6 m)



124770 AE-B-A1-06,0-F-124770

▼ Features

- › Can be used as escape release or emergency unlocking
- › automatic return
- › Rope length 6 m (without sheath)



125582 AE-B-A1-06,0-125582

▼ Features

- › Can be used as escape release or emergency unlocking
- › No automatic return
- › Rope length 6 m (without sheath)

Mounting accessories

▼ Mounting plates EMP-SB for safety switches CTP, TP...A, STA, STP and TX



093456 EMP-SB

▼ Features

- › For vertical and horizontal mounting of safety switches TP...A, STA, STP and TX

▼ Mounting plates EMP-B1 for actuators for safety switches CTP, TP...A, STA, STP, TX and TZ



093457 EMP-B1

▼ Mounting plates EMP-B2 for actuators for safety switches CTP, TP...A, STA, STP, TX and TZ



093458 EMP-B2

Spare parts

▼ Replacement key for mechanical key release



099434 ERSATZSCHLUESSEL GLEICHSCHL.0354

Bolt

▼ Bolt S-... for safety switches STA, STP, SGP and SGA



096385 RIEGEL S-C

▼ Features

- › Steel bolt
- › For doors hinged on the left

- › Can be locked in open position with padlocks
- › Actuator included



096384 RIEGEL S-A

Features

- › Steel bolt
- › For doors hinged on the right
- › Can be locked in open position with padlocks
- › Actuator included

- ▼ Bolt BTC-ST/G... without escape release for safety switches STA, STP, SGP and SGA



106284 BTC-ST/G-S-TH-00-X

Features

- › Aluminum bolt
- › For doors hinged on the left or right
- › Can be locked in open position with padlocks
- › Actuator included

- ▼ Bolt STP-GFK for safety switches STA, STP, SGP and SGA



098121 RIEGEL STP-GFK

Features

- › Fiber glass reinforced plastic bolt
- › For doors hinged on the left or right
- › Can be locked in open position with padlocks
- › Actuator included

Connection material

- ▼ Bus coupling module with plug connector M12, 5-pin



105756 BCM-A-P2-SEM4-1

Features

- › Conversion from M12 to ribbon cable
- › Very compact design
- › Easy handling







Instructions

- ▼ Betriebsanleitung Sicherheitsschalter STP...AS3

	Doc. no.	Version	Language	Download
Betriebsanleitung Sicherheitsschalter STP...AS3 Operating Instructions Safety Switches STP...AS3	106656	03-10/11		0.5 MB

Catalogs

▼ Sicherheitsschalter mit AS-Interface Safety Switches with AS-Interface Interrupteurs de sécurité avec AS-Interface

	Doc. no.	Version	Language	Download
Sicherheitsschalter mit AS-Interface	092164	11-04/17		 2.3 MB
Interrupteurs de sécurité avec AS-Interface	112564	11-04/17		 2.3 MB
Safety Switches with AS-Interface	092332	11-04/17		 2.3 MB

Declaration of conformity

▼ EU prohlášení o shodě

	Doc. no.	Version	Language	Download
EU-Konformitätserklärung	2077153	25-02/17		 0.3 MB
Declaración UE de conformidad				
Déclaration UE de conformité				
Dichiarazione di conformità				
EU declaration of conformity				
EU prohlášení o shodě	2077153	25-02/17		 0.5 MB
EU-overensstemmelseserklæring				
Δήλωση συμμόρφωσης της ΕΕ				
EU-vaatimustenmukaisuusvakuutus				
EU-típusbizonyítvány				
EU-conformiteitsverklaring				
Deklaracja zgodności UE				
Declaração de Conformidade UE				
Declarația de conformitate UE				
EÚ vyhlásenie o zhode				