

## ITEM 099900 SGP-TW-1E-2131AC-M-S1

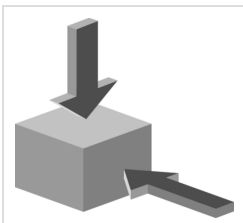
| Description | Technical data | Accessories | Downloads |
|-------------|----------------|-------------|-----------|
|-------------|----------------|-------------|-----------|



### Features

- › Actuating heads made of metal
- › Simultaneous monitoring of two safety doors
- › Cable entry M20 x 1.5
- › Additional lock on the switch head

### Approach direction



- › Figure  
Horizontal and vertical  
Can be adjusted in 90° steps

### Switching element

**2131** Slow-action switching contact 3 NC $\ominus$  + 1 NO

## Approvals



## Mechanical values and environment

|  |                               |
|--|-------------------------------|
| Housing material                                   | Reinforced thermoplastic      |
| Weight   |                               |
| Net  | 0,5 kg                        |
| Ambient temperature                                | -20 ... 80 °C                 |
| Degree of protection                               | IP67                          |
| Mechanical life                                    | 1 x 10 <sup>6</sup>           |
| Contact material                                   | Silver alloy, gold flashed    |
| Switching principle                                | Slow-action switching contact |
| Installation position                              | Any                           |
| Number of door position positively driven contacts | 3                             |
| Number of door position NO contacts                | 1                             |
| Connection   |                               |
|  | 3 x M20 x 1.5                 |
| Approach speed                                     |                               |
| max.   | 20 m/min                      |
| Actuation frequency                                | 6700 1/h                      |
| Retention force                                    | 10 N                          |
| Extraction force                                   | 25 N                          |
| Actuating force                                    | 25 N                          |
| Insertion depth                                    | 24,5 mm                       |

## Electrical connection ratings

|   |         |
|---|---------|
| Rated thermal current I <sub>th</sub>             | 4 A     |
| Utilization category according to EN 60947-5-1    |         |
| AC-15   | 4A 230V |
| DC-13   | 4A 24V  |
| Short circuit protection according to IEC 60269-1 |         |
| (Fuse)  | 4A gG   |
| Rated insulation voltage U <sub>i</sub>           | 250 V   |
| Rated impulse withstand voltage U <sub>imp</sub>  | 2,5 kV  |
| Switching voltage                                 |         |
| Min. at 10mA                                      | 12 V    |
| Switching current                                 |         |
| Min. at 24V                                       | 1 mA    |

|                          |                              |
|--------------------------|------------------------------|
| Connection cross-section | 0,34 ... 1,5 mm <sup>2</sup> |
|--------------------------|------------------------------|

### Miscellaneous

|                    |                          |
|--------------------|--------------------------|
| Additional feature | With locking (identical) |
|--------------------|--------------------------|

### Reliability values acc. to EN ISO 13849-1

|                  | Monitoring of the safety guard position |
|------------------|---|
| B10 <sub>D</sub> | 2 x 10 <sup>6</sup>                     |

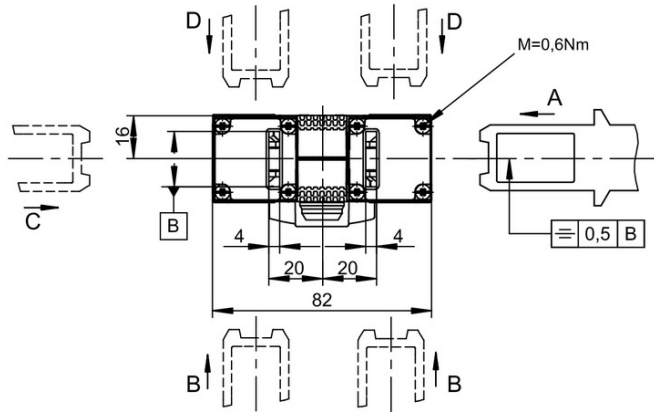
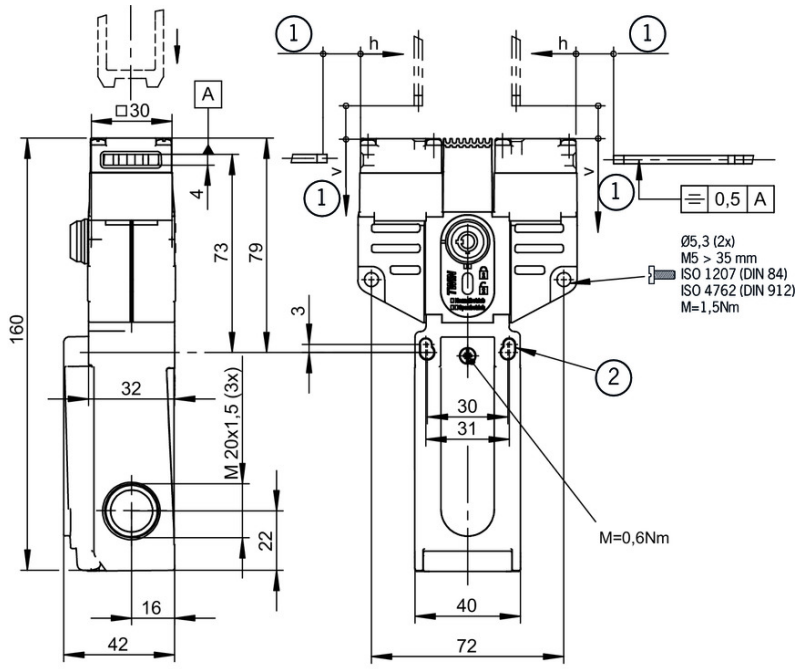
---

### in combination with Actuator BETAETIGER-S-GT-SN

### Mechanical values and environment

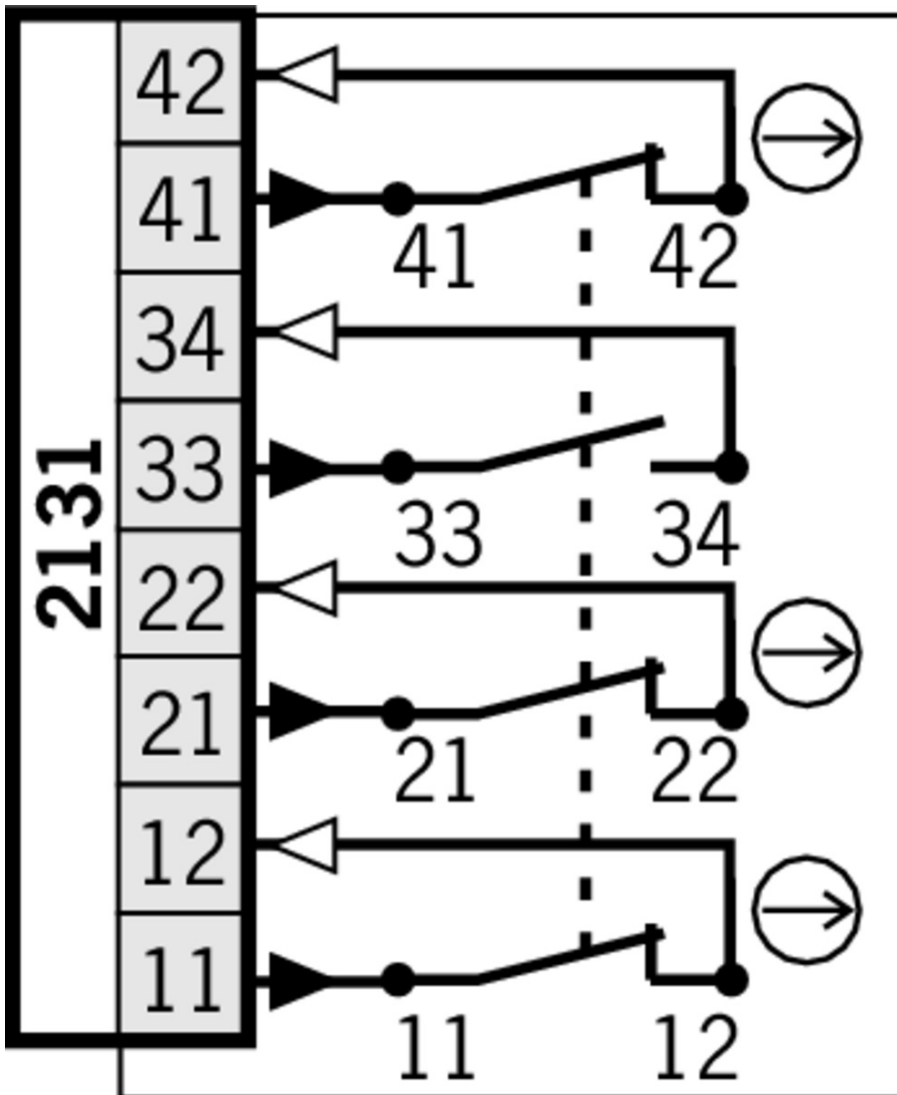
|            |      |
|------------|------|
| Overtravel | 5 mm |
|------------|------|

# Maßzeichnung



## Legende

- 1 Insertion depth
- 2 Do not screw tight here (2x)



## Actuator

- ▼ Actuator S for safety switches SGA/SGP/STA/STP/STM



**097861** BETAETIGER-S-G-SN-C2115

- ▼ Features

- › Two safety screws included
- › Physically compatible with TP actuator P-G



**095738** BETAETIGER-S-GT-SN

- ▼ Features

- › Two safety screws included
- › Actuators with rubber bushings

- ▼ Actuator S, bent, for safety switches SGA/SGP/STA/STP/STM



**095740** BETAETIGER-S-WQT-SN

- ▼ Features

- › Two safety screws included

---

▼ Hinged actuator S top/bottom for safety switches SGA/SGP/STA/STP/STM



**095315** RADIUSBETAETIGER-S-OU-SN

▼ Features

- › Actuators made of stainless steel
- › Two safety screws included
- › For doors hinged at top and bottom

---

▼ Hinged actuator S left/right for safety switches SGA/SGP/STA/STP/STM



**096838** RADIUSBETAETIGER-S-LR-SN

▼ Features

- › Actuators made of stainless steel
- › Two safety screws included
- › For doors hinged on right and left

---

## Connection material

▼ Cable glands M20x1.5



**086233** EKPM20/06 086233

---

## Function expansion

▼ Lockout bar STA/STP/SGA/SGP/STM



**105701** SPERREINSATZ STP/STA

▼ Features

- › Prevents unintentional closing of the door
- › Can be secured with padlocks

---

## Spare parts

▼ Replacement key for mechanical key release



**099434** ERSATZSCHLUESSEL GLEICHSCHL.0354

---

## Instructions

▼ Betriebsanleitung Sicherheitsschalter SGP-TW... (Twin)

|   | Doc. no. | Version  | Language | Download |
|---|----------|----------|----------|----------|
| Betriebsanleitung Sicherheitsschalter SGP-TW... (Twin)              | 100872   | 05-04/16 |          | 2.8 MB   |
| Manual de instrucciones Interruptores de seguridad SGP-TW... (Twin) |          |          |          |          |
| Mode d'emploi Interrupteur de sécurité SGP-TW... (Twin)             |          |          |          |          |
| Istruzioni di impiego Finecorsa di sicurezza SGP-TW... (Twin)       |          |          |          |          |
| Operating Instructions Safety Switch SGP-TW... (Twin)               |          |          |          |          |

## Catalogs

- Bezpečnostní spínače s plastovým pouzdrém Sicherheitsschalter mit Kunststoffgehäuse Safety Switches with Plastic Housing Interruptores de seguridad con carcasa plástica Interrupteurs de sécurité avec boîtier plastique 塑料壳体 的安全开关

|  | Doc. no. | Version  | Language | Download |
|--|----------|----------|----------|----------|
| Sicherheitsschalter mit Kunststoffgehäuse        | 096955   | 11-03/18 |          | 6.6 MB   |
| Interrupteurs de sécurité avec boîtier plastique | 100677   | 11-03/18 |          | 6.6 MB   |
| Interruptores de seguridad con carcasa plástica  | 104855   | 11-03/18 |          | 6.6 MB   |
| Bezpečnostní spínače s plastovým pouzdrém        | 121649   | 11-03/18 |          | 6.6 MB   |
| Safety Switches with Plastic Housing             | 096956   | 11-03/18 |          | 6.6 MB   |
| 塑料壳体 的安全开关                                       | 116243   | 11-03/18 |          | 6.2 MB   |

## Declaration of conformity

- EU prohlášení o shodě

|  | Doc. no. | Version  | Language                         | Download |
|--|----------|----------|----------------------------------|----------|
| EU-Konformitätserklärung<br>Declaración UE de conformidad<br>Déclaration UE de conformité<br>Dichiarazione di conformità<br>EU declaration of conformity   | 2077153  | 25-02/17 | <br><br><br><br>                 | 0.3 MB   |
| EU prohlášení o shodě<br>EU-overensstemmelseserklæring<br>Δήλωση συμμόρφωσης της ΕΕ<br>EU-vaatimustenmukaisuusvakuutus<br>EU-típusbizonyítvány<br>EU-conformiteitsverklaring<br>Deklaracja zgodności UE<br>Declaração de Conformidade UE<br>Declarația de conformitate UE<br>EÚ vyhlásenie o zhode | 2077153  | 25-02/17 | <br><br><br><br><br><br><br><br> | 0.5 MB   |

## CAD data

CAD data for this item on TraceParts