

ITEM 100907 SGP2E-2131A-9C-DCX

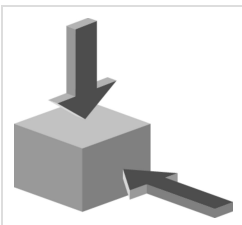
Description	Technical data	Accessories	Downloads
-------------	----------------	-------------	-----------



Features

- › Actuating head made of metal
- › Plug connector MR9

Approach direction



- › Figure
Horizontal and vertical
Can be adjusted in 90° steps

Switching element

2131 Slow-action switching contact 3 NC ⊕ + 1 NO

Approvals



Mechanical values and environment

Housing material	Reinforced thermoplastic
Weight	
Net	0,5 kg
Ambient temperature	-20 ... 80 °C
Degree of protection	IP65
Mechanical life	2×10^6
Contact material	Silver alloy, gold flashed
Switching principle	Slow-action switching contact
Installation position	Any
Number of door position positively driven contacts	3
Number of door position NO contacts	1
Connection	
1 x	Plug connector BHA9 [1]
Approach speed	
max.	20 m/min
Actuation frequency	6700 1/h
Retention force	10 N
Extraction force	25 N
Actuating force	25 N
Insertion depth	24,5 mm

Electrical connection ratings

Rated thermal current I_{th}	4 A
Utilization category according to EN 60947-5-1	
AC-15	4A 50V
DC-13	4A 24V
Short circuit protection according to IEC 60269-1	
(Fuse)	4A gG
Rated insulation voltage U_i	250 V
Rated impulse withstand voltage U_{imp}	2,5 kV
Switching voltage	
Min. at 10mA	12 V
Switching current	
Min. at 24V	1 mA

Reliability values acc. to EN ISO 13849-1

	Monitoring of the safety guard position
B10 _D	3×10^6

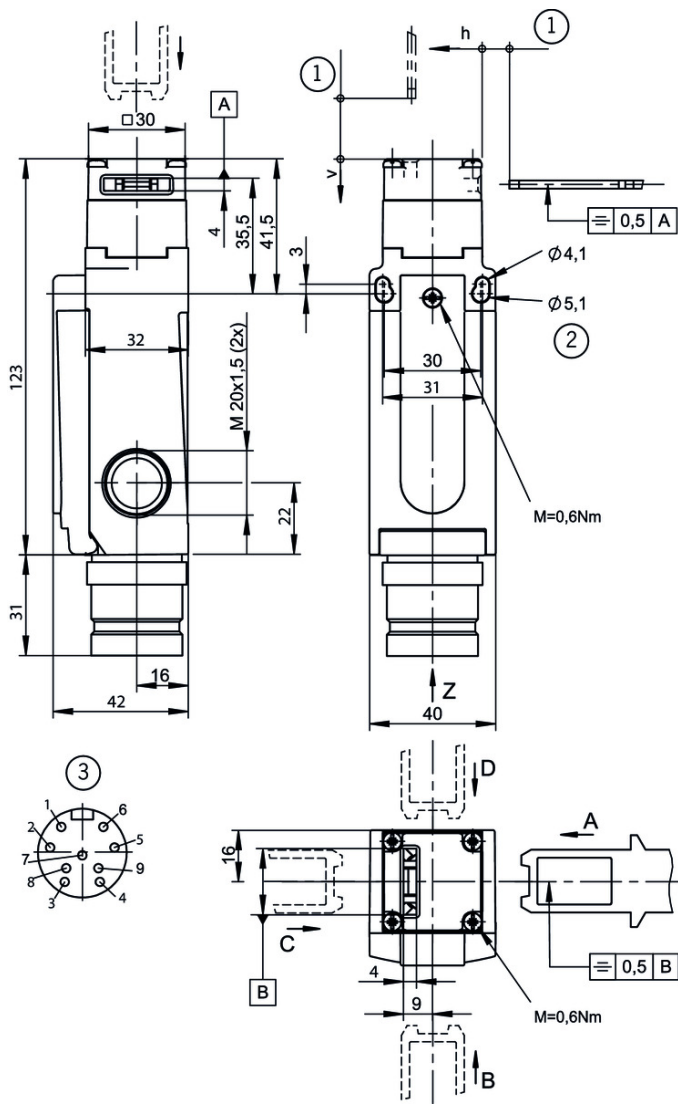
in combination with Actuator BETAETIGER-S-GT-SN

Mechanical values and environment

Overtravel	Horizontal	5 mm
	Vertical	5 mm

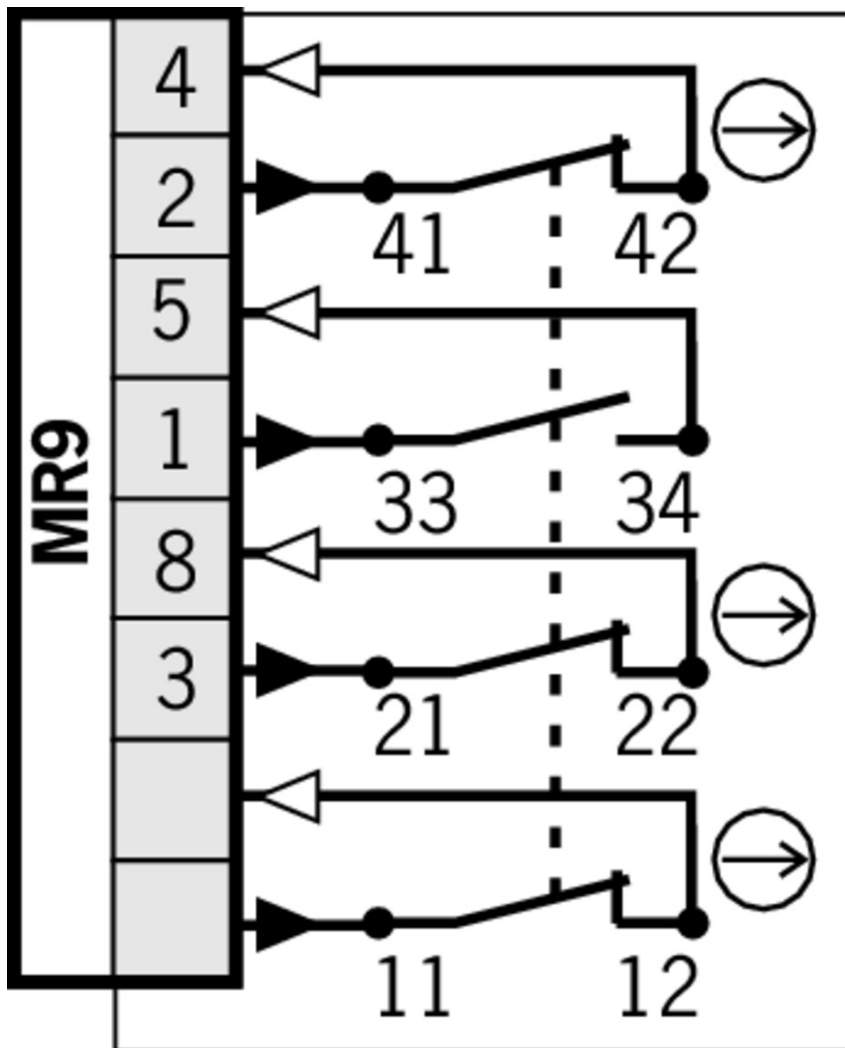
[1] 9-pin (without PE)

Dimension drawing



Legende

- 1 Insertion depth
- 2 Fixed positioning for safety applications (screw M5)
- 3 View Z: Plug connector aligned



Actuator

- ✓ Actuator L, bent, for safety switches SGA/SGP/STA/STP/STM for insertion funnel



095741 BETAETIGER-S-WQT-LN

✓ Features

- › Two safety screws included
- › Actuators with rubber bushings

- ✓ Hinged actuator L left/right, for safety switches SGA/SGP/STA/STP/STM for insertion funnel



096844 RADIUSBETAETIGER-S-LR-LN

✓ Features

- › Actuators made of stainless steel
- › Two stainless safety screws per actuator
- › For doors hinged on right and left

- ✓ Actuator S, bent, for safety switches SGA/SGP/STA/STP/STM



095740 BETAETIGER-S-WQT-SN

- ✓ Features
 - › Two safety screws included
-

- ✓ Hinged actuator L top/bottom, for safety switches SGA/SGP/STA/STP/STM for insertion funnel



096697 RADIUSBETAETIGER-S-OU-LN

- ✓ Features
 - › Actuators made of stainless steel
 - › Two stainless safety screws per actuator
 - › For doors hinged at top and bottom
-

- ✓ Actuator S for safety switches SGA/SGP/STA/STP/STM



095738 BETAETIGER-S-GT-SN

- ✓ Features
 - › Two safety screws included
 - › Actuators with rubber bushings
-



097861 BETAETIGER-S-G-SN-C2115

- ✓ Features
 - › Two safety screws included
 - › Physically compatible with TP actuator P-G
-

- ✓ Hinged actuator S top/bottom for safety switches SGA/SGP/STA/STP/STM



095315 RADIUSBETAETIGER-S-OU-SN

- ✓ Features
 - › Actuators made of stainless steel
 - › Two safety screws included
 - › For doors hinged at top and bottom
-

- ✓ Hinged actuator S left/right for safety switches SGA/SGP/STA/STP/STM



096838 RADIUSBETAETIGER-S-LR-SN

- ✓ Features
 - › Actuators made of stainless steel
 - › Two safety screws included
 - › For doors hinged on right and left
-

- ✓ Actuator L for safety switches SGA/SGP/STA/STP/STM for insertion funnel



095739 BETAETIGER-S-GT-LN

- ✓ Features
 - › Two safety screws included
 - › Actuators with rubber bushings
-

▼ Bolt BTC-ST/G... without escape release for safety switches STA, STP, SGP and SGA



106284 BTC-ST/G-S-TH-00-X

▼ Features

- › Aluminum bolt
- › For doors hinged on the left or right
- › Can be locked in open position with padlocks
- › Actuator included

▼ Bolt S-... with escape release for safety switches STA, STP, SGP and SGA



096390 RIEGEL S-AF

▼ Features

- › Steel bolt
- › Lever for escape release from the danger area
- › For doors hinged on the right
- › Detent knob in open position
- › Can be locked in open position with padlocks
- › Actuator included



096391 RIEGEL S-CF

▼ Features

- › Steel bolt
- › Lever for escape release from the danger area
- › For doors hinged on the left
- › Detent knob in open position
- › Can be locked in open position with padlocks
- › Actuator included

▼ Bolt S-... for safety switches STA, STP, SGP and SGA



096384 RIEGEL S-A

▼ Features

- › Steel bolt
- › For doors hinged on the right
- › Can be locked in open position with padlocks
- › Actuator included

▼ Bolt BTC-ST/G... with escape release for safety switches STA, STP, SGP and SGA



106285 BTC-ST/G-S-TH-01-F

▼ Features

- › Aluminum bolt
- › For doors hinged on the left or right
- › Lever for escape release from the danger area
- › Pushbutton in open position
- › Can be locked in open position with padlocks
- › Actuator included

▼ Bolt STP-GFK for safety switches STA, STP, SGP and SGA

098121 RIEGEL STP-GFK



- ✓ Features
 - › Fiber glass reinforced plastic bolt
 - › For doors hinged on the left or right
 - › Can be locked in open position with padlocks
 - › Actuator included
-

Function expansion

- ✓ Insertion funnel for safety switches SGP/STA/STP/STM/SGA



093157 EINFUEHRTRICHTER-S

- ✓ Lockout bar STA/STP/SGA/SGP/STM



105701 SPERREINSATZ STP/STA

- ✓ Features
 - › Prevents unintentional closing of the door
 - › Can be secured with padlocks
-

Mounting accessories

- ✓ Switch bracket TP/STP GFK



096613 SCHALTERAUFNAHME TP/STP GFK

- ✓ Features
 - › Switch bracket made of fiber glass reinforced plastic
 - › For left or right hinged doors
-

Connection material

- ✓ Connection cable with plug connector MR9, 9-pin, 1.8m



102502 C-MINF09-09X1,0PV01,8-MA-102502

- ✓ Features
 - › MR9 female plug, 9-pin
 - › Straight plug connector
 - › PVC cable
 - › Cable length 1.8 m
 - › With flying lead
-



102510 C-MINF09-09X1,0PU01,8-MA-102510

- ✓ Features
 - › MR9 female plug, 9-pin
 - › Straight plug connector
 - › PUR cable
 - › Cable length 1.8 m
 - › With flying lead
-

▼ Connection cable with plug connector MR9, 9-pin, 3.6m



100948 C-MINF09-09X1,0PV03,6-MA-100948

▼ Features

- › MR9 female plug, 9-pin
 - › Straight plug connector
 - › PVC cable
 - › Cable length 3.6 m
 - › With flying lead
-



102511 C-MINF09-09X1,0PU03,6-MA-102511

▼ Features

- › MR9 female plug, 9-pin
 - › Straight plug connector
 - › PUR cable
 - › Cable length 3.6 m
 - › With flying lead
-

▼ Connection cable with plug connector MR9, 9-pin, 6m



102503 C-MINF09-09X1,0PV06,0-MA-102503

▼ Features

- › MR9 female plug, 9-pin
 - › Straight plug connector
 - › PVC cable
 - › Cable length 6 m
 - › With flying lead
-



102512 C-MINF09-09X1,0PU06,0-MA-102512

▼ Features

- › MR9 female plug, 9-pin
 - › Straight plug connector
 - › PUR cable
 - › Cable length 6 m
 - › With flying lead
-

▼ Connection cable with plug connector MR9, 9-pin, 9.1m



102504 C-MINF09-09X1,0PV09,1-MA-102504

▼ Features

- › MR9 female plug, 9-pin
 - › Straight plug connector
 - › PVC cable
 - › Cable length 9.1 m
 - › With flying lead
-



102513 C-MINF09-09X1,0PU09,1-MA-102513

▼ Features

- › MR9 female plug, 9-pin
- › Straight plug connector
- › PUR cable
- › Cable length 9.1 m

- › With flying lead
-

▼ Connection cable with plug connector MR9, 9-pin, 12.1m



103154 C-MINF09-09X1,0PV12,1-MA-103154

▼ Features

- › MR9 female plug, 9-pin
 - › Straight plug connector
 - › PVC cable
 - › Cable length 0.91 m
 - › With flying lead
-



102514 C-MINF09-09X1,0PU12,1-MA-102514

▼ Features

- › MR9 female plug, 9-pin
 - › Straight plug connector
 - › PUR cable
 - › Cable length 12.1 m
 - › With flying lead
-

▼ Connection cable with plug connector MR9, 9-pin, 18.2m



103156 C-MINF09-09X1,0PV18,2-MA-103156

▼ Features

- › MR9 female plug, 9-pin
 - › Straight plug connector
 - › PVC cable
 - › Cable length 18.2 m
 - › With flying lead
-



103151 C-MINF09-09X1,0PU18,2-MA-103151

▼ Features

- › MR9 female plug, 9-pin
 - › Straight plug connector
 - › PUR cable
 - › Cable length 18.2 m
 - › With flying lead
-

▼ Connection cable with plug connector MR9, 9-pin, 15.2m








102515 C-MINF09-09X1,0PU15,2-MA-102515

▼ Features

- › MR9 female plug, 9-pin
 - › Straight plug connector
 - › PUR cable
 - › Cable length 15.2 m
 - › With flying lead
-

Instructions

▼ Betriebsanleitung Sicherheitsschalter SGP...

	Doc. no.	Version	Language	Download
Betriebsanleitung Sicherheitsschalter SGP... Manual de instrucciones Interruptores de seguridad SGP... Mode d'emploi pour les interrupteurs de sécurité SGP... Istruzioni di impiego dei finecorsa di sicurezza SGP... Operating Instructions Safety Switches SGP...	097700	07-08/15	    	 2.5 MB

Declaration of conformity

▼ EU prohlášení o shodě

	Doc. no.	Version	Language	Download
EU-Konformitätserklärung Declaración UE de conformidad Déclaration UE de conformité Dichiarazione di conformità EU declaration of conformity	2077153	25-02/17	    	 0.3 MB
EU prohlášení o shodě EU-overensstemmelseserklæring Δήλωση συμμόρφωσης της ΕΕ EU-vaatimustenmukaisuusvakuutus EU-típusbizonyítvány EU-conformiteitsverklaring Deklaracja zgodności UE Declaração de Conformidade UE Declarația de conformitate UE EÚ vyhlásenie o zhode	2077153	25-02/17	       	 0.5 MB