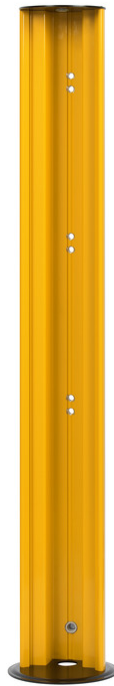


## ITEM 156890 AM-OS-C-A1-M-1000-156890

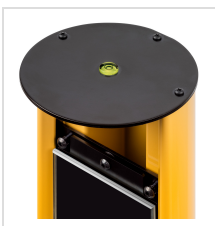
Description	Technical data	Accessories	Downloads
-------------	----------------	-------------	-----------



### Features

- › Mounting pillar for light grids and light curtains LCA
- › For protective field heights from 160 - 610 mm or for 2 beams
- › With integrated cable gland PG11
- › Protects against damage
- › Straightforward adjustment using spherical circular level in the cover

### Circular level in the cover



› Figure

### Mechanical values and environment

Height	1000 mm
Height of the protective field	610 mm <sup>[1]</sup>
Cable outlet	Yes

[1] 2 beams , 310, 460 and 610mm

## Mounting accessories

▼ Socket for mounting pillars 202 x 224 x 55 mm



**156884** AM-OS-P-AA-156884

▼ Features

- › Socket for mounting pillars
- › Spring-mounted floor plate made of steel
- › Improved compensation of unevenness
- › Adjustable via adjusting screws
- › Height 55 mm

▼ Socket for mounting pillars 202 x 224 x 34 mm



**156885** AM-OS-P-AB-156885

▼ Features

- › Socket for mounting pillars
- › Adjustable via adjusting screws
- › Height 34 mm

## Instructions

▼ Instrucciones de Montaje AM-OS-C-A1 Pilar de Montaje para cortinas fotoeléctricas LCA

	Doc. no.	Version	Language	Download
Montageanleitung AM-OS-C-A1 Montagesäule für LCA-Lichtvorhänge Assembly Instructions AM-OS-C-A1 Mounting Pillar for LCA light curtains	2504014	01-07/17		0.6 MB
Instructions de Montage AM-OS-C-A1 Colonne de Montage pour rideaux lumineux LCA	2504014	01-07/17		0.4 MB
Instrucciones de Montaje AM-OS-C-A1 Pilar de Montaje para cortinas fotoeléctricas LCA	2504014	01-07/17		0.4 MB








▼ Instrucciones de Montaje Montaje de la placa de base y de la cubierta en pilares de montaje

Doc. no.	Version	Language	Download
----------	---------	----------	----------

Montageanleitung Montage der Grundplatte und der Abdeckung für Montagesäulen Assembly Instructions Mounting the base plate and cover for mounting pillars	2504011	01-07/17		 0.2 MB
Instructions de Montage Montage de l'embase et du capot pour les colonnes de montage	2504011	01-07/17		 0.2 MB
Instrucciones de Montaje Montaje de la placa de base y de la cubierta en pilares de montaje	2504011	01-07/17		 0.2 MB

## Catalogs

- Light grids and light curtains LCA Barreras fotoeléctricas y cortinas fotoeléctricas LCA Barrières photoélectriques et rideaux lumineux LCA Lichtgitter und Lichtvorhänge LCA

	Doc. no.	Version	Language	Download
Lichtgitter und Lichtvorhänge LCA	157084	03-03/18		 2.5 MB
Barrières photoélectriques et rideaux lumineux LCA	157086	03-03/18		 2.5 MB
Barreras fotoeléctricas y cortinas fotoeléctricas LCA	157087	03-03/18		 2.5 MB
Light grids and light curtains LCA	157085	03-03/18		 2.5 MB