

## ITEM 156894 AE-OS-SC-1000-156894

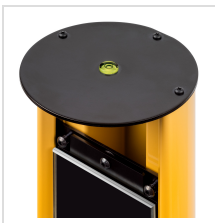
Description	Technical data	Accessories	Downloads
-------------	----------------	-------------	-----------



### Features

- › Mounting pillar with deflection mirror for light grids and light curtains LCA
- › For protective field heights from 160 - 610 mm or for 2 beams
- › Protects against damage
- › Straightforward adjustment using spherical circular level in the cover

### Circular level in the cover



› Figure

### Mechanical values and environment

Height	1000 mm
--------	---------

Number of mirrors	1
Optical power reduction	15 %
Height of the protective field	610 mm <sup>[1]</sup>

[1] 2 beams , 310, 460 and 610mm

## Mounting accessories

✓ Socket for mounting pillars 202 x 224 x 55 mm



**156884** AM-OS-P-AA-156884

✓ Features

- › Socket for mounting pillars
- › Spring-mounted floor plate made of steel
- › Improved compensation of unevenness
- › Adjustable via adjusting screws
- › Height 55 mm

✓ Socket for mounting pillars 202 x 224 x 34 mm



**156885** AM-OS-P-AB-156885

✓ Features

- › Socket for mounting pillars
- › Adjustable via adjusting screws
- › Height 34 mm

## Instructions

✓ Instrucciones de Montaje Montaje de la placa de base y de la cubierta en pilares de montaje

	Doc. no.	Version	Language	Download
Montageanleitung Montage der Grundplatte und der Abdeckung für Montagesäulen Assembly Instructions Mounting the base plate and cover for mounting pillars	2504011	01-07/17		0.2 MB
Instructions de Montage Montage de l'embase et du capot pour les colonnes de montage	2504011	01-07/17		0.2 MB
Instrucciones de Montaje Montaje de la placa de base y de la cubierta en pilares de montaje	2504011	01-07/17		0.2 MB









✓ Instrucciones de Montaje Pilar de montaje con espejo de desviación AE-OS-SC-1000-1970 en zócalo AM-OS-P-AA/AB

**Doc. no. Version Language Download**

Montageanleitung Montagesäule mit Umlenkspiegel AE-OS-SC-1000-1970 auf Sockel AM-OS-P-AA/AB Assembly Instructions Mounting pillar with deflection mirror AE-OS-SC-1000-1970 on socket AM-OS-P-AA/AB	2504015	01-07/17		 0.2 MB
Instructions de Montage Colonne de montage avec miroir de renvoi d'angle AE-OS-SC-1000-1970 sur socle AM-OS-P-AA/AB	2504015	01-07/17		 0.2 MB
Instrucciones de Montaje Pilar de montaje con espejo de desviación AE-OS-SC-1000-1970 en zócalo AM-OS-P-AA/AB	2504015	01-07/17		 0.2 MB

## Catalogs

- Light grids and light curtains LCA Barreras fotoeléctricas y cortinas fotoeléctricas LCA Barrières photoélectriques et rideaux lumineux LCA Lichtgitter und Lichtvorhänge LCA

	Doc. no.	Version	Language	Download
Lichtgitter und Lichtvorhänge LCA	157084	03-03/18		 2.5 MB
Barrières photoélectriques et rideaux lumineux LCA	157086	03-03/18		 2.5 MB
Barreras fotoeléctricas y cortinas fotoeléctricas LCA	157087	03-03/18		 2.5 MB
Light grids and light curtains LCA	157085	03-03/18		 2.5 MB