

ITEM 072971 HWA100T100G05/V10

| Description | Technical data | Accessories | Downloads |
|-------------|----------------|-------------|-----------|
|-------------|----------------|-------------|-----------|



Features

- › 100 detent positions per revolution
- › Mechanical detent mechanism
- › 100 pulses per revolution
- › Center point fixing

Notes

- › Output G05 suitable for Fanuc control systems
- › Packaging unit 10 pieces

Approvals



Mechanical values and environment

| | |
|--|------------------------------------|
| Material | Plastic |
| Weight | |
| | Net 0.1 |
| Ambient temperature | 0 ... 50 °C |
| Atmospheric humidity (condensation not permissible) | 0.8 |
| Degree of protection | |
| | IEC 529 IP65 [1] |
| | acc. to NEMA 250 250-12 [2] |
| Mechanical life | 1×10^6 |
| Connection | Screw terminals 4-pole |
| Detent positions per revolution | 100 |

Electrical connection ratings

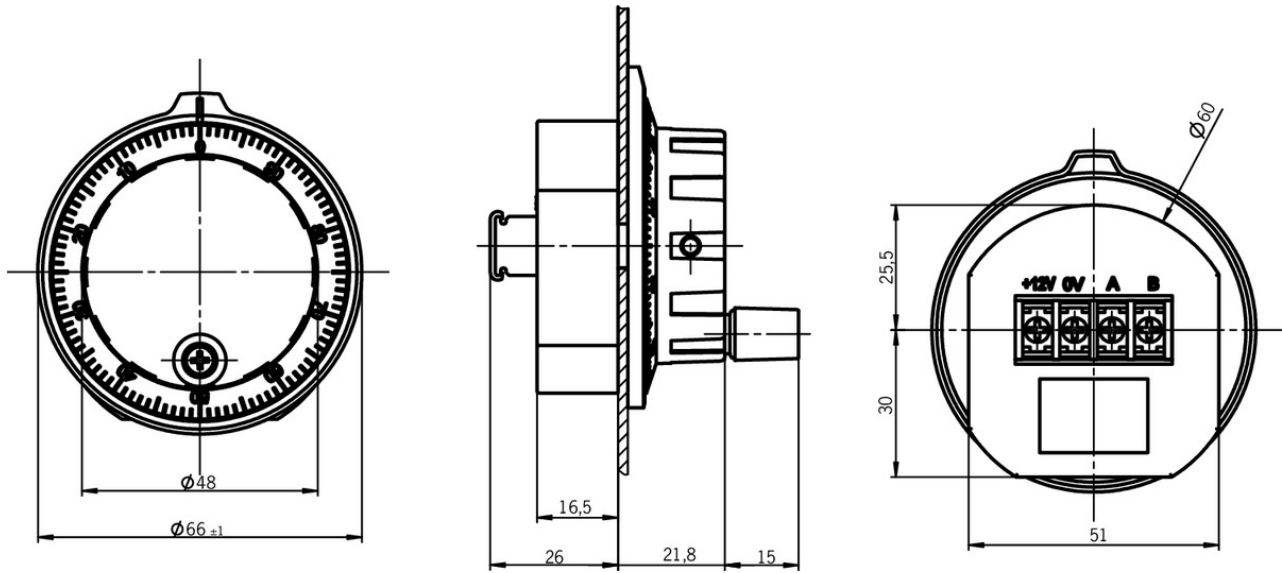
| | |
|-----------------------|------------------------------|
| Operating voltage DC | 5 V DC -10% ... 10% |
| Current consumption | |
| | Without load max.80 mA |
| Type of output | Push-pull |
| Pulses per revolution | 2x100 |
| Output voltage | |
| | High(1) at 20 mAmin.4,0 V DC |
| | Low(0) at 20 mAmax.0,5 V DC |

Miscellaneous

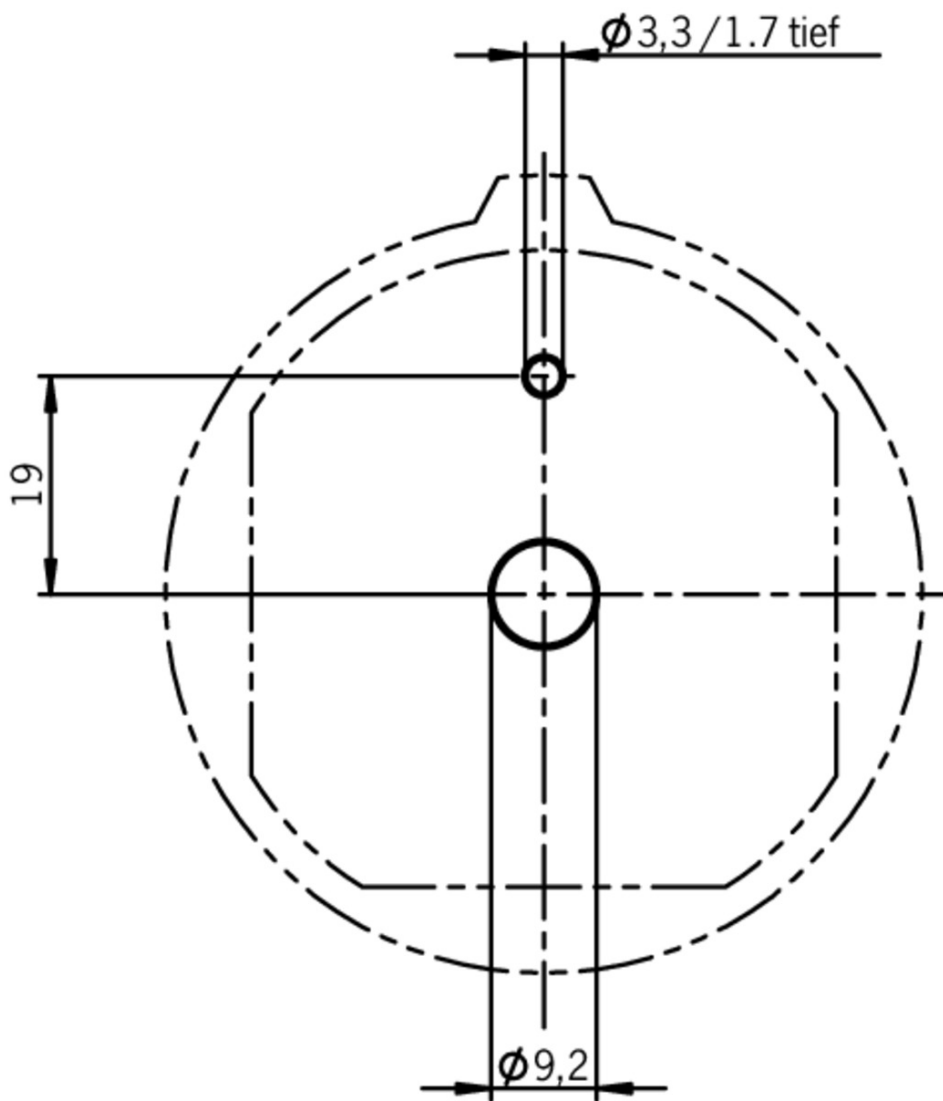
| | |
|--------------------|-----------------------------------|
| Additional feature | |
| | Front panel thickness 1.5 - 2.0mm |
| Detent mechanism | Mechanical |
| Packaging unit | 10 |

[1, 2] On the front

Dimension drawing

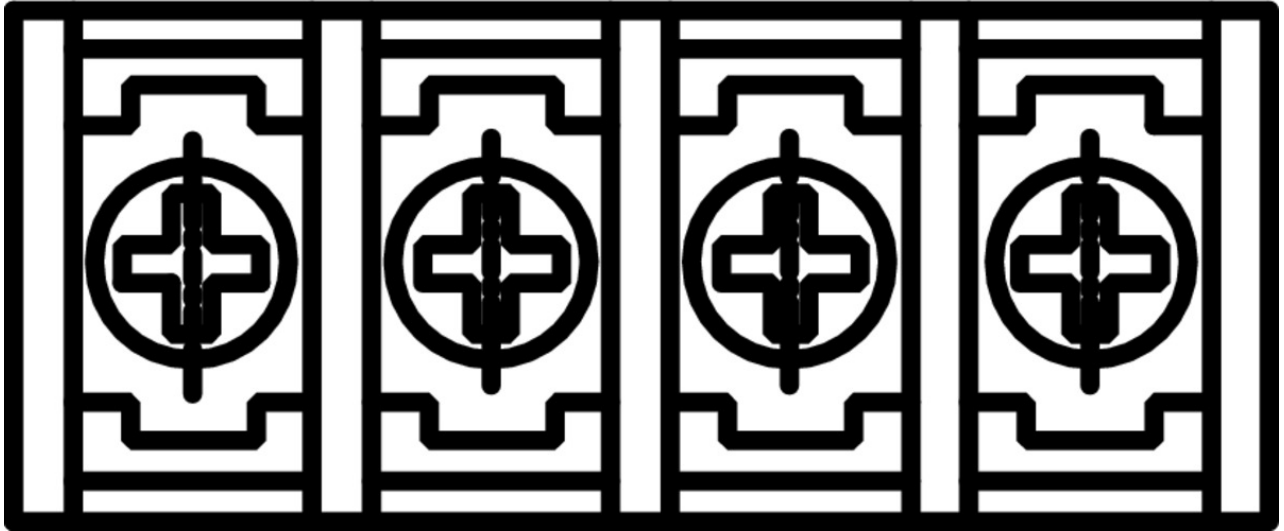


Dimension drawing

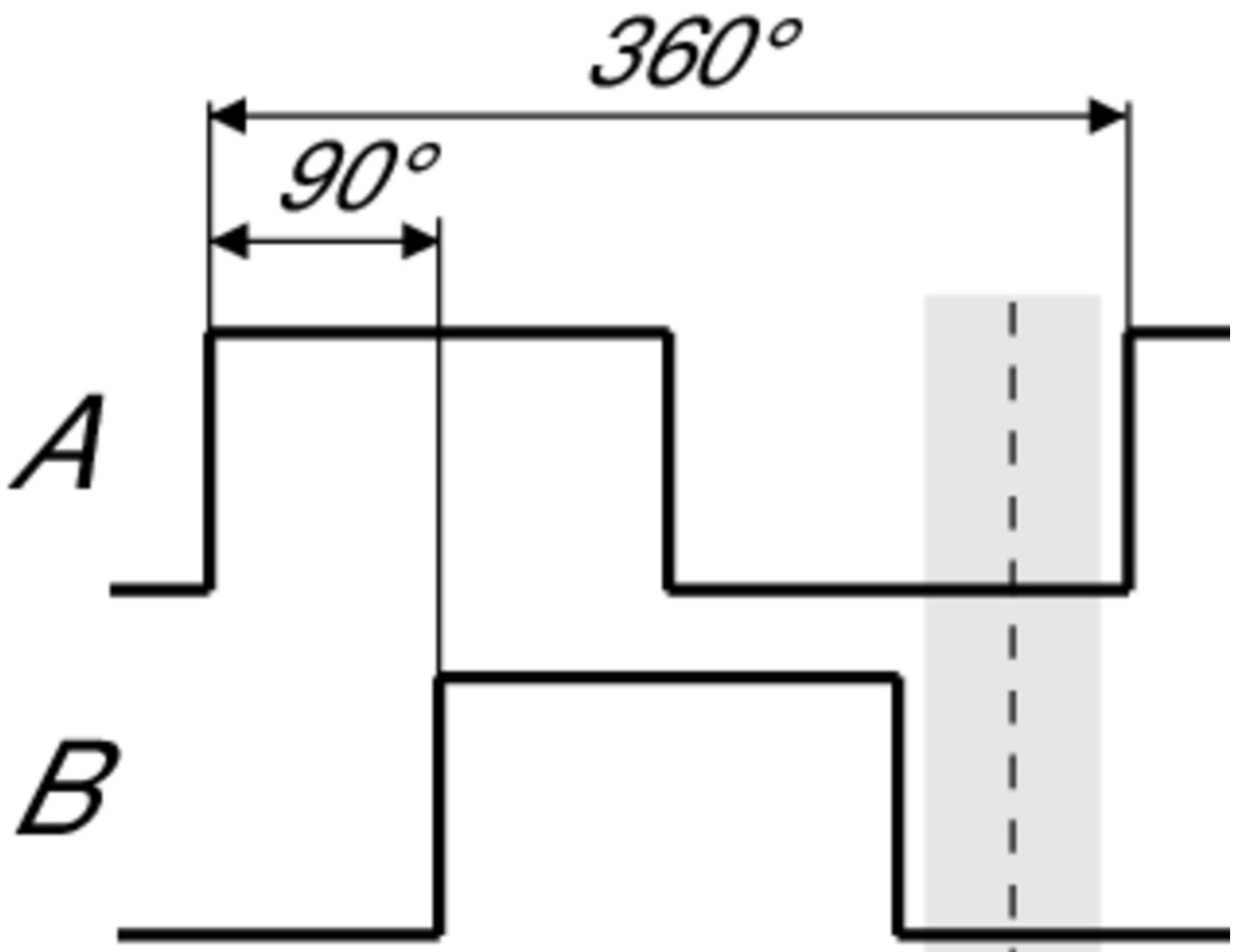


Terminal assignment

$+U_B$ $0V$ A B








Ausgangssignale









Instructions

▼ Betriebsanleitung Elektronisches Handrad HWA/HWB

| | Doc. no. | Version | Language | Download |
|---|----------|----------|---|--|
| Betriebsanleitung Elektronisches Handrad HWA/HWB | 072993 | 02-08/06 |  |  1.2 MB |
| Mode d'emploi de la manivelle électronique HWA/HWB | | |  | |
| Istruzioni di impiego volantino elettronico HWA/HWB | | |  | |
| Operating instructions for electronic handwheel HWA/HWB | | |  | |

Catalogs

▼ Handbediengeräte/Handräder Hand-Held Pendant Stations/Handwheels Pupitres portables/Manivelles

| | Doc. no. | Version | Language | Download |
|---------------------------------------|----------|----------|---|--|
| Handbediengeräte/Handräder | 098619 | 08-09/17 |  |  3.0 MB |
| Pupitres portables/Manivelles | 111529 | 08-09/17 |  |  3.0 MB |
| Hand-Held Pendant Stations/Handwheels | 099443 | 08-09/17 |  |  3.0 MB |

CAD data

CAD data for this item on TraceParts