

ITEM 087190 SN02W12-502-MC1900

Description	Technical data	Accessories	Downloads
-------------	----------------	-------------	-----------



Features

- › plunger spacing 12 mm
- › Upright housing, small flange
- › Degree of protection IP67 according to IEC 60529

Switching elements

ES 502 E Snap-action switching contact 1 NC + 1 NO

Approvals



Mechanical values and environment

Contact bounce time	< 3ms
Contact closing time	< 4ms

Design	Upright
Housing material	Die-cast aluminum, anodized
Weight	
	Net 0,4 kg
Ambient temperature	-25 ... 60 °C
Degree of protection	IP40
Mechanical life	30 x 10 ⁶
Contact material	Silver alloy, gold flashed
Switching principle	Snap-action switching contact
Plunger spacing	12 mm
Installation position	Any
Number of switching elements	2
Number of NC contacts	2
Number of NO contacts	2
Connection	
	2 x M20 x 1.5
Approach speed	
	max. 0,01 ... 10 m/min
Actuating element	Domed plunger ^[1]
Actuating force	min.20 N
Operating point accuracy	± 0.2 ^[2]

Electrical connection ratings

Rated thermal current I _{th}	8 A
Utilization category according to EN 60947-5-1	
	AC-15 6A 230V
	DC-13 6A 24V
	AC-12 8 A, 250 V
Short circuit protection according to IEC 60269-1	
	(Fuse) 8A gG
Rated insulation voltage U _i	250 V
Rated impulse withstand voltage U _{imp}	2,5 kV
Switching current	
	Min. at DC 12V min.10 mA
Connection cross-section	0,34 ... 1,5 mm ²

Miscellaneous

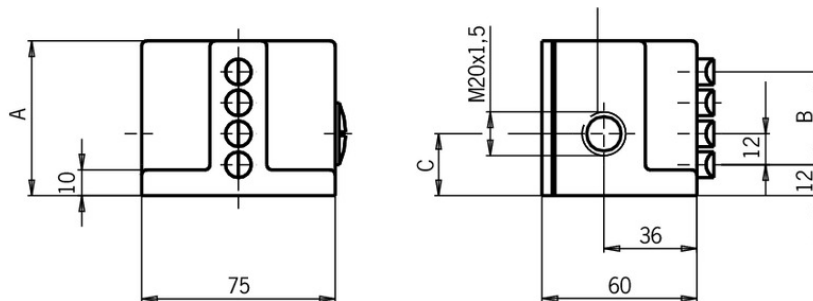
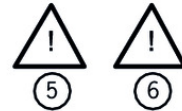
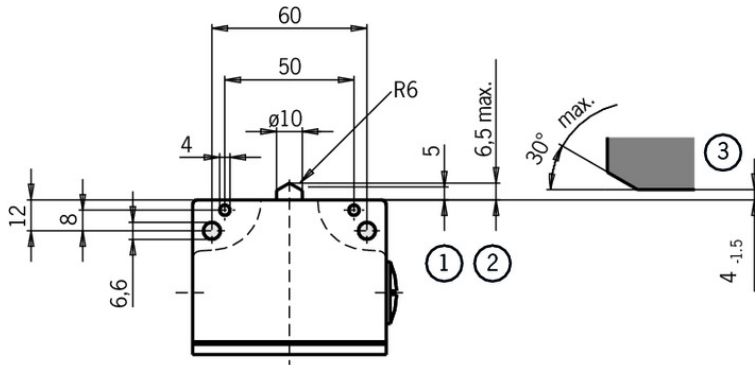
C number	
	C1900 ^[3]

[1] Attention: On side approach reduced mechanical life is to be expected.

[2] The reproducible switching point accuracy refers to the axial travel of the plunger after the switching element ES 502 E has been run-in with approx. 2000 operating cycles.

[3] With low temperature grease, without diaphragm

Dimension drawing



3	48	24	24
2	36	12	19
n	A	B	C
Anzahl der Stößel			
4			

Legende

1 Operating point

2 Free position

3 Dog

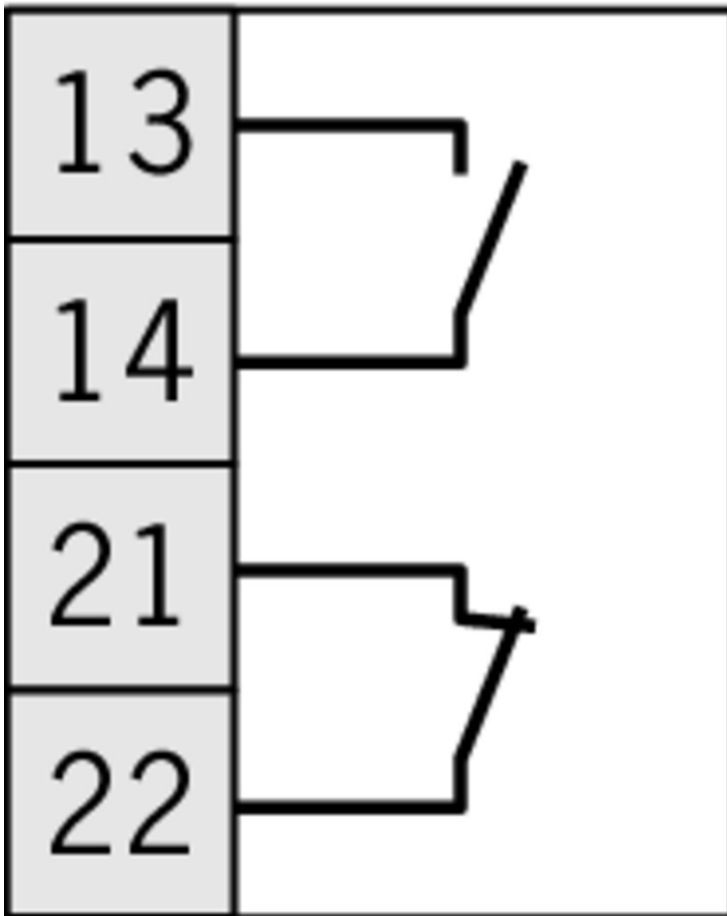
4 n Number of plungers

5 With low temperature grease, without diaphragm

6 On side approach reduced mechanical life is to be expected.





Switching element

ES 502 E



Instructions

✓ Betriebsanleitung Präzisions-Reihengrenztaster SN 12/16 mm

	Doc. no.	Version	Language	Download
Betriebsanleitung Präzisions-Reihengrenztaster SN 12/16 mm	032308	08-07/16		 1.2 MB
Mode d'emploi Boîtiers multipistes de précision SN 12/16 mm				
Istruzioni di impiego Finecorsa multipli di precisione SN 12/16 mm				
Operating Instructions Precision Multiple Limit Switches SN 12/16 mm			