

AO000145**LED-LIGHTS • ADDITIONAL LIGHTS FOR CAMERA SYSTEMS**

For any kind of inspection tasks with a camera sensor the lighting is essential, as only high-contrast images enable reproducible evaluations. Here the lighting has a decisive influence. The choice depends on different factors such as the distance to the test object, its size, the component criteria to be tested or the expected environmental conditions.

**MECHANICAL DATA**

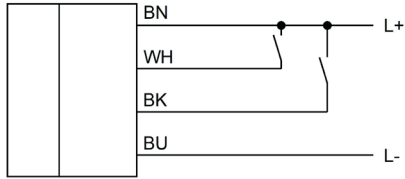
Ambient temperature (MAX)	50 °C
Degree of protection (IP)	IP65
Front screen material	PMMA
Height	100 mm
Housing design	Cuboid
Housing material	Aluminium
Number of wires	4
Width	100 mm

ELECTRICAL DATA

Max. current consumption	450 mA
Nominal supply voltage	24 V ... 24 V
Reverse polarity protection	Yes
Short-circuit-proof	Yes
Type of electrical connection	Cable
Voltage type	DC

OPTICAL DATA

Actual camera illumination	Yes
Light source	Polarity free red light
Light version	Surface area light
Wavelength of the lamp	660 nm

CONNECTION

Colors: BN (brown), WH (white), BU (blue), BK (black)

Functions:

DIMENSIONAL DRAWING**INSTALLATION**

Mounting / Installation may only be carried out by a qualified electrician!

DISPOSAL**SAFETY WARNINGS**

Before initial operation, please make sure to follow all safety instructions that may be provided in the product information!