

AO000375

LED-LIGHTS • ADDITIONAL LIGHTS FOR CAMERA SYSTEMS

For any kind of inspection tasks with a camera sensor the lighting is essential, as only high-contrast images enable reproducible evaluations. Here the lighting has a decisive influence. The choice depends on different factors such as the distance to the test object, its size, the component criteria to be tested or the expected environmental conditions.



MECHANICAL DATA

Ambient temperature	-10 °C ... 40 °C
Degree of protection (IP)	IP50
Front screen material	PMMA
Height	60 mm
Housing design	Cuboid
Housing material	Aluminium
Width	60 mm

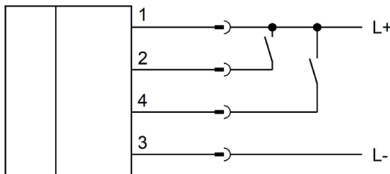
ELECTRICAL DATA

Lamp power	7 W
Nominal supply voltage	10 V ... 30 V
Type of electrical connection	M5-connector
Voltage type	DC

OPTICAL DATA

Actual camera illumination	Yes
Light source	White light
Light version	Surface area light

CONNECTION



Colors: 1 = BN (brown), 2 = WH (white), 3 = BU (blue), 4 = BK (black)

Functions:

DIMENSIONAL DRAWING

INSTALLATION



Mounting / Installation may only be carried out by a qualified electrician!

DISPOSAL



SAFETY WARNINGS

Before initial operation, please make sure to follow all safety instructions that may be provided in the product information!