

AO000408

ACCESSORIES • LENSES

Entocentric lenses have a fixed or variable (zoom lenses) opening angle of the optics to the object. They are used for presence detection and assembly control, pick and place applications, feature inspections, color applications, OCR-recognition and code reading. Due to their perspective error they are not suitable for measurement applications. Telecentric lenses are special optical lenses that are characterized by the fact that their entrance or exit pupil are located at infinity. They are mainly used for measurement tasks with high repeatability, especially when measuring is to be made without perspective distortion at fluctuating object positions (in excess of the field of view in x and y direction).



MECHANICAL DATA

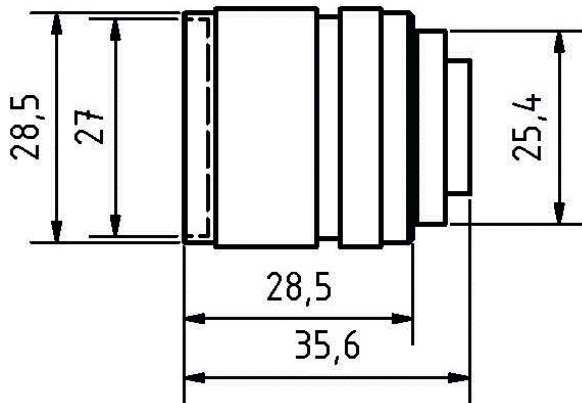
Sensor diameter	29.5 mm
Sensor length	28.5 mm
With C-mount thread	Yes

ELECTRICAL DATA

Aperture control	Manual
Aperture range	12
Aperture range	12
Lens connection	12.7 mm (1/2 inch)

OPTICAL DATA

Aperture number	1.4
Focal distance range	12 mm ... 12 mm
Lens type	Entocentric
Minimum distance	250 mm
Motor zoom	No
Resolution capacity	Up to 2 megapixel

DIMENSIONAL DRAWING**INSTALLATION**

Mounting / Installation may only be carried out by a qualified electrician!

DISPOSAL**SAFETY WARNINGS**

Before initial operation, please make sure to follow all safety instructions that may be provided in the product information!