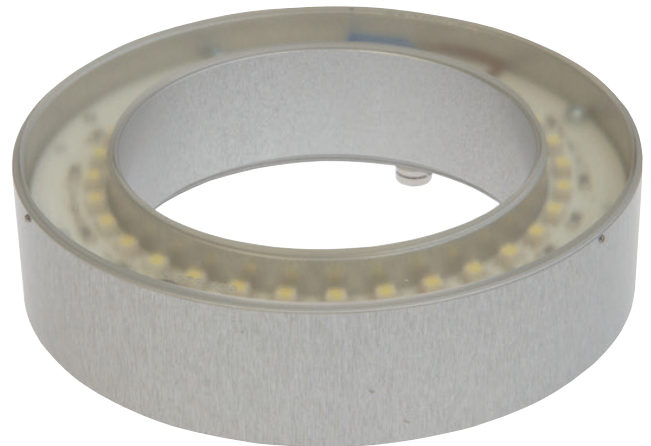


AO000449**LED-LIGHTS • ADDITIONAL LIGHTS FOR CAMERA SYSTEMS**

For any kind of inspection tasks with a camera sensor the lighting is essential, as only high-contrast images enable reproducible evaluations. Here the lighting has a decisive influence. The choice depends on different factors such as the distance to the test object, its size, the component criteria to be tested or the expected environmental conditions.

**MECHANICAL DATA**

Ambient temperature (MAX)	50 °C
Degree of protection (IP)	IP67
Diameter	101 mm
Front screen material	Acrylic glass
Housing design	Round
Housing material	Aluminium
Length	24 mm
Wet area	Yes

ELECTRICAL DATA

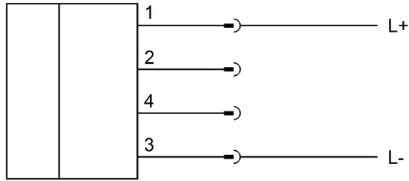
Max. current consumption	165 mA
Nominal supply voltage	24 V ... 24 V
Number of pins	4
Type of electrical connection	Connector M8
Voltage type	DC

OPTICAL DATA

Actual camera illumination	Yes
Color temperature	6500 K
Light source	White light
Light version	Ring lights
Number of LEDs	32
Radiation angle	120 °

OTHER DATA

Changeable fronts	Yes
Harsh environmental conditions	Yes
Mounting on lenses	Yes

CONNECTION

Colors: 1 = BN (brown), 2 = WH (white), 3 = BU (blue), 4 = BK (black)

Functions: 1 = L+, 2 = n. c., 3 = L-, 4 = n. c.

DIMENSIONAL DRAWING**INSTALLATION**

Mounting / Installation may only be carried out by a qualified electrician!

DISPOSAL**SAFETY WARNINGS**

Before initial operation, please make sure to follow all safety instructions that may be provided in the product information!