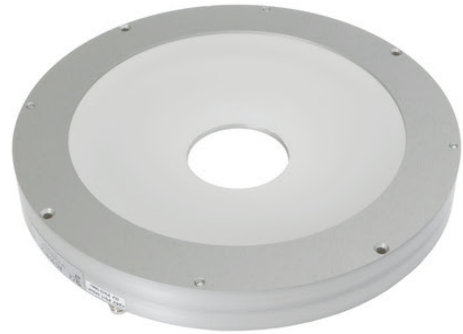


**AO000530**

**LED-LIGHTS • ADDITIONAL LIGHTS FOR CAMERA SYSTEMS**

For any kind of inspection tasks with a camera sensor the lighting is essential, as only high-contrast images enable reproducible evaluations. Here the lighting has a decisive influence. The choice depends on different factors such as the distance to the test object, its size, the component criteria to be tested or the expected environmental conditions.



**MECHANICAL DATA**

Ambient temperature (MAX)	50 °C
Degree of protection (IP)	IP00
Diameter	172 mm
Housing design	Round
Housing material	Aluminium
Length	20 mm
Light head material	Aluminium
Type of lamp stand	Screw-on plate

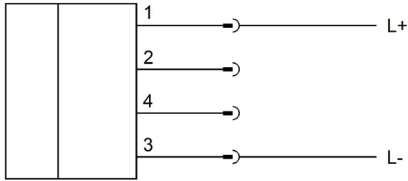
**ELECTRICAL DATA**

Max. current consumption	520 mA
Nominal supply voltage	24 V ... 24 V
Number of pins	4
Protection class	III
Type of electrical connection	Connector M8
Voltage type	DC

**OPTICAL DATA**

Actual camera illumination	Yes
Color temperature	6500 K
Lamp	LED
Light source	White light
Light version	Dome light
Number of LEDs	128
Radiation angle	120 °
With lamp	Yes

## CONNECTION



**Colors:** 1 = BN (brown), 2 = WH (white), 3 = BU (blue), 4 = BK (black)

**Functions:** 1 = L+, 2 = n. c., 3 = L-, 4 = n. c.

## DIMENSIONAL DRAWING

### INSTALLATION



Mounting / Installation may only be carried out by a qualified electrician!

### DISPOSAL



### SAFETY WARNINGS

Before initial operation, please make sure to follow all safety instructions that may be provided in the product information!