

AO98E100**LED-LIGHTS • ADDITIONAL LIGHTS FOR CAMERA SYSTEMS**

For any kind of inspection tasks with a camera sensor the lighting is essential, as only high-contrast images enable reproducible evaluations. Here the lighting has a decisive influence. The choice depends on different factors such as the distance to the test object, its size, the component criteria to be tested or the expected environmental conditions.

**MECHANICAL DATA**

Ambient temperature (MAX)	40 °C
Degree of protection (IP)	IP51
Front screen material	Acrylic glass
Height	20 mm
Housing design	Cuboid
Housing material	Aluminium
Length	520 mm
Width	178 mm

ELECTRICAL DATA

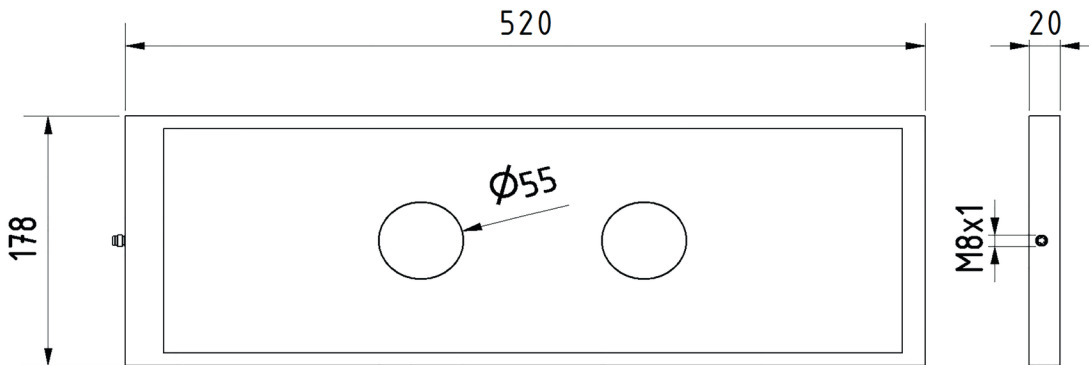
Lamp power	31.2 W
Max. current consumption	190 mA
Nominal supply voltage	24 V ... 24 V
Number of pins	4
Type of electrical connection	Connector M8
Voltage type	DC

OPTICAL DATA

Actual camera illumination	Yes
Color temperature	5000 K
Light source	Cold white
Light version	Surface area light
Radiation angle	120 °
With lamp	Yes

OTHER DATA

Risk groups	0
-------------	---

DIMENSIONAL DRAWING**INSTALLATION**

Mounting / Installation may only be carried out by a qualified electrician!

DISPOSAL**SAFETY WARNINGS**

Before initial operation, please make sure to follow all safety instructions that may be provided in the product information!