

## AO98E123

### LED-LIGHTS • ADDITIONAL LIGHTS FOR CAMERA SYSTEMS

For any kind of inspection tasks with a camera sensor the lighting is essential, as only high-contrast images enable reproducible evaluations. Here the lighting has a decisive influence. The choice depends on different factors such as the distance to the test object, its size, the component criteria to be tested or the expected environmental conditions.



#### MECHANICAL DATA

Ambient temperature (MAX)	40 °C
Degree of protection (IP)	IP40
Front screen material	Acrylic glass
Height	30 mm
Housing design	Rod
Housing material	Aluminium
Length	60 mm
Width	172 mm

#### ELECTRICAL DATA

Lamp power	6 W
Max. current consumption	250 mA
Nominal supply voltage	24 V ... 24 V
Number of pins	3
Number of pins of second connection	4
Type of 2nd electrical connection	Connector M8
Type of electrical connection	Connector M8
Voltage type	DC

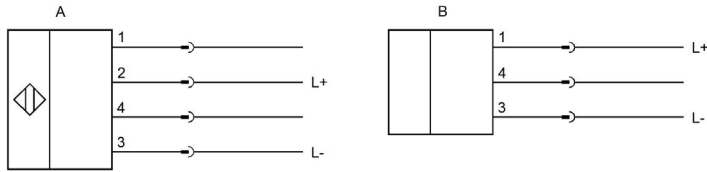
#### OPTICAL DATA

Actual camera illumination	Yes
Color temperature	5000 K
Light source	White light
Light version	Transmitted light lamp
With lamp	Yes

#### OTHER DATA

Average nominal service life	50000 h
Risk groups	0

## CONNECTION

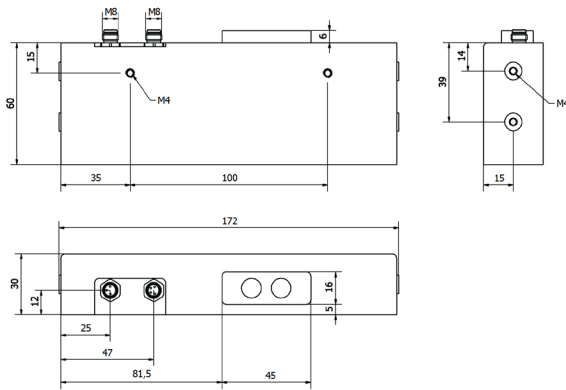


**Colors:** A: 1 = BN (brown), 2 = WH (white), 3 = BU (blue), 4 = BK (black)

B: 1 = BN (brown), 3 = BU (blue), 4 = BK (black) **Functions:** A: 1 = n. c., 2 = L+, 3 = L-, 4 = n. c.

B: 1 = L+, 3 = L-, 4 = n .c.

## DIMENSIONAL DRAWING



## INSTALLATION



Mounting / Installation may only be carried out by a qualified electrician!

## DISPOSAL



## SAFETY WARNINGS

Before initial operation, please make sure to follow all safety instructions that may be provided in the product information!