

**AY000020**

**ACCESSORIES • MOUNTING**



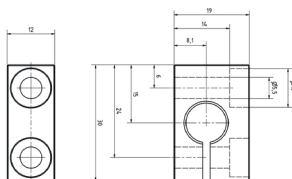
**MECHANICAL DATA**

For sensor	10mm
Material	Aluminium
Mounting type	Screw mounting
Nominal diameter	10 mm
Surface	Anodised
To fix to	Wall mounting

**OTHER DATA**

Suitable for fire protection areas	No
------------------------------------	----

**DIMENSIONAL DRAWING**



**INSTALLATION**



Mounting / Installation may only be carried out by a qualified electrician!

**DISPOSAL**



## **SAFETY WARNINGS**

Before initial operation, please make sure to follow all safety instructions that may be provided in the product information!