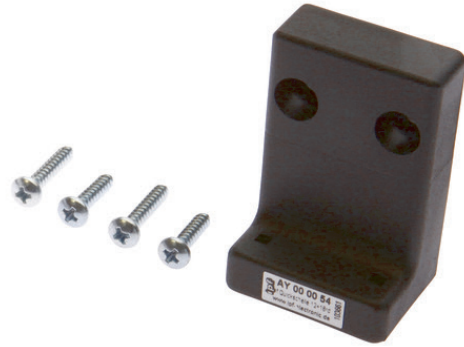


AY000054

ACCESSORIES • MOUNTING



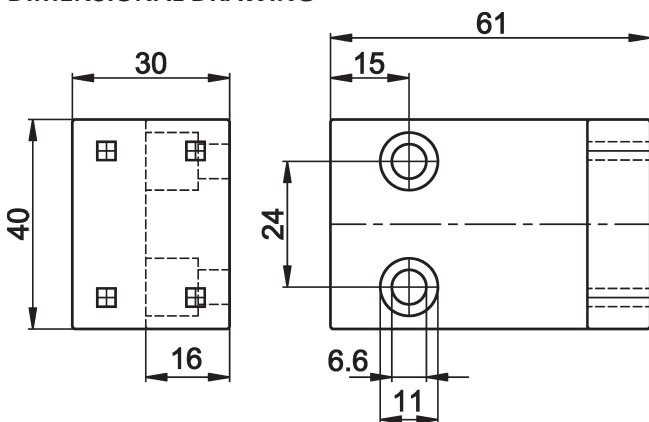
MECHANICAL DATA

Angle	90 °
Height	61 mm
Length	30 mm
Material	Plastic
Mounting type	Screw
Number of boreholes	2
Version	Mounting angle bracket
Weight	0.03 kg
Width	40 mm

OTHER DATA

Scope of delivery	Mounting material for holder
-------------------	------------------------------

DIMENSIONAL DRAWING



INSTALLATION

DISPOSAL



Mounting / Installation may only be carried out by a qualified electrician!



SAFETY WARNINGS

Before initial operation, please make sure to follow all safety instructions that may be provided in the product information!