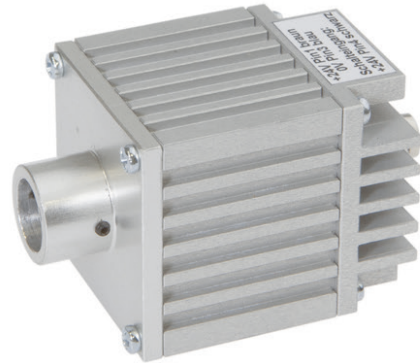


**EQ410170**

**LED-LIGHTS • ADDITIONAL LIGHTS FOR CAMERA SYSTEMS**

For any kind of inspection tasks with a camera sensor the lighting is essential, as only high-contrast images enable reproducible evaluations. Here the lighting has a decisive influence. The choice depends on different factors such as the distance to the test object, its size, the component criteria to be tested or the expected environmental conditions.



**MECHANICAL DATA**

Ambient temperature (MAX)	50 °C
Degree of protection (IP)	IP00
Front screen material	Acrylic glass
Height	33 mm
Housing design	Cuboid
Housing material	Aluminium
Length	41 mm
Light head material	Aluminium
Type of lamp stand	Screw-on plate
Width	33 mm
With fiber optics connection	Yes

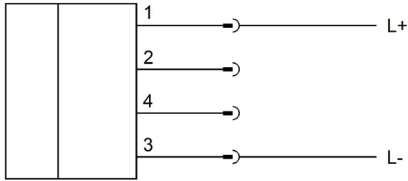
**ELECTRICAL DATA**

Max. current consumption	130 mA
Nominal supply voltage	24 V ... 24 V
Number of pins	4
Protection class	III
Type of electrical connection	Connector M8
Voltage type	DC

**OPTICAL DATA**

Actual camera illumination	Yes
Color temperature	5000 K
Lamp	LED
Light source	White light
Light version	Spotlight
Number of LEDs	16
Radiation angle	140 °
With lamp	Yes

## CONNECTION



**Colors:** 1 = BN (brown), 2 = WH (white), 3 = BU (blue), 4 = BK (black)

**Functions:** 1 = L+, 2 = n. c., 3 = L-, 4 = n. c.

## DIMENSIONAL DRAWING

### INSTALLATION



Mounting / Installation may only be carried out by a qualified electrician!

### DISPOSAL



### SAFETY WARNINGS

Before initial operation, please make sure to follow all safety instructions that may be provided in the product information!