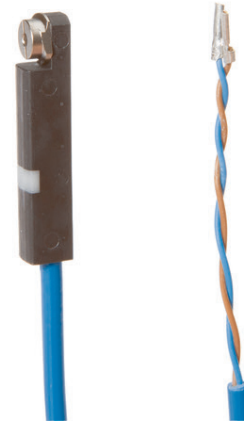


MZ07A210

MAGNETIC SENSORS • SENSORS FOR PNEUMATIC CYLINDERS

For many tasks in the field of automation technology, it is necessary to recognize the motional processes in pneumatic and hydraulic cylinders and to detect the position of the piston with precision. For this, magnetic cylinder sensors are used.



MECHANICAL DATA

Ambient temperature	-25 °C ... 70 °C
Cable length	2 m
Degree of protection (IP)	IP67
Housing design	Cuboid
Housing material	Plastic
Increased ambient temperatures > 80°C	No
Material of cable sheath	PVC
Metal housing	No
Mounting access, cylinder groove	From the top
Number of wires	2
Sensor height	6 mm
Sensor length	32 mm
Sensor surface position	Border area of the device
Sensor width	5 mm
Strong vibration / motion	No
Wire cross section	0.14 mm ²

ELECTRICAL DATA

Cross/short circuit identification possible	No
Hysteresis	1 mm
Low sensitivity	No
Low switching hysteresis	Yes
Max. output current	2.1 mA
No-load current	1.2 mA
Operating voltage	8.2 V ... 8.2 V
Reed contact	No
Relative repeat accuracy	0.1 mm
Reverse polarity protection	No
Sensor surface (active)	Border area / edge area
Setting via teach-in	No
Short-circuit-proof	No

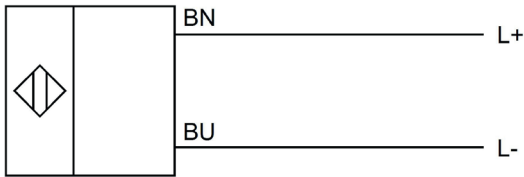
ELECTRICAL DATA

Suitable for safety functions	No
Switching frequency	1000 Hz
Two switching points	No
Type of electrical connection	Cable
Type of switching output	NAMUR
Voltage type	DC
With LED display	Yes
With monitoring function of downstream devices	No

OTHER DATA

Cylinder sensors	Yes
Cylinder version	With T-groove
Explosion protection category for dust	ATEX dust-ex-protection, Cat. 1D
Explosion protection category for gas	ATEX gas-ex-protection, Cat. 1G
Harsh environmental conditions	No
Metallic sensor surface	No
Oil and cooling lubricants	No
Short travel path	No
SIL in acc. with IEC 61508	2

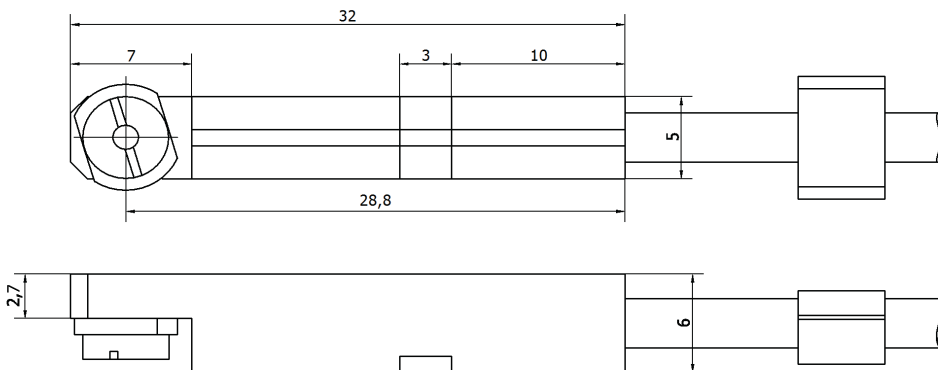
CONNECTION



Colors: BN (brown), BU (blue)

Functions: BN = L+, BU = L-

DIMENSIONAL DRAWING



INSTALLATION

DISPOSAL



Mounting / Installation may only be carried out by a qualified electrician!



SAFETY WARNINGS

Before initial operation, please make sure to follow all safety instructions that may be provided in the product information!