



## ELECTRICAL DATA

Setting procedure	Parameterization
Switching frequency	400 Hz
Type of analog output	0 V ... 10 V
Type of communication interface	Connector M5
Type of communication interface, transmitter + receiver	Connector M9
Type of electrical connection	Connector M9
Type of input voltage	DC
Type of plug-in contact, communication interface	Female (socket)
Type of plug-in contact, communication interface	Female (socket)
Type of switching output	PNP/NPN
Voltage type	DC
With communication interface, RS-232	Yes
With time function	No

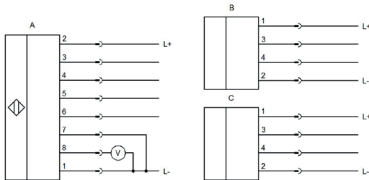
## OPTICAL DATA

Filter	Interference filter
Light beam form	Line
Light source	Laser diode, red light
Line sensor	Yes
Resolution	16 µm
Wavelength of the sensor	670 nm

## OTHER DATA

Scope of delivery of the one-way system	Receiver
---	----------

## CONNECTION



**Colors:** A: M9: 1 = WH (white), 2 = BN (brown), 3 = GN (green), 4 = YE (yellow), 5 = GY (gray), 6 = PK (pink), 7 = BU (blue), 8 = RD (red)

**Functions:** A: M9: 1 = L-, 2 = L+, 3 = in 0 (ext. trigger), 4 = in 1 (teach/reset), 5 = out 0, 6 = out 1, 7 = L-, 8 = 0-10V

B: M5: 1 = L+, 2 = L-, 3 = RxD, 4 = TxD

C: M8: 1 = L+, 2 = L-, 3 = I-Control, 4 = n. c.

## DIMENSIONAL DRAWING

### INSTALLATION



Mounting / Installation may only be carried out by a qualified electrician!

### DISPOSAL



## SAFETY WARNINGS

Before initial operation, please make sure to follow all safety instructions that may be provided in the product information!