

UT121120**ULTRASONIC SENSORS • DIFFUSE REFLECTIONS SENSORS**

Ultrasonic sensors are non-contact and wear-free position switches which can also be used under rough environmental conditions. A key advantage of these devices lies in the fact that the material and the surface characteristics of the objects to be detected can be almost anything. Solids, liquids, grainy materials and powdery materials can be identified without the shape or the color of the object having any influence to the measured result. In addition, the ability to detect transparent materials such as films and fluids is of particular importance. The shape and color of the objects do not influence the result of the detection. The capability to detect transparent films or liquids is also of special importance. Ultrasonic sensors are used for distance measurement (e.g. detection of diameters, loop control), for fill level detection (e.g. silo detection), for positioning and presence detection (e.g. glass pane positioning, film tear check, glass bottle detection)

**MECHANICAL DATA**

Ambient temperature	-10 °C ... 60 °C
Degree of protection (IP)	IP67
Diameter detection	Yes
Housing coating	Nickel-plated
Housing design	Cylinder, screw-thread
Housing material	Brass
Housing material, detail	Brass
Sensor length	70 mm
Thread length	55 mm
Thread pitch	1 mm
Thread size, metric	12

ELECTRICAL DATA

Adjustable measuring range	Yes
Carrier frequency	380 kHz
Max. output current	200 mA
Measuring range length	30 mm ... 200 mm
No-load current	35 mA
Number of switching outputs	1
Relative repeat accuracy	0.25 %
Response/decay time	10 ms
Reverse polarity protection	Yes
Sensing range	30 mm ... 200 mm
Setting procedure	Teach-In
Setting via teach-in	Yes
Short-circuit-proof	Yes
Sound cone (angle of beam spread)	6 °
Sound cone with small angle of beam spread	Yes

ELECTRICAL DATA

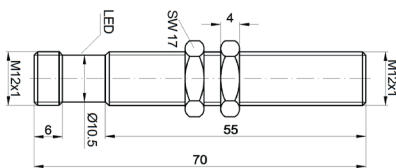
Sound outlet	Axial
Supply voltage	12 V ... 30 V
Synchronization possible	No
Temperature drift	0.18 %
Type of electrical connection	Connector M12
Type of switching function	Normally open contact (NO)
Type of switching output	NPN
Voltage drop	2 V
Voltage type	DC
With LED display	Yes

OPTICAL DATA

High resolution	Yes
-----------------	-----

OTHER DATA

Dead zone	30 mm
Level detection	Yes
Object detection on conveyor systems	Yes

DIMENSIONAL DRAWING

INSTALLATION


Mounting / Installation may only be carried out by a qualified electrician!

DISPOSAL

SAFETY WARNINGS

Before initial operation, please make sure to follow all safety instructions that may be provided in the product information!

