

VK300F73

CONNECTION TECHNOLOGY • CABLE SOCKETS /CONNECTORS TWO-SIDED PRE-ASSEMBLED

ipf cable sockets are used primarily for establishing the electrical connection of sensors. Their features are characterized by rugged design, the highest protection classes (IP67 | IP68 | IP69K) and, if desired, with 360° shielding. With the features: bus-ready, suitable for use with drag chains and robots, resistance to oil and chemicals, resistance to welding sparks, their resistance to cleaning agents or high-pressure and steam-jet cleaning, the expanded temperature range of up to +230°C, the rapid interconnection technology and special data transmission properties, the cable sockets meet all requirements in automation technology.



MECHANICAL DATA

| | |
|--|----------------------|
| Ambient temperature | -30 °C ... 90 °C |
| Cable length | 3 m |
| Cable sheath color | Black |
| Contact body material | CuZn |
| Contact coating material | Gold |
| Degree of protection (IP) | IP67 |
| Housing material | TPU |
| Material of cable sheath | PUR (Polyurethane) |
| Number of wires | 4 |
| Perm. ambient temperature of cable, fixed cable | -40 °C ... 90 °C |
| Perm. ambient temperature of cable, flexible cable | -30 °C ... 90 °C |
| Positioning of cable feed, field side | Angled |
| Positioning of cable feed, housing side | Straight |
| Suitable for trailing chain | Yes |
| Wire assembly | 42 x 0.1mm |
| Wire cross section | 0.34 mm ² |

ELECTRICAL DATA

| | |
|---|-----------------|
| Ampacity | 3 A |
| Flow resistance | 5 mOhm |
| Nominal supply voltage | 24 V |
| Number of pins | 4 |
| Number of pins, housing side | 4 |
| Rated current I _n | 3 A |
| Rated voltage | 24 V |
| Type of cable | Multi-core |
| Type of electrical connection, field side | M8 |
| Type of electrical connection, housing side | M8 |
| Type of plug-in contact, field side | Female (socket) |
| Type of plug-in contact, housing side | Male (plug) |
| With LED display | Yes |

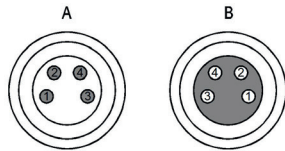
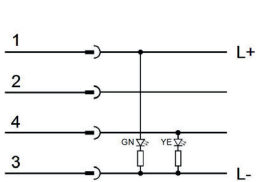
OPTICAL DATA

| | |
|-------------------|---|
| Degree of soiling | 3 |
|-------------------|---|

OTHER DATA

| | |
|---|---------------------------------|
| Flame resistant | In accordance with EN 60332-2-2 |
| Free of LABS | Yes |
| Halogen-free | Yes |
| Hydrolysis-proof | Yes |
| IR-networked | No |
| Oil and cooling lubricants | Yes |
| Ozone and UV-resistant | Yes |
| RoHS-compliant | Yes |
| Silicone-free | Yes |
| Suitable for trailing chain and torsion resistant | Yes |
| Welding area | Yes |

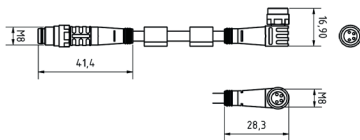
CONNECTION



Colors: A: 1 = BN (brown), 2 = WH (white), 3 = BU (blue), 4 = BK (black)

B: 1 = BN (brown), 2 = WH (white), 3 = BU (blue), 4 = BK (black) **Functions:**

DIMENSIONAL DRAWING



INSTALLATION



Mounting / Installation may only be carried out by a qualified electrician!

DISPOSAL



SAFETY WARNINGS

Before initial operation, please make sure to follow all safety instructions that may be provided in the product information!

