

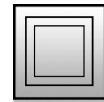
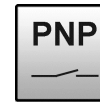
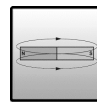
article number **MZ0701A8**
 design **5 x 6.5 x 27mm**

T-groove cylinder sensor surface middle area



- ✓ suitable for food industry
- ✓ fully electronic microsensor
- ✓ robust metal housing (vibration resistant)
- ✓ high locking power
- ✓ quick mounting
- ✓ very short design with integrated amplifier
- ✓ LED-display
- ✓ connection with cable

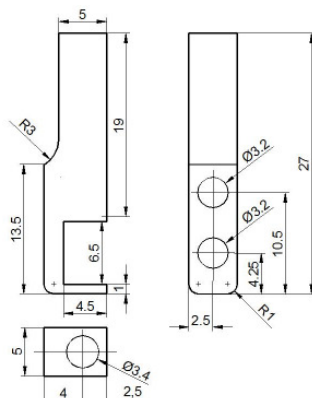
mounting from above, V4A-housing, cable microbe and hydrolysis resistant



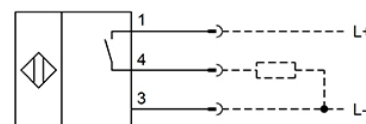
technical data

sensor surface (active)	middle area
output signal	pnp, no
operating voltage	10 ... 30V DC
current consumption (without load)	≤ 10mA
output current (max. load)	150mA
voltage drop (max. load)	2.0V DC
hysteresis	typ. 1mm
repeatability	± 0.1mm
sampling frequency	1kHz
display (signal)	LED yellow
short-circuit protection	+
reverse polarity protection	+
housing material	V4A (stainless steel 1.4571 / 316 Ti)
design	5 x 6.5 x 27mm
operating temperature	-25 ... +70 °C
degree of protection (EN 60529)	IP67
connection	2m cable, PUR, 3-wire
mounting accessories	positive stop AM000076, cable clip AM000087

dimensional drawing



wiring diagram



br=brown (1), bl=blue (3), bk=black (4)

Warning: Never use these devices in applications where the safety of a person depends on their functionality.