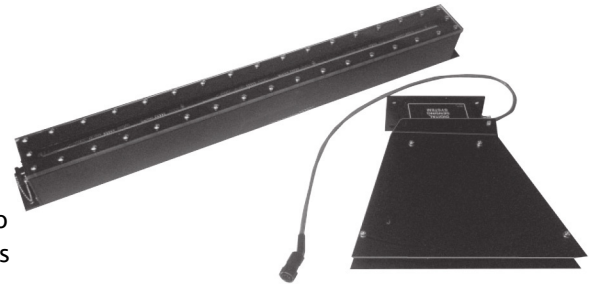




The digital detector from Fife is a non-contact, photoelectric control used to sense the process material edge or centerline in various guiding applications and can provide width measurement for the aforementioned applications or as a stand alone width measurement system.



The detector scans at a rate as high as 200 times per second providing immediate response to changes in line conditions with high accuracy and linearity. The new "On-Line Balance" feature allows emitters to be calibrated on site in local conditions to provide even better accuracy. This also allows for one spare to be used for several different locations on a process line.

The detector consists of two components, an emitter (H3701) and a wide angle receiver (H3710). One emitter can be used as a single edge guide, center guide, or provide width measurement. Alternatively, two emitters can be used to center guide or provide width measurement on materials wider than the combined emitter lengths. The detector is tolerant of moderate shock and vibration a sealed for harsher industrial environments.

SPECIFICATIONS

Power input:

12 V dc at 250 mA

Signal output:

Digital pulse

Operating temperature range:

32-122 F (0-50 C)

Connections:

Plug-in from receiver and interface (cable H3720-20 from interface, H3710-3700-15 from receiver)

Lens:

Lexan

Interface:

Fife H3740

Housing:

Anodized; aluminum extrusion

Gasketing:

closed cell neoprene and buna-N

On-Line Balance Module H3650-100:

Available if on-site calibrations is desired

Cable length (receiver to emitter):

Receiver has 2 feet of cable.

Use 15 foot extension cable P/N H3710-3700-15. All connections are plug-in type.

Accuracy:

Typical ± 0.01 (0.25 mm)/edge

Accuracy:

See table below.

Emitter-Receiver gap:

See table and notes

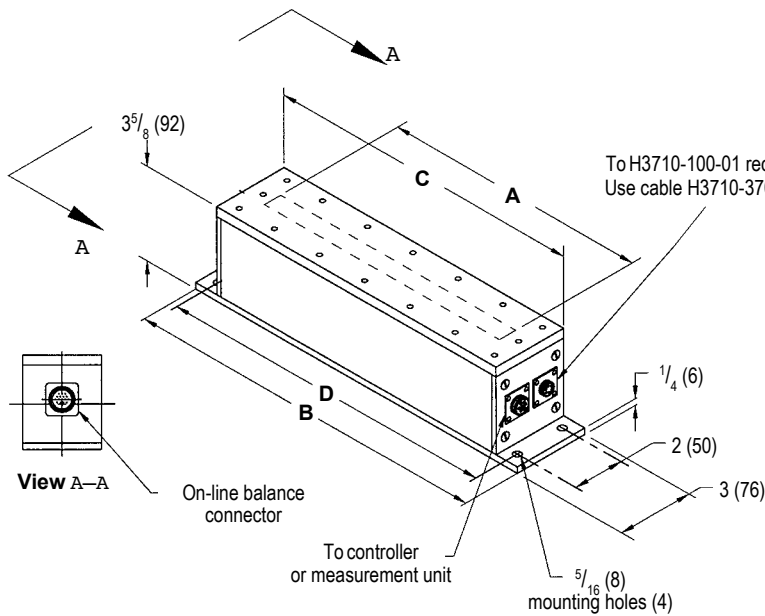
Process passline-emitter lens gap:

2"-3" recommended for measurement accuracy 1" minimum. 15% of emitter-receiver gap maximum (or 12" whichever is less), however, the field of view is reduced as passline is raised.

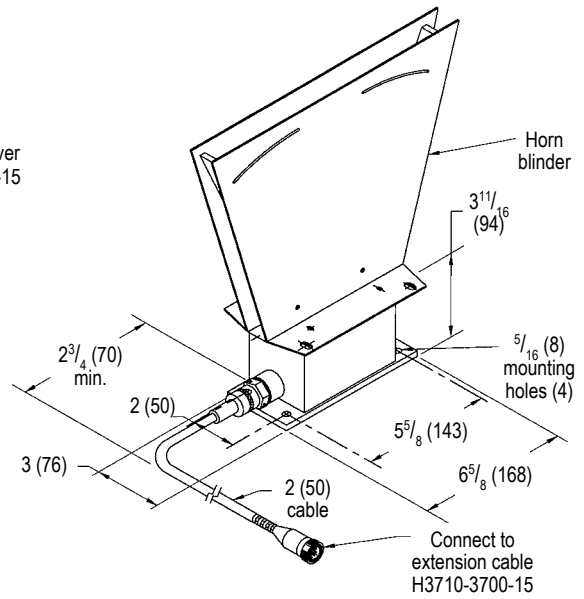
KEY FEATURES

- Edge or center-guide
- Width measurement
- Dust/dirt tolerant
- Simple operation
- Typical accuracy ± 0.01 in. (0.25 mm)
- Reduced maintenance
- Simple plug-in connections

DIMENSIONS Inches (mm)



H3701 SERIES EMITTER



H3710-200-01 RECEIVER (NOTE 4)

Model No. (gaps 60" less)	Dimensions in inches (mm)				Active emitter length	Scan rate	Emitter to Receiver Gap		
	A	B	C	D			Recom- mended gap	Minimum gap (consult factory) (NOTE 2)	Max. gap H3701
H3701-10-14	10 ⁷ / ₈ (276.2)	14 ¹ / ₄ (362)	12 ¹ / ₄ (314.3)	13 ¹ / ₄ (336.6)	10" (254)	200/sec.	20" (508)	20" (508)	80" (2032)
H3701-20-24	20 ⁷ / ₈ (530.2)	24 ¹ / ₄ (616)	22 ¹ / ₄ (568.3)	23 ¹ / ₄ (590.6)	20" (508)	100/sec.	30" (762)	20" (508)	80" (2032)
H3701-30-34	30 ⁷ / ₈ (784.2)	34 ¹ / ₄ (870)	32 ¹ / ₄ (822.3)	33 ¹ / ₄ (844.6)	30" (762)	66.7/sec.	45" (1143)	30" (762)	80" (2032)
H3701-40-44	40 ⁷ / ₈ (1038.2)	44 ¹ / ₄ (1124) 4	2 ¹ / ₄ (1076.3)	43 ¹ / ₄ (1098.6)	40" (1016)	50/sec.	60" (1524)	40" (1016)	80" (2032)

Notes:

- Actual gap must be specified at time of order. All emitters are factory calibrated at the specified gap.
- The proper selection of emitter to receiver gap is crucial in optimizing performance. Larger gaps provide better insensitivity to passline change, such as edge flutter. Smaller gaps may be required if intense ambient light conditions exist; such as, strobe lights, high intensity fluorescent lights, sodium vapor lights, etc. Consult the factory when selecting a gap for critical applications.
- Strobe lights operating within 200 ft. of a DSS System require special consideration. Please consult factory.
- H3710-200-01 supersedes the H3710-100-01 with the incorporation of an automatic gain compensation feature, and a larger sensing area. Units can be directly interchanged to upgrade to H3710-200-01. When upgrading dual receiver systems, both receivers should be upgraded.



**NORTH, CENTRAL
AND SOUTH AMERICA**

Tel +1.405.755.1600
Fax +1.405.755.8425
sales@maxcessintl.com
www.maxcessintl.com

INDIA

Tel +91.22.27602633
Fax +91.22.27602634
india@maxcessintl.com
www.maxcess.in

**EUROPE, MIDDLE EAST
AND AFRICA**

Tel +49.6195.7002.0
Fax +49.6195.7002.933
sales@maxcess.eu
www.maxcess.eu

JAPAN

Tel +81.43.421.1622
Fax +81.43.421.2895
japan@maxcessintl.com
www.maxcess.jp

CHINA

Tel +86.756.881.9398
Fax +86.756.881.9393
info@maxcessintl.com.cn
www.maxcessintl.com.cn

**KOREA, TAIWAN
AND SE ASIA**

asia@maxcessintl.com
www.maxcessintl.asia