

ELECTROHYDRAULIC POWER UNITS

SPECIFICATIONS

MODEL & NUMBER OF SERVO VALVES	MOTOR RATING	RESERVOIR CAPACITY	HYDRAULIC PUMP	OPERATING PRESSURE	PRESSURE AT CYLINDER	CYLINDER THRUST AND SPEED RELATIONS								
						51/SECOND (2/SECOND)		38/SECOND (1.5/SECOND)		25/SECOND (1/SECOND)		15/SECOND (0.6/SECOND)		
						BORE	THRUST	BORE	THRUST	BORE	THRUST	BORE	THRUST	
						MM	N	MM	N	MM	N	MM	N	
HP	LITERS	L/MIN	BAR	PSI	BAR	PSI	INCH	LBF	INCH	LBF	INCH	LBF	INCH	LBF
E25-B1	0.19	6.6	3	20.7	13.8	N/A	N/A	38	1299	51	2095	N/A	N/A	
	0.25	7	0.8	300	200			1.5	292	2	471			
E50-B1	0.37	13.3	6.0	22.4	14.8	51	2251	N/A	N/A	64	3941	83	6512	
	0.5	14	1.6	325	215	2	506			2.5	886	3.25	1464	
E50-B2	0.37	13.3	6.0	22.4	14.8	N/A	N/A	38	1397	51	2251	64	3941	
	0.5	14	1.6	325	215			1.5	314	2	506	2.5	886	
E100-B1	0.75	18.9	8.7	36.2	24.1	N/A	N/A	64	6419	83	10605	102	15818	
	1	20	2.3	525	350			2.5	1443	3.25	2384	4	3556	
E300-B1	2.24	56.8	18.2	60.3	40.0	83	17570	102	26213	127	42570	152	60273	
	3	60	4.8	875	580	3.25	3950	4	5893	5	9570	6	13550	




NORTH, CENTRAL AND SOUTH AMERICA

Tel +1.405.755.1600
Fax +1.405.755.8425
sales@maxcessintl.com
www.maxcessintl.com

INDIA

Tel +91.22.27602633
Fax +91.22.27602634
india@maxcessintl.com
www.maxcess.in

EUROPE, MIDDLE EAST AND AFRICA

Tel +49.6195.7002.0
Fax +49.6195.7002.933
sales@maxcess.eu
www.maxcess.eu

JAPAN

Tel +81.43.421.1622
Fax +81.43.421.2895
japan@maxcessintl.com
www.maxcess.jp

CHINA

Tel +86.756.881.9398
Fax +86.756.881.9393
info@maxcessintl.com.cn
www.maxcessintl.com.cn

KOREA, TAIWAN AND SE ASIA

Tel +65.9620.3883
Fax +65.6235.4818
asia@maxcessintl.com

ELECTROHYDRAULIC POWER UNITS

MAXCESS®

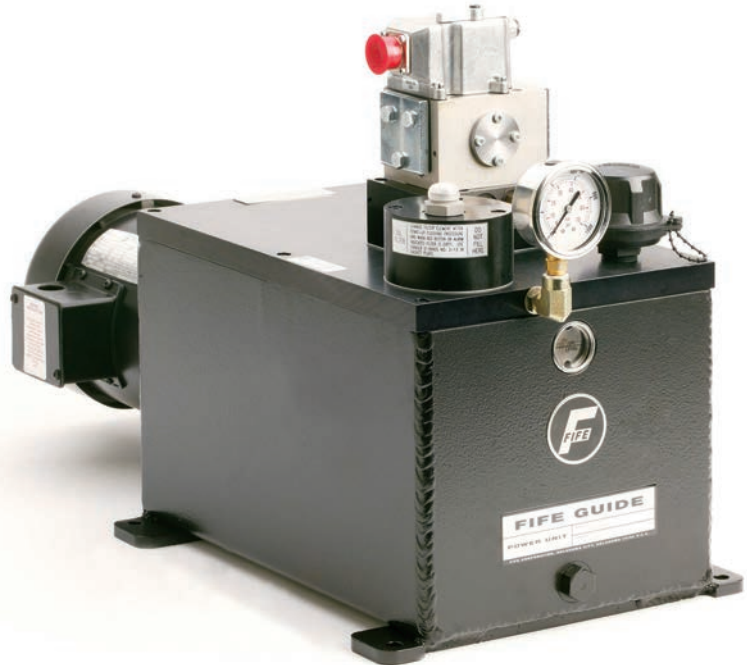
MAGPOWR



TIDLAND

Specifically designed for web guiding, Electrohydraulic Power Units are ideal for use with Fife's full line of electronic sensors and signal controllers. The power units incorporate a servovalve to provide precise proportional control regardless of material or load requirements.

Equipped with their own hydraulic reservoir, pump, filter, and relief valve, all standard models can be used for single, double, or triple guiding installations. By utilizing one or more servo valves, a single power unit simultaneously, yet independently, is capable of handling up to three separate guiding operations. For more than three, a combination of power units may be used.



GENERAL SPECIFICATIONS

Linearity

1.5% nominal maximum error

Plane Change

1.5% nominal maximum error

Temperature Drift

1% maximum error (SE-11-IT)
5° to 50° C (41° to 122° F)

Power Required

10 to 15 VDC at 30 mA

Output Signal

0 to 10 mA

Weight

140 grams (5 ounces)

Temperature Range

0° to 50° C (32° to 122° F)

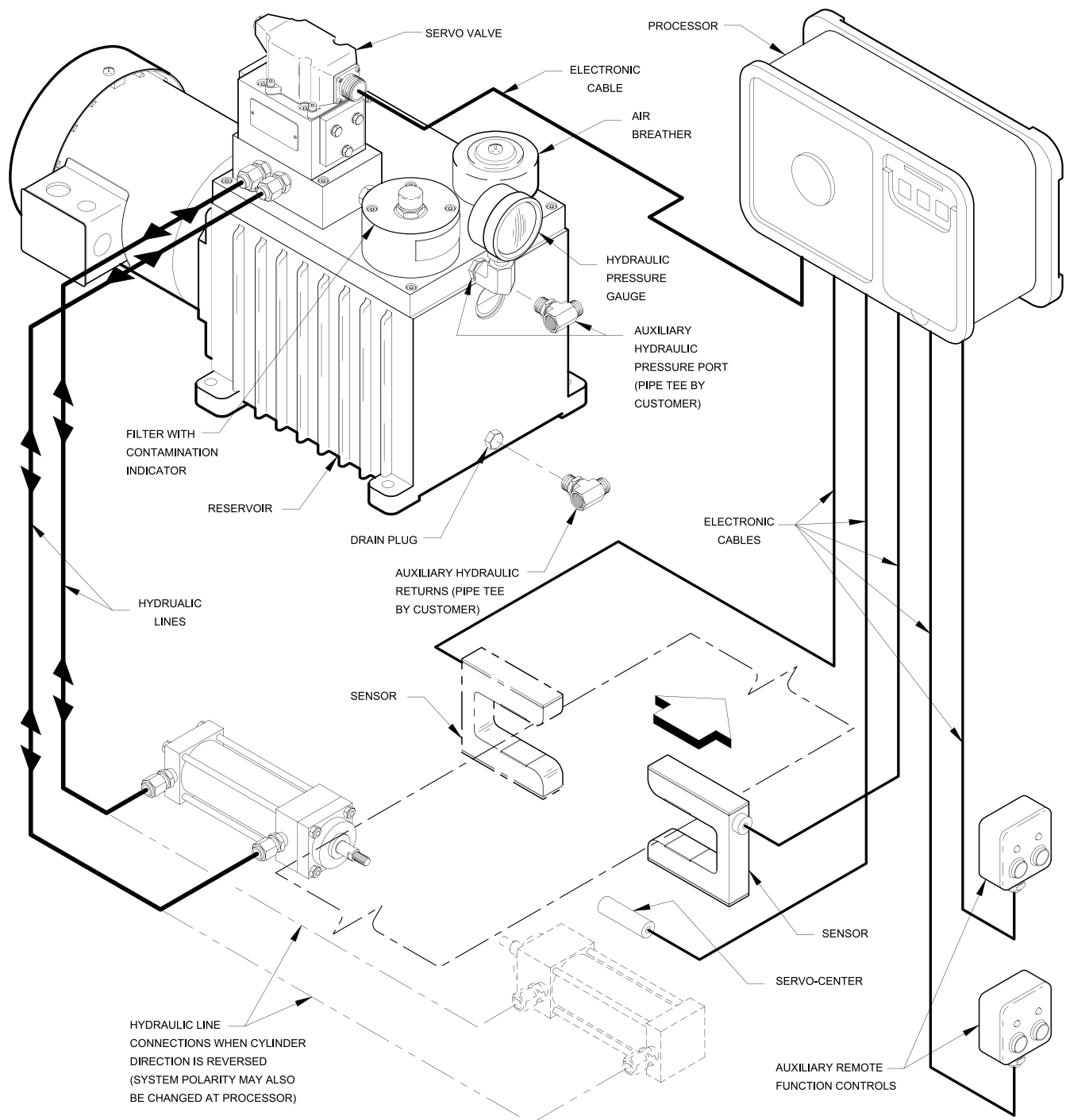
KEY FEATURES

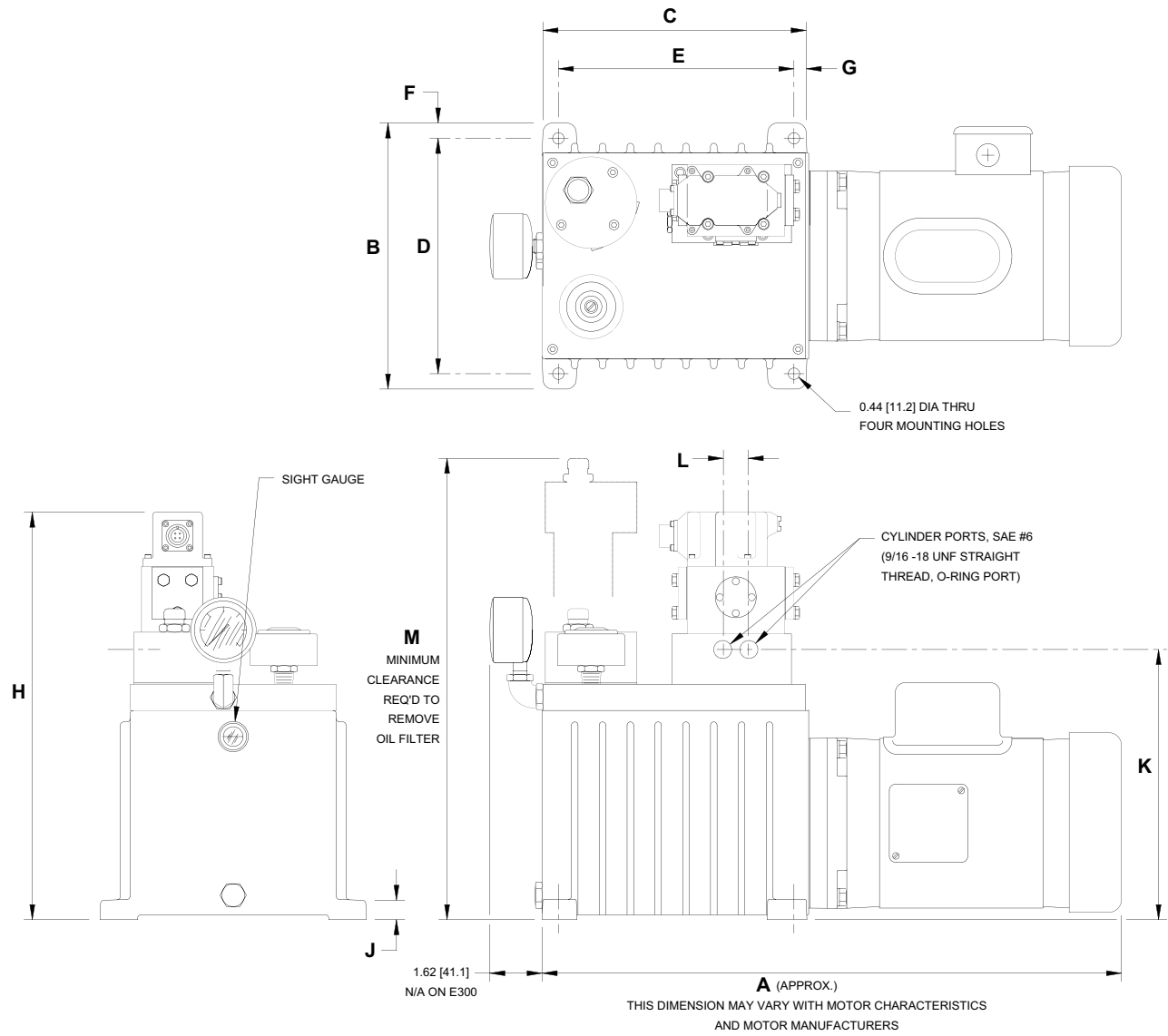
- Provides superior response and control for any web guiding application
- Exclusive spool-type servo valve for unexcelled sensitivity and stability
- For use with Fife electronic sensors and signal controllers
- Compact, modular construction minimizes exterior tubing and provides maximum ease of servicing
- Totally enclosed, or explosion proof motors are both available
- Additional hydraulic ports on all units for use with Fife equipment
- Units are furnished complete with hydraulic fittings and cables. Electrical cables are multiconductor shielded cables. They are encased in polyvinyl chloride to withstand acids, alkalis, oil, flame, moisture, solvents, and fungus

OPTIONS

- All Fife power units are available with Servo-Center, Manual-Automatic, and many other circuit system options.
- Remote controls are available, and may be incorporated into the customer's control panel.
- Optional alarm package—system will lock in place and send an alarm if the sensor does not detect the preset guide point within a selectable period of time.
- Systems can be configured to edge guide, line guide, or center guide. Dual sensor systems can edge guide from either edge or center guide. Center guides may be either fixed-sensor or moving-sensor systems.
- Floor or wall mounting brackets available.

TYPICAL SINGLE POWER UNIT INSTALLATION





MODEL & NUMBER OF SERVO VALVES	A	B	C	D	E	F	G	H	J	K	L	M	APPROX GROSS WEIGHT
	MM	MM	MM	MM	MM	MM	MM	MM	MM	MM	MM	MM	KG
	INCH	INCH	INCH	INCH	INCH	INCH	INCH	INCH	INCH	INCH	INCH	INCH	LBS
E25-B1	599	257	260	228	228	14	16	389	20	256	25	476	45
	23.58	10.1	10.24	9.0	9.0	0.56	0.63	15.31	0.78	10.06	1.0	18.75	100
E50-B1	715	318	374	286	348	16	13	415	19	281	25	502	73
	28.15	12.5	14.75	11.25	13.69	0.63	0.53	16.34	0.75	11.06	1.0	19.75	160
E50-B2	715	318	374	286	348	16	13	415	19	281	25	502	77
	28.15	12.5	14.75	11.25	13.69	0.63	0.53	16.34	0.75	11.06	1.0	19.75	170
E100-B1	864	318	515	286	483	16	17	415	19	281	25	502	82
	34.02	12.5	20.3	11.25	19.0	0.63	0.65	16.34	0.75	11.06	1.0	19.75	180
E300-B1	1011	483	661	445	536	19	21	532	13	398	25	728	181
	39.80	19.0	26.06	17.5	21.12	0.75	0.81	20.96	0.50	15.68	1.0	28.67	400