



FIFE CORPORATION

222 W. Memorial Road, Oklahoma City, OK 73126-0508
Post Office Box 26508, Oklahoma City, OK 73114-2317
Phone: 405.755.1600 / 800.639.3433 / Fax: 405.755.8425
www.fife.com / E-mail: fife@fife.com

INSTALLATION INSTRUCTIONS

SE-15 VISIBLE LIGHT SENSOR

SE-15 VISIBLE LIGHT SENSOR

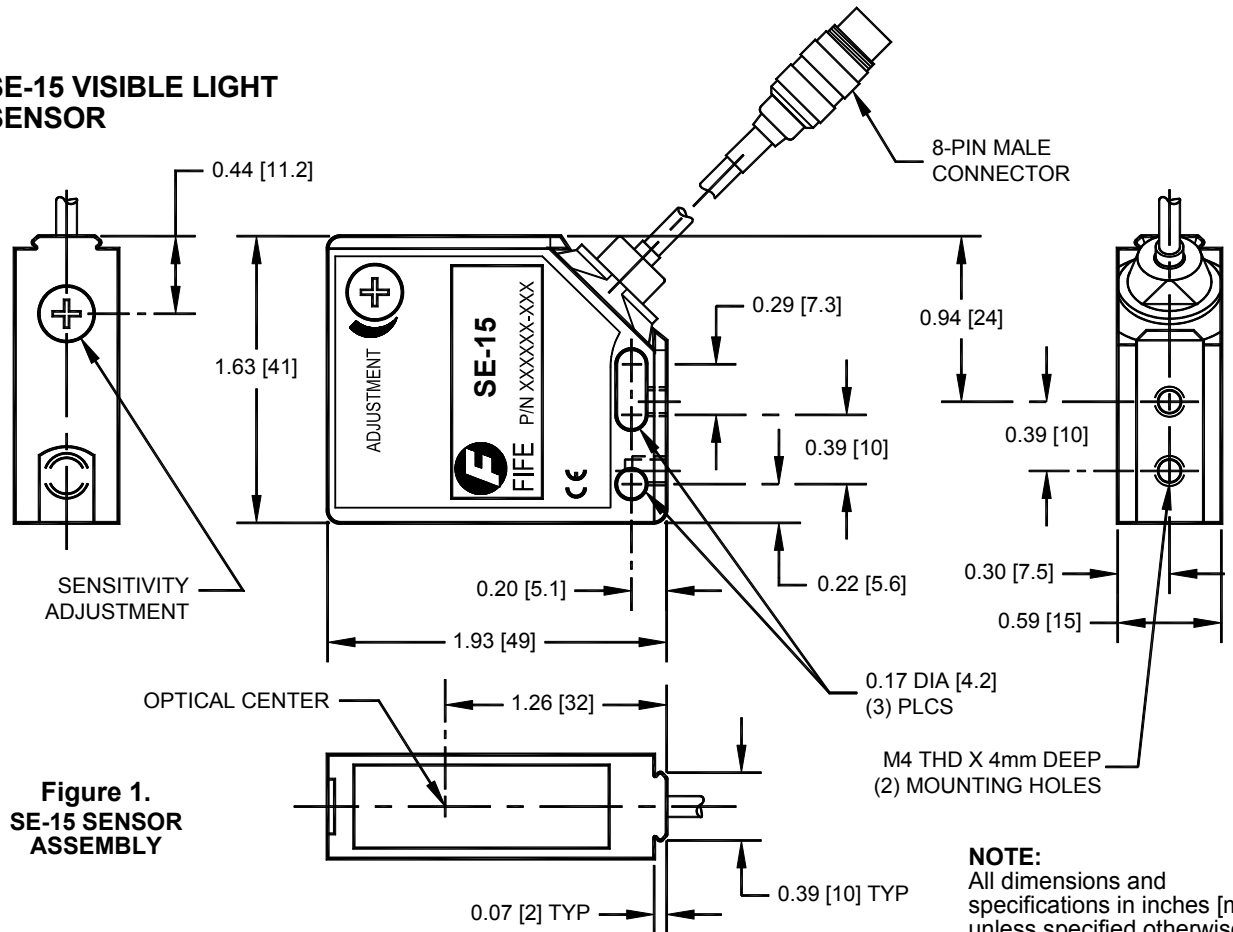


Figure 1.
SE-15 SENSOR
ASSEMBLY

NOTE:
All dimensions and
specifications in inches [mm]
unless specified otherwise.

Product Specifications

The very small Fife SE-15 visible light, medium gap reflex sensor is ideal for edge guiding where exact guiding is required and space is limited. The transmitted light that passes the strip edge is reflected back to SE-15 and then processed to determine the position of the strip or web edge.

Sensing Range	0 to 3.3 feet (0 to 1 meter)
Field of View	Approximately 0.3 to 0.8 inch (8 to 20mm) dependant on distance to material
Light Transmitter	LED, visible red light
Diameter of Light Spot	Approximately 1.2 inches (30mm) at a distance of 3.3 feet (1 meter)

Supply Voltage	12 VDC (10 to 14 VDC)
Supply Current	50mA maximum
Output Analog Current Signal	0 to 10mA
Approximate Weight (including cable)	7.5 ounces (213 grams)
Operating Ambient Temperature	0 to 60°C (32 to 140°F)
Storage Temperature	-25 to 75°C (-13 to 167°F)
Standard Cable Length	1.0 foot (0.3 meters)

Sensor Mounting

NOTE: Sensor adapters and mounting brackets shown on this page must be ordered separately.

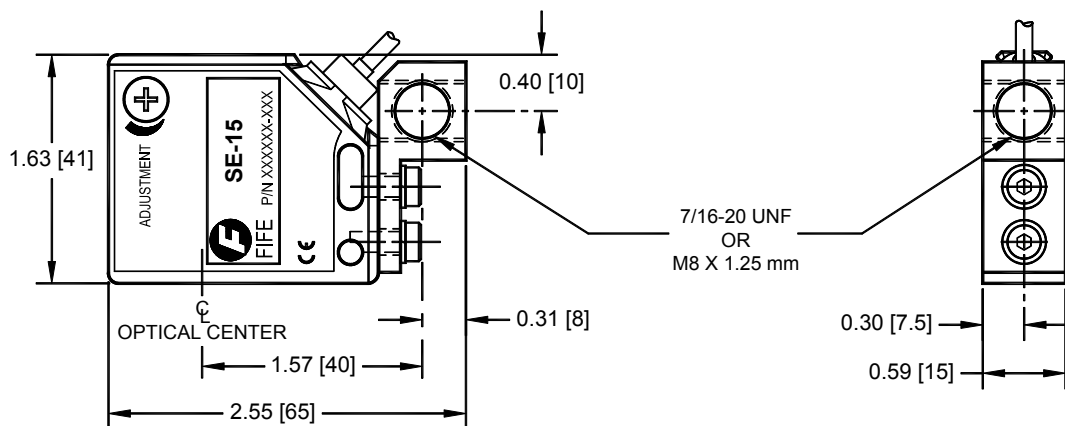


Figure 2.
SENSOR ADAPTOR
P/N 82233-001 (English) and 82233-002 (Metric) FOR USE WITH M-1935

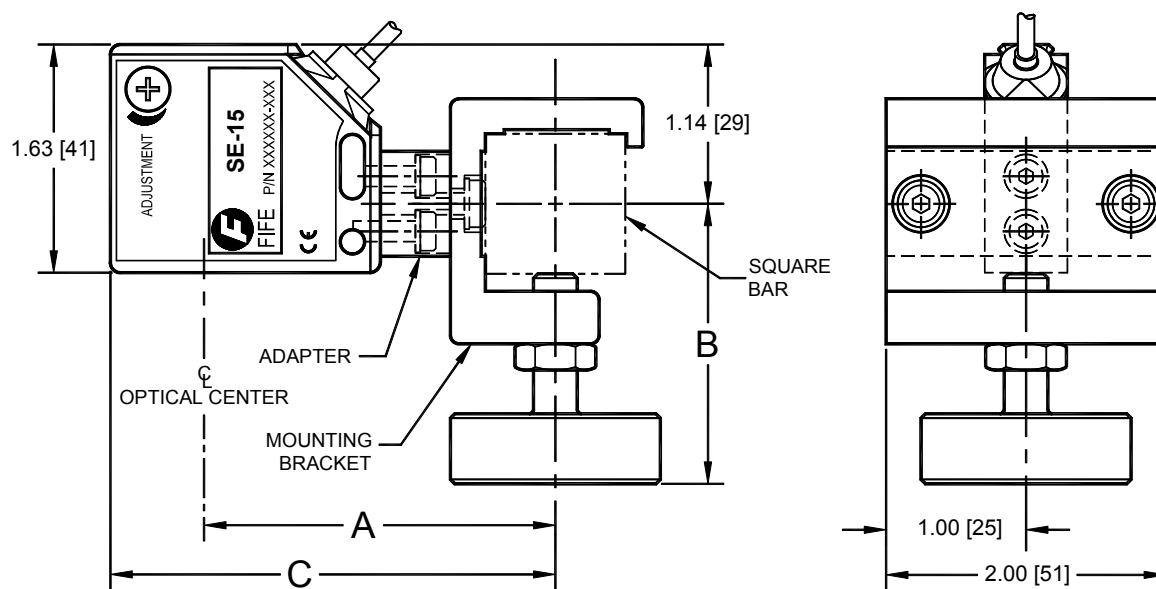


Figure 3.
SENSOR ADAPTOR
P/N 84123-001 FOR USE WITH M-18 OR M-17

MOUNTING BRACKET	SQUARE BAR SIZE	SQUARE BAR MAX LENGTH	A	B	C
M-17	0.75 [19]	60.00 [1524]	2.40 [61]	1.50 [38]	3.07 [78]
M-18	1.00 [25]	86.00 [2184]	2.51 [64]	2.00 [51]	3.18 [81]

SE-15 WITH M-17 OR M-18 MOUNTING BRACKET INSTALLATION DIMENSIONS