



Model Number

1-1350

Initiator tester

Features

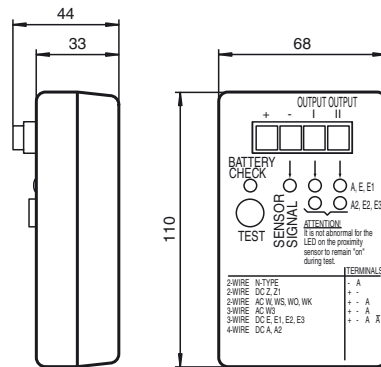
- 2-way LED indicator for switch status

Function

The proximity switch testing device 1-1350 is suitable for testing all DC initiators in 2, 3 and 4-wire technology (npn and pnp).

Either 0 V, 18 V or a sensor test signal are available via four connections on the front of the housing. The functional state and the battery state of the device can be tested and indicated via an LED via a push button.

Dimensions



Technical data

Electrical specifications

Operating voltage U_B 18 V, two 9 V block batteries included with delivery

Mechanical specifications

Connection 4 connection terminals
for 0 V, 18 V (pulsed, testoutput 1 and 2)

Dimensions 110 mm x 68 mm x 33 mm