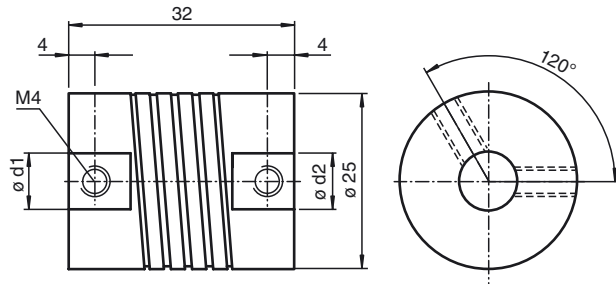




Dimensions



Model Number

KW-6/10

Helical coupling

Features

- Universally suitable for backlash-free rotation transmission
- Vibration- isolating
- Optimal misalignment compensation
- Medium torsion spring stiffness
- Small reset forces
- No moving parts, fabricated in one piece
- Suitable for vacuum

Technical data

Ambient conditions

Operating temperature	-30 ... 150 °C (-22 ... 302 °F)
-----------------------	---------------------------------

Mechanical specifications

Shaft diameter	d1 = 6 mm , d2 = 10 mm
Material	anodized aluminum
Mass	35 g
Rotational speed	max. 8000 min ⁻¹
Max. torque	1 Nm
Radial offset	max. ± 0.3 mm
Axial offset	max. ± 0.5 mm
Angle error	max. ± 4 °
Torsion spring stiffness	18 Nm / rad
Radial spring stiffness	50 N / mm
Moment of inertia	30 kg m ² x 10 ⁻⁷
Mounting	clamp screws M4 x 6, DIN 916
Tightening torque of clamping screws	max. 1.2 Nm